



**SAMRUDDH**  
VILLA

SITE : OPP. C.L. SCHOOL, AHMEDABAD - INDORE HIGHWAY,  
KATHWADA, AHMEDABAD.

DEVELOPERS

**SHREE AVAL DEVELOPERS**

MO : 7227861670

MO : 7227861692

ARCHITECT

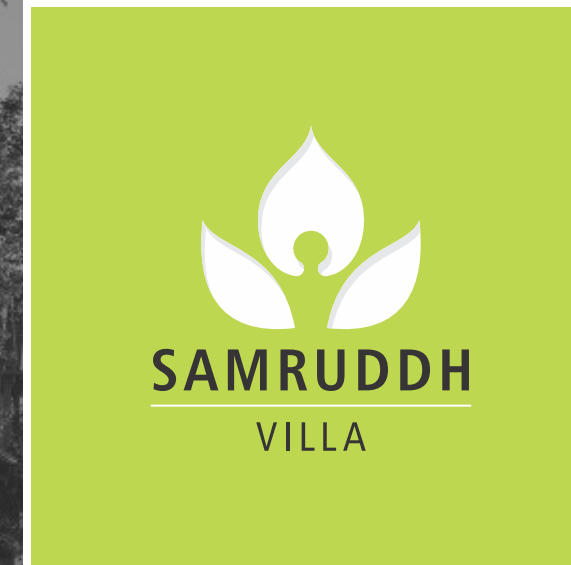
**SHAPERS 360**

ARCHITECTS & CONSULTANTS

MO : 90332 30888

STRUCTURAL ENGINEER

**SAMYOJAN**



FOR THE FINER THINGS IN LIFE  
ADD VALUE TO YOUR LIVING EXPERIENCE





Here, is where you can discover the best-in-class lifestyle you truly deserve. We welcomes you to its elegantly designed luxurious Bungalows. With a one-of-its-kind integrated model, Bungalows gives you a sophisticated living experience beyond all.

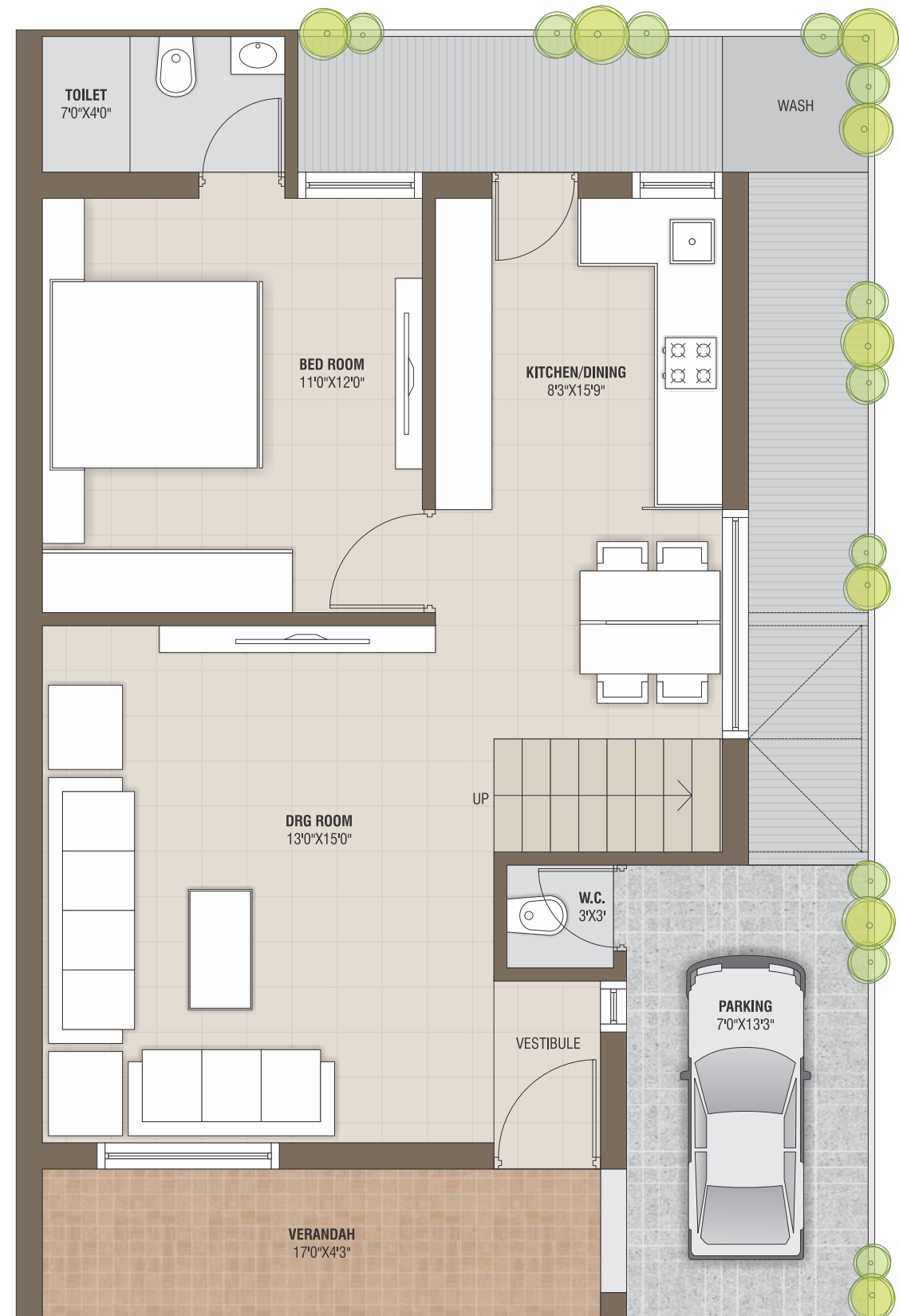




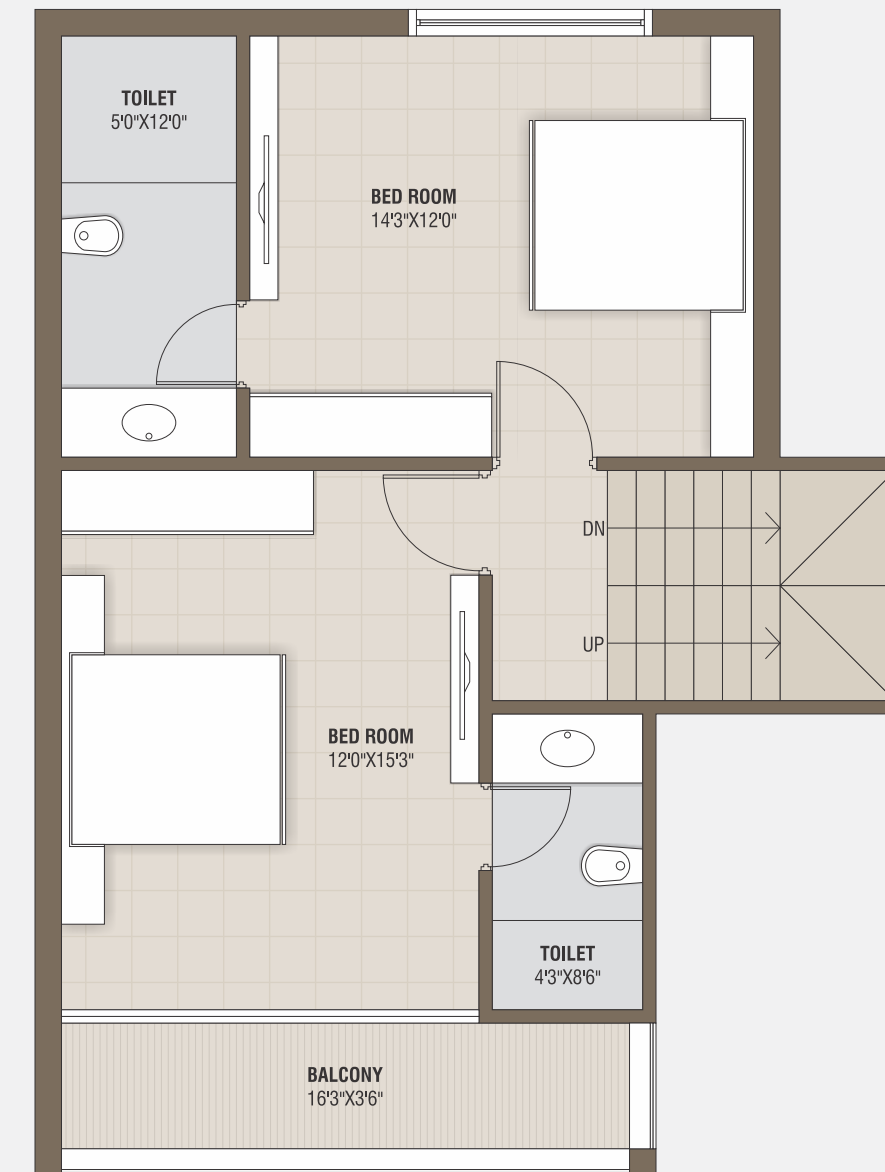
  
SAMRUDDH  
VILLA



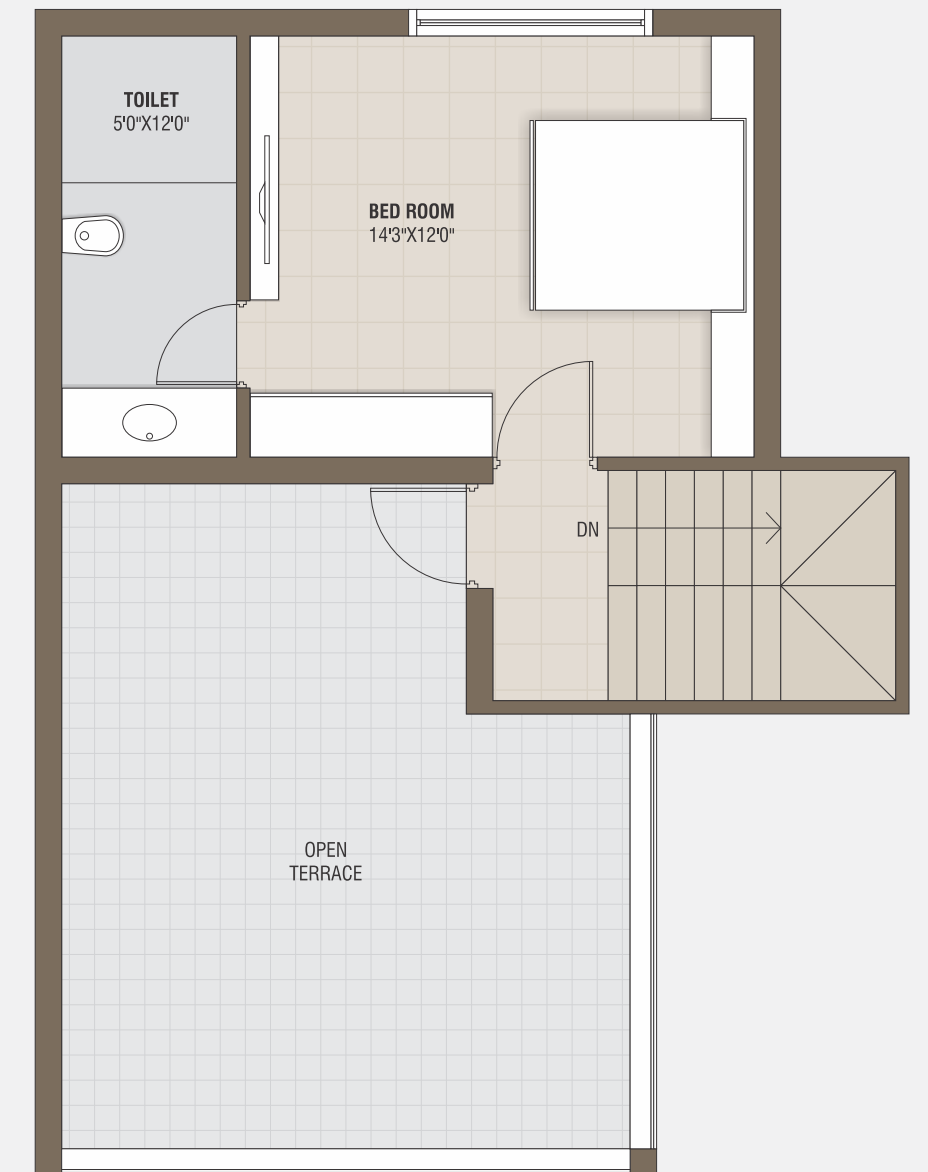
**GROUND | FLOOR PLAN**



**UNIT - 01 TO 08**

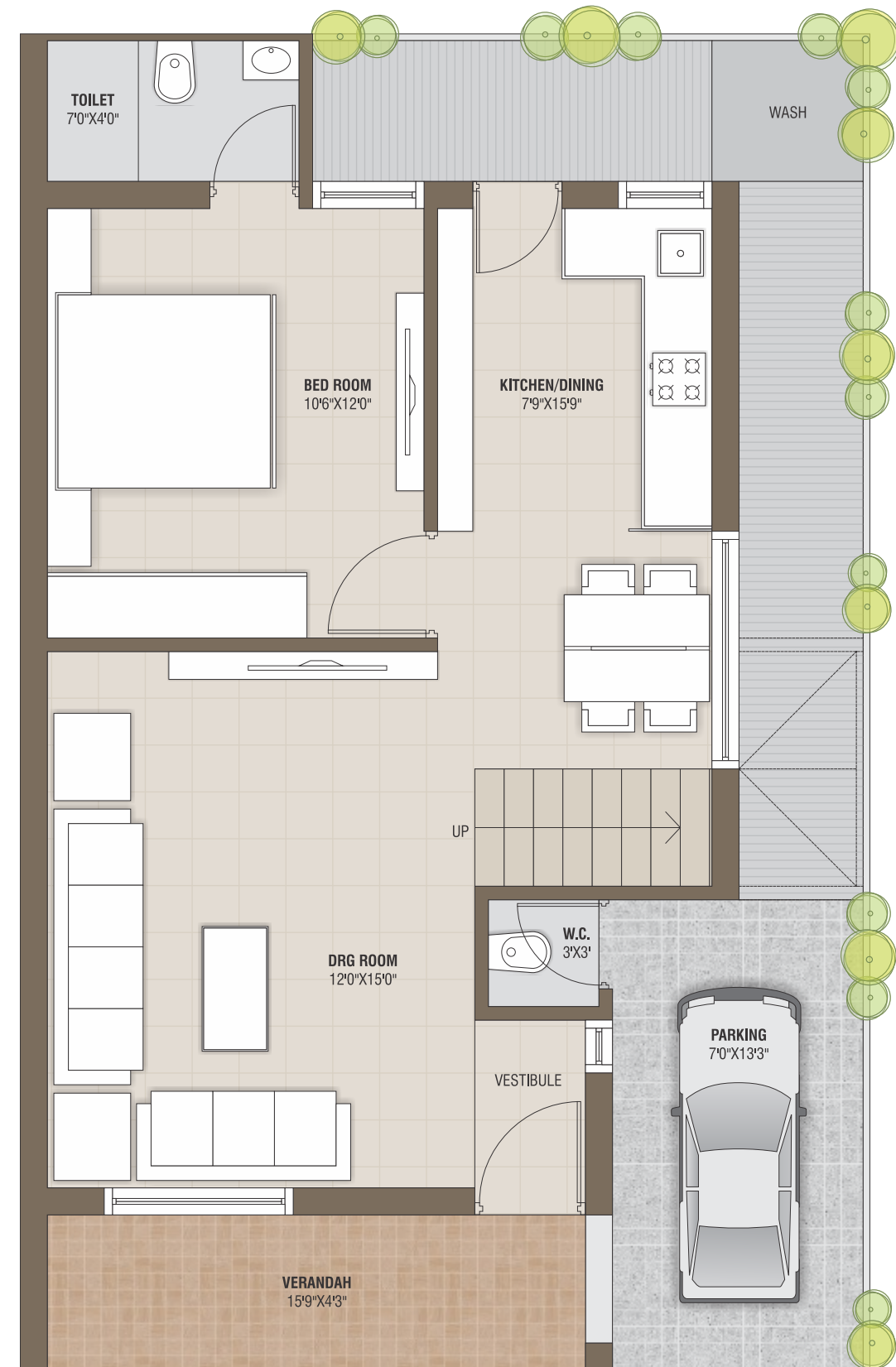


**FIRST | FLOOR PLAN**

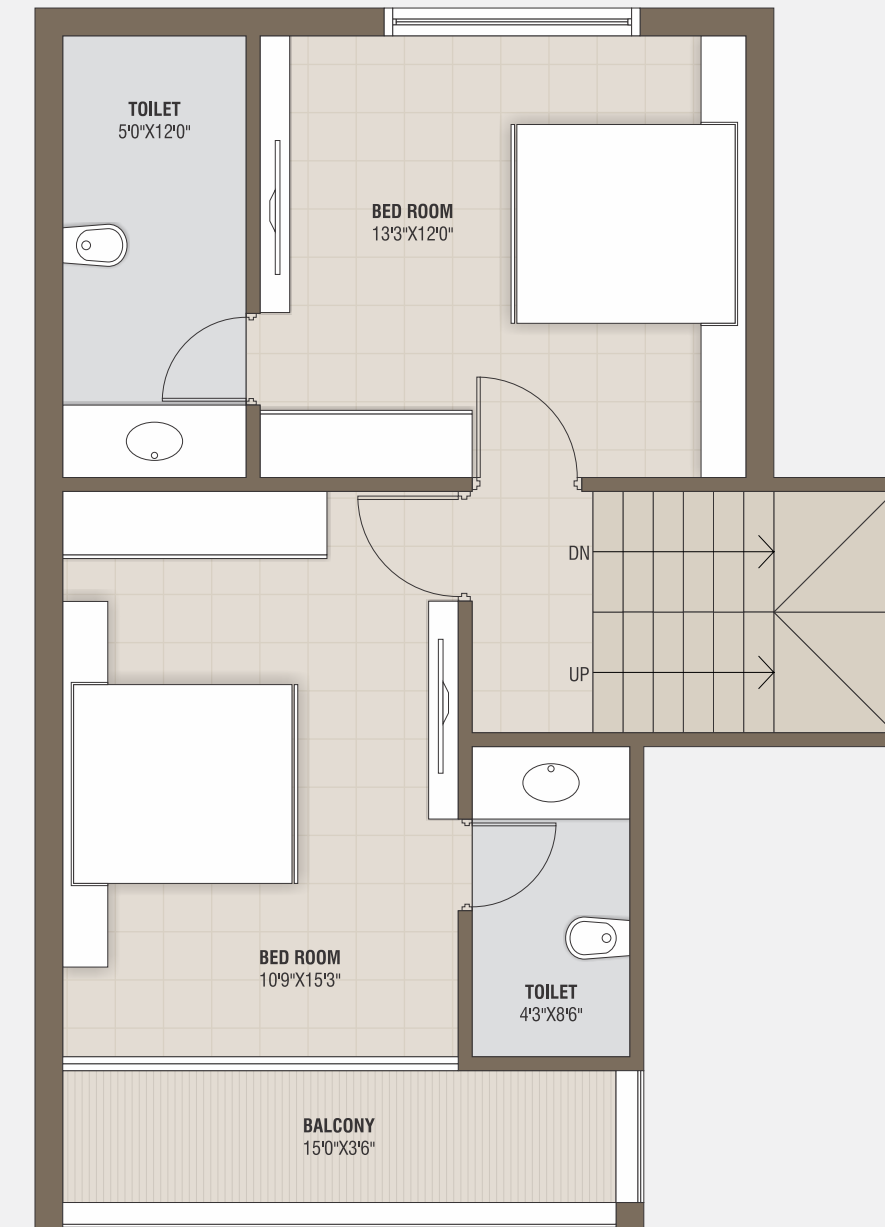


**SECOND | FLOOR PLAN**

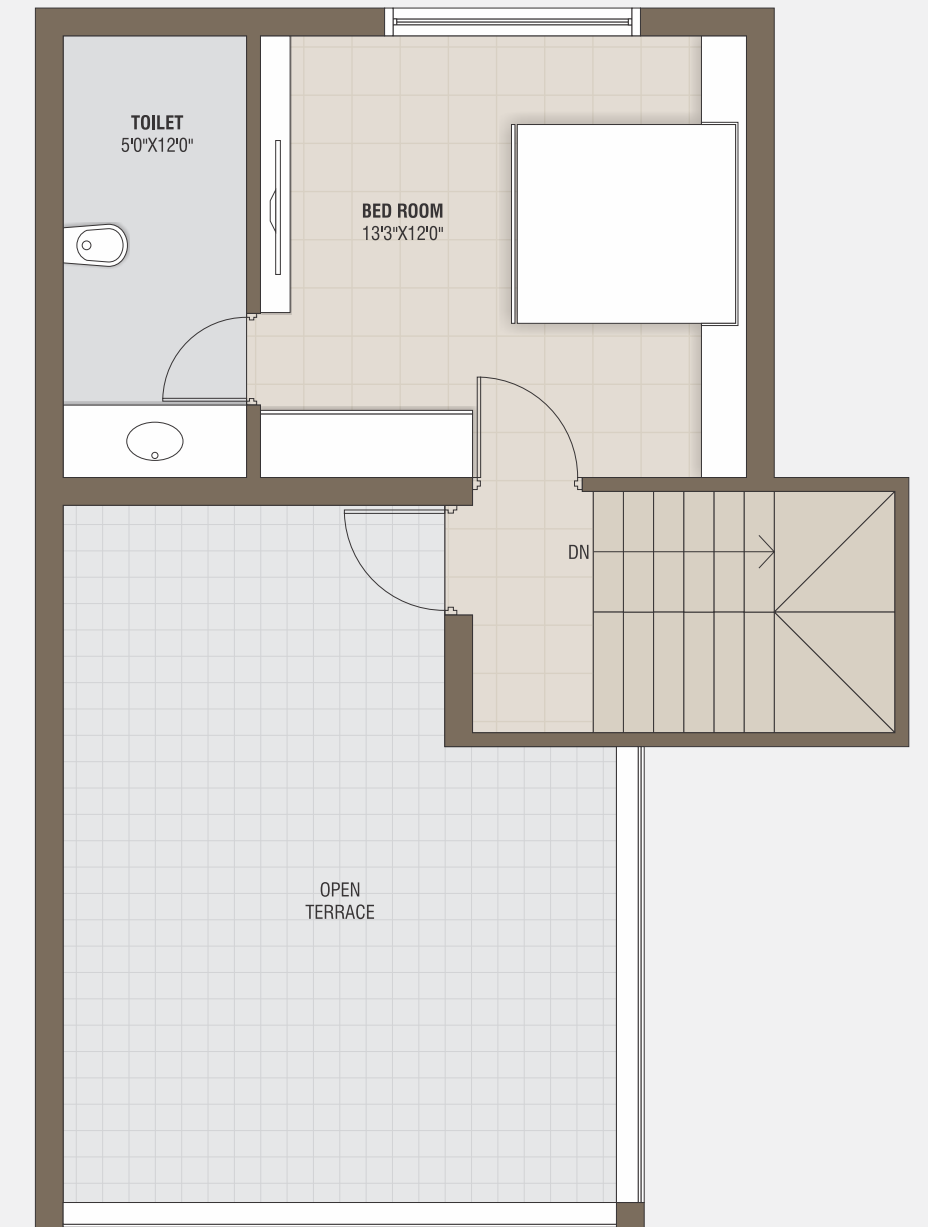
**GROUND | FLOOR PLAN**



**UNIT - 09 TO 29**



**FIRST | FLOOR PLAN**



**SECOND | FLOOR PLAN**

PROJECT AMENITIES



CLUB HOUSE



PARTY LAWN



SENIOR CITIZEN SITINGS



LANDSCAPE GARDEN



CHILDREN PLAY AREA



CC TV. MONITORED CAMPUS



INTERNAL RCC ROAD



24 HRS. WATER SUPPLY





## SPECIFICATIONS

### ELEVATION

As per Architect's design with superior finish.

### STRUCTURE

Earthquake resistant RCC framed structure with brick masonry wall.

### WALL FINISH

Internal : Single coat mala plaster with white Putty.  
External : Double coat Sand face plaster with Wether resistance Acrylic paint.

### FLOORING

Mirror polished Vitrified tiles flooring in entire Bungalows.

### KITCHEN

Premium quality Granite platform with S.S. Sink.  
Colour Glazed tiles dado up lintel level.

### BATHROOM, TOILET & PLUMBING

Colour Glazed tiles dado up lintel level in all bathrooms, Concealed plumbing with Good Quality Sanitary ware & C.P. Fittings.

### DOORS & WINDOWS

Decorative main door with Wooden frame. All other doors are Flush door. Anodized aluminum sliding windows of Standard quality with Safety grill.

### ELECTRIFICATION

Single phase concealed copper wiring with Modular switches & Sufficient electric points.



Notes : ■ Stamp duty, Registration charges, Legal documentation charges, GST, Meter charges, Society maintenance deposit shall be borne by the purchaser separately. ■ Any additional charges or duties levied by the Govt. / local authorities during or after the completion of the project will be borne by the member. ■ In the interest of continuous development in design & quality of construction, the developers reserves all the rights to make any changes in the project including Specification, Design, Layout & Elevation. ■ Purchasers are strictly not permitted to make any changes, alterations in the elevation, Exterior colour scheme of the complex or any changes affecting the overall design, Concept & outlook of the entire building during or after the completion of the project. ■ This brochure is intended only to convey the essential design and technical features of scheme and dose not form part of legal document. ■ All rendering, Floor plans, Pictures & Maps are artist's conception & not actual depiction of building.

