



3 B H K L U X U R Y L I V I N G

Just start exploring...  
and feel the epitome of **unmatchable luxury**



Playful is the way to  
A happy life



# SHILAJ HOMES

Living **Space Design**  
for **Elite**

## Amenities



LANDSCAPE GARDEN



SENIOR CITIZEN SITTINGS



24 HRS. SECURITY



INTERNAL PAVED AREA



GOOD QUALITY LIFT



24 HRS. WATER



ADEQUATE PARKING

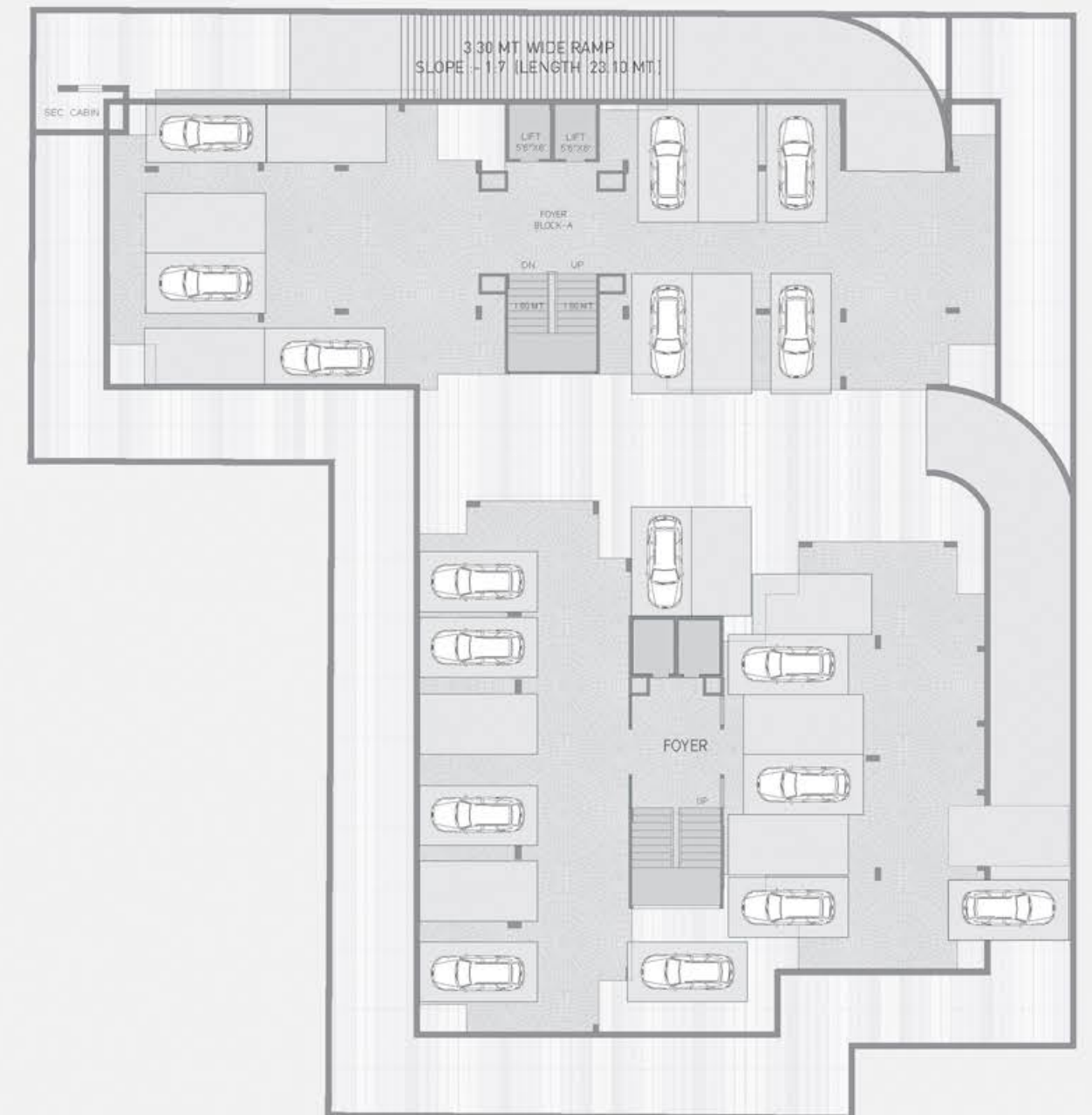




# LAYOUT PLAN



# BASEMENT PLAN



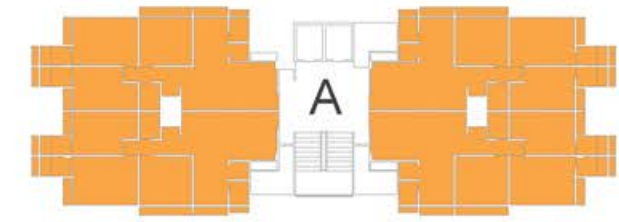


—z TYPICAL PLAN



UNIT - 1

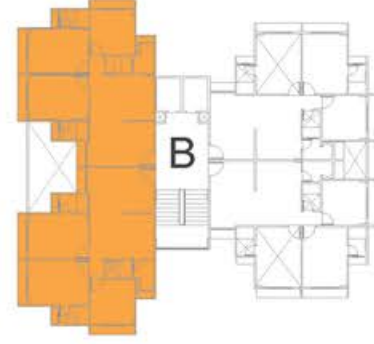
3BHK





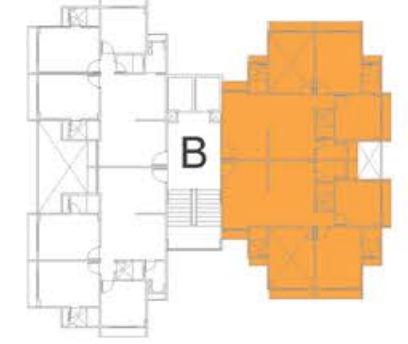
# UNIT - 2

## 3BHK



# UNIT - 3

## 3BHK





**SH** Exhilarating  
The Elevation That Thrills

## Specifications

### Structure

- Earthquake resistance structure.

### Flooring

- 600mm x 600mm Vitrified tiles of standard make in all areas of each flat and common passage

### Internal & External finishes:

- External wall with weather shield colour of standard make Internal wall with standard make putty in all plastered wall and ceiling

### Kitchen / Store area:

- Granite Platform with stainless steel sink and kitchen tile dedo up to lintel level

### Doors

- Attractive main door using laminated sheet with Wooden frame

### Windows

- Anodised aluminium frames and windows with stone revil.
- M S Grill for windows.

### Bathroom

- Designer glazed tiles up to beam level on wall.
- Anti-skid designer tile on floor.
- Branded sanitary wares.
- Premium quality C.P fittings.
- Point for exhaust fan and geyser

### Electrification & Back-up

- Sufficient points in concealed wiring and modular switches of standard make.
- T.V., Telephone & AC point in all rooms
- Backup generator provided for common services.

### Water Tank

- Underground and Overhead water tank with adequate storage capacity
- Rainwater harvesting System

### Terrace

- Special Water Proofing treatment with china chips flooring on top floor

### Plumbing

- Suspended and open plumbing

## Amenities

- 24x7 security system with CCTV cameras in common areas.
- 2 lifts in each block with one stretcher lift.
- 1 car and 2 two wheeler allotted parking.
- Power back-up system for common services.
- Water softening plant.

## Keyplan



### DEVELOPERS

**SAMSARJAN DEVELOPERS**  
079-400550113

### ARCHITECT

**ra**  
Ripal Asim Architects  
+91 9825412074

### STRUCTURE

**सम सजन**  
SAMSARJAN  
+91 78 26440113

RERA NO:

**SITE ADDRESS:** Shilaj Homes, Behind Kaveri Pratham Near Divya Jyot School Off S.P. Ring Road. Shilaj, Ahmedabad, Gujarat 380059

**Disclaimer:** The Brochure is for imaginative purpose and is not a legal document or a binding one. Subject to Ahmedabad Jurisdiction. All design, specifications and information shown herein proposed are subject to respective statutory approvals and legal compliance. Project Applied in RERA