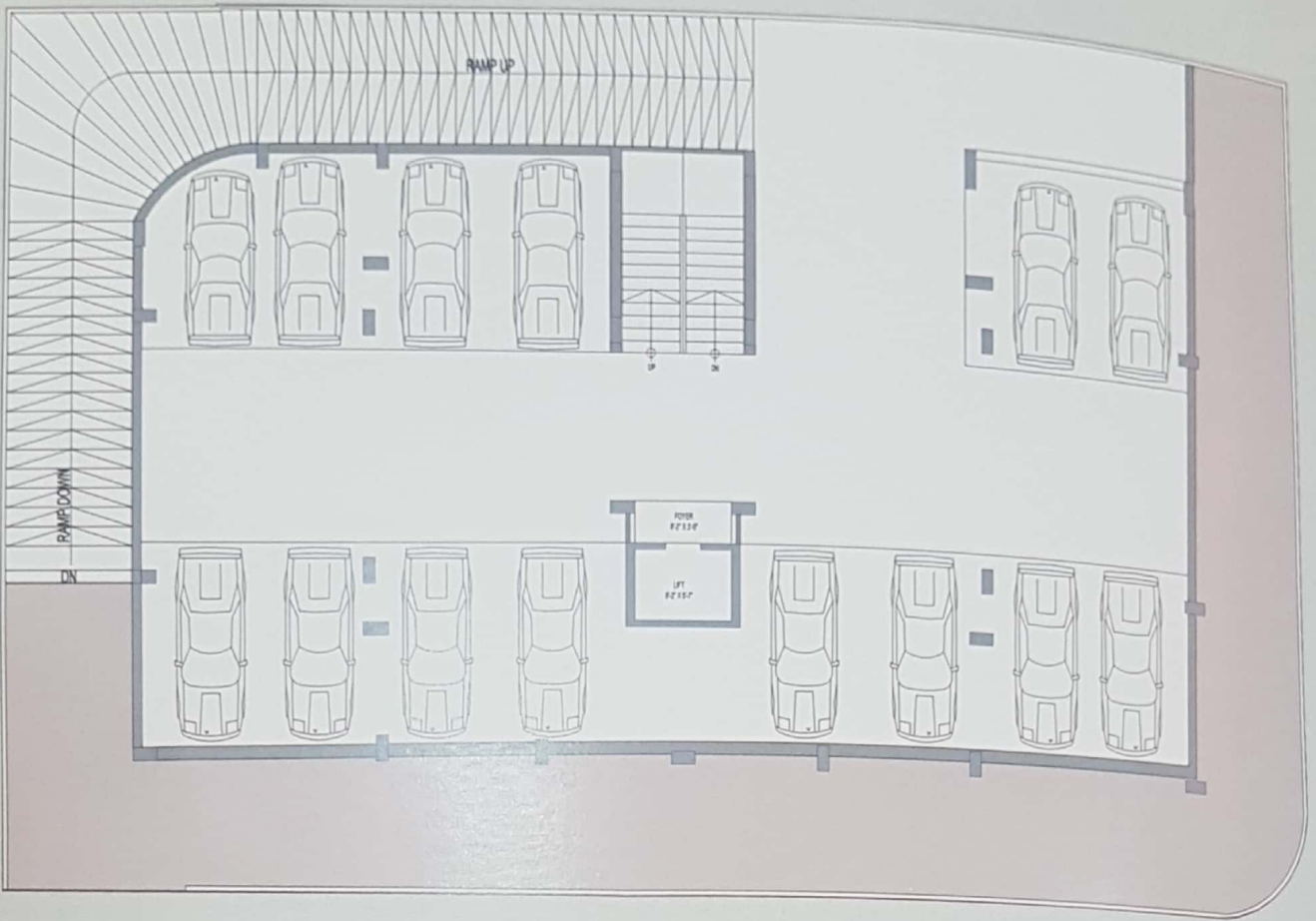


Swayam

Residency



3 BHK Luxurious Apartments



Hollow Plinth Plan



Typical Floor Plan



6.00 MT WIDE ROAD

12.00 MT WIDE ROAD

Swayam Residency

3 BHK Luxurious Apartments

Amenities:

- Four unit on each floor
- High quality automatic gearless elevator of reputed brand
- One car parking for each unit and ample free parking for two wheeler on ground floor
- Common bore well with submersible pump set for sufficient water supply
- Underground and overhead water tank with automatic water supply system
- Professionally done anti termite treatment

Technical Specifications:

- **Structure** : Earth Quake Resistant RCC Frame Structure.
- **Plaster** : Internal smooth single coat mala finish plaster with cement base putty and external double coat sand face plaster/Texture Finish with acrylic water proof paint.
- **Flooring**: Vitrified tiles in all rooms.
- **Kitchen**: Granite sandwich platform and designer tiles upto lintel level with S. S. sink.
- **Door**: Decorative main door with teakwood frame & other door having flush door with wooden frame and high quality fitting.
- **Window**: Aluminum Anodized sliding windows with granite frame.
- **Toilet & Plumbing**: CPVC / UPVC plumbing pipes and fitting with designer ceramic tiles dado up to lintel level with Branded C.P. fittings and sanitary ware. Designer wash basin in dining area.
- **Electrification**: 3 phase concealed ISI copper wiring and branded modular switches with adequate number of points in all rooms. AC Points in all three bedrooms and geyser Points in all toilets. ELCB / MCB Distribution board to ensure Maximum Safety.
- **Terrace**: Brick bat cement concrete for thermal insulation and china mosaic flooring for water proofing.



Site Address:

Swayam Residency, Near Agarwal Sweet House,
Opp. SRAG Sports Academy, Gurukul, Ahmedabad.

Developer:
Space Developer