

Satyaa | III

2 & 3 BHK EXCLUSIVE APARTMENTS







GROUND FLOOR PLAN



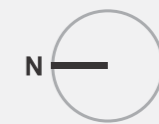
FIRST FLOOR PLAN



15.00 MTS. WIDE T.P.S ROAD

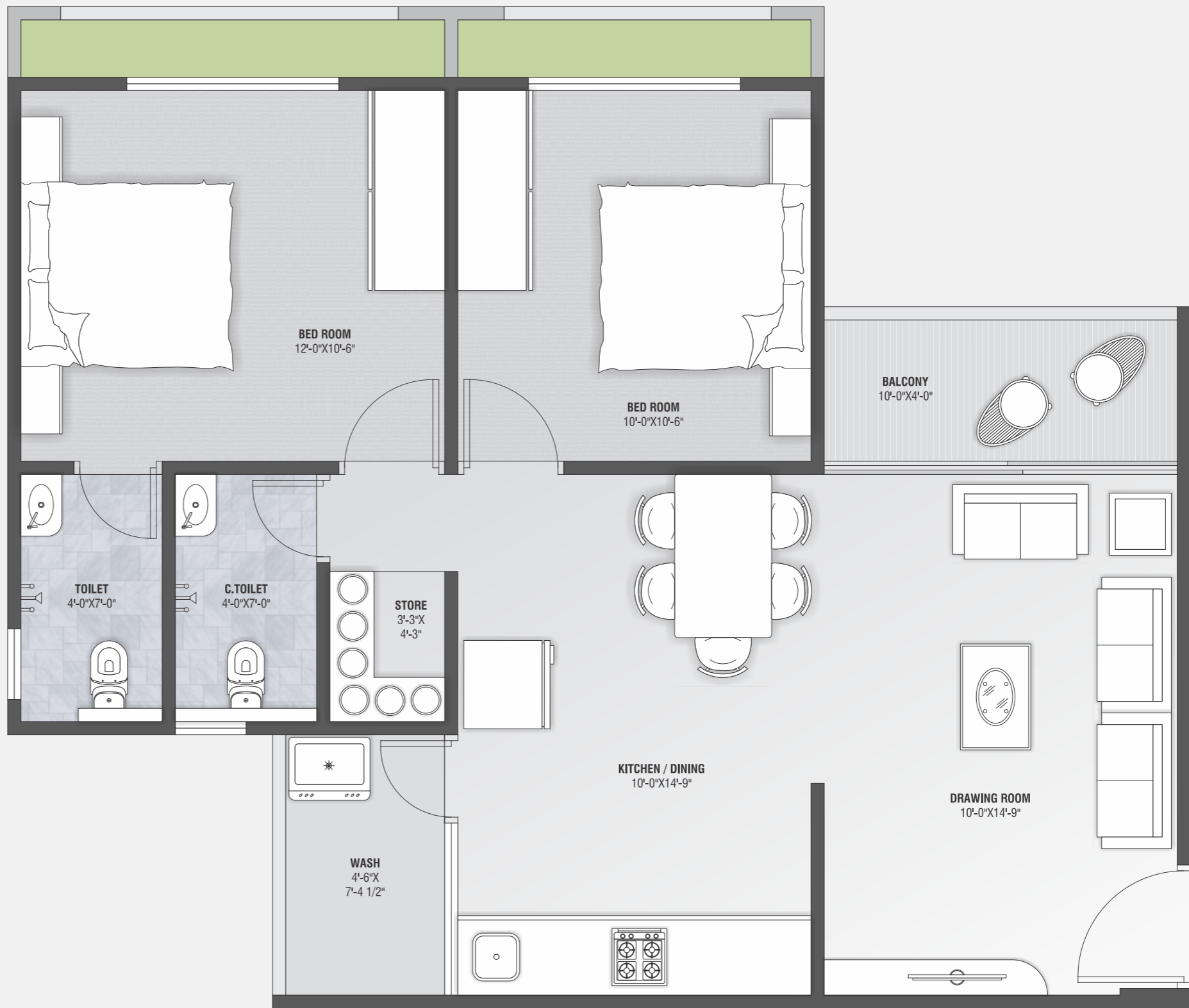


TYPICAL FLOOR PLAN



BLOCK - A





BLOCK - B



Specifications

Structure

Earthquake resistant, R.C.C. frame structure as per new by laws.

Flooring

Good quality Vitrified tiles in entire apartment.

Wall Finish

Internal mala plaster with white finish putty.
External double coat sand faced plaster with acrylic paints.

Electrification

Concealed copper wiring with adequate electric points. ELCB & MCB provision for maximum safety. Premium quality modular switches & accessories in each apartment.

Kitchen

Mirror polished granite platform with S.S. sink. Glazed tiles dado up to lintel level.

Doors & Window

Decorative wooden main entrance door.
All other doors of wooden framed with flushed doors. Fully glazed powder coated aluminum windows.

Toilets

Glazed tiles of leading brand in floor & dado up to lintel level. C.P. fittings of leading brand.



amenities



Landscaped Garden



Indoor Games



Gymnasium



Video door phone



Good Quality Elevator



Allotted car parking

Notes :

- All rights are reserved to Developer for any changes in plan & specifications.
- Irregular payment shall cause cancellation of booking.
- In case of cancellation of unit 10% of payment received will be deducted as a management services charges and balance amount will be returned only after the resell of the unit.
- Electricity, AMC, Stamp duty, Legal charges, GST, Registration fees & Other Tax will be levied extra.
- Detail & dimensions in model and brochure are indicative & for the tentative representation only which should not be treated as legal documents.
- Any additional charges or duties levied by the Govt / Local authorities during or after the completion of the scheme will be borne by the purchaser.
- Subject to Ahmedabad Jurisdiction.



Site : Opp. Sanidhya Royal, Bh. Sarthi Bungalows, Tragad Road, Tragad, Ahmedabad.

Developer

Sankalp Elit

8469 22 33 44

Architect

M.S. Associates

Structural Engineer

Shreeji Structural



RERA - PROJECT REGISTRATION NUMBER :
PR / GJ / AHMEDABAD / AHMEDABAD CITY /
Website : www.gujrera.gujarat.gov.in