



# AATMIYA SELENITE VILLA



**AATMIYA SELENITE VILLA**

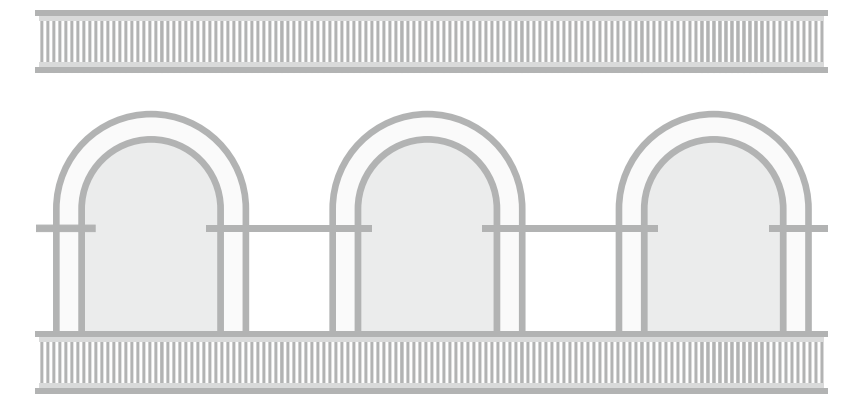
B/h Labh Icon, Nr Bansal Mall, Nilamber Circle, GERI Compound Road, Gotri, Vadodara, 390 021.

M: +91 6355 848 939 | E: Aatmiaselenite@gmail.com | W: www.aatmiyagroup.com

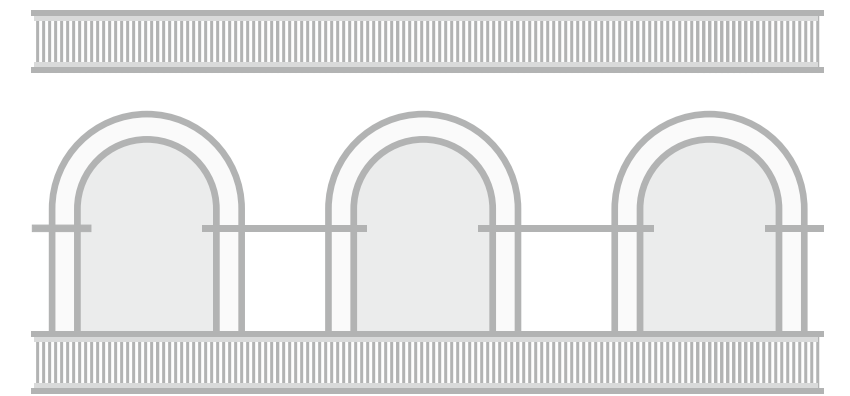
**MODE OF PAYMENT**

• 10% - at time of booking • 20% - Time of Agreement • 20% - Plinth Level • 20% - Ground Floor Slab Level • 20% - Second Floor Slab Level • 5% - Plaster Level • 5% Time of Possession

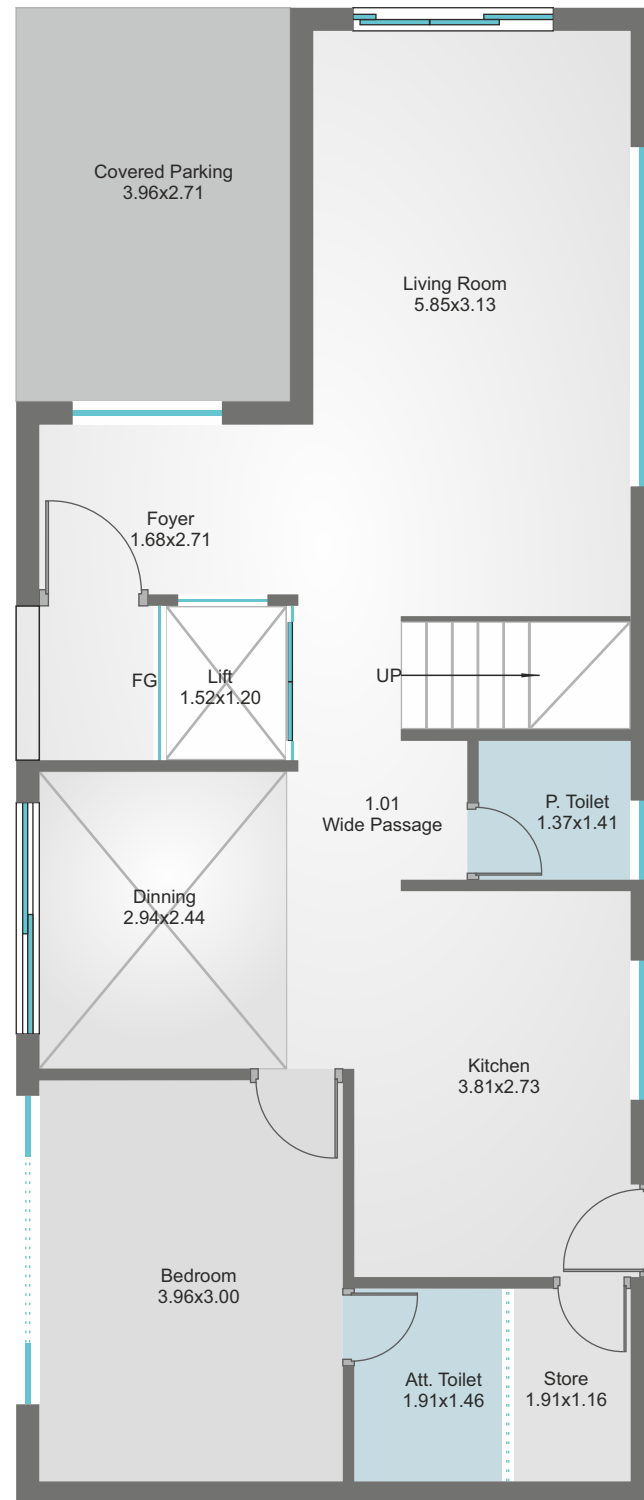
ZURICH 86254793 | 3D Visualization by LUCID - The Artistry



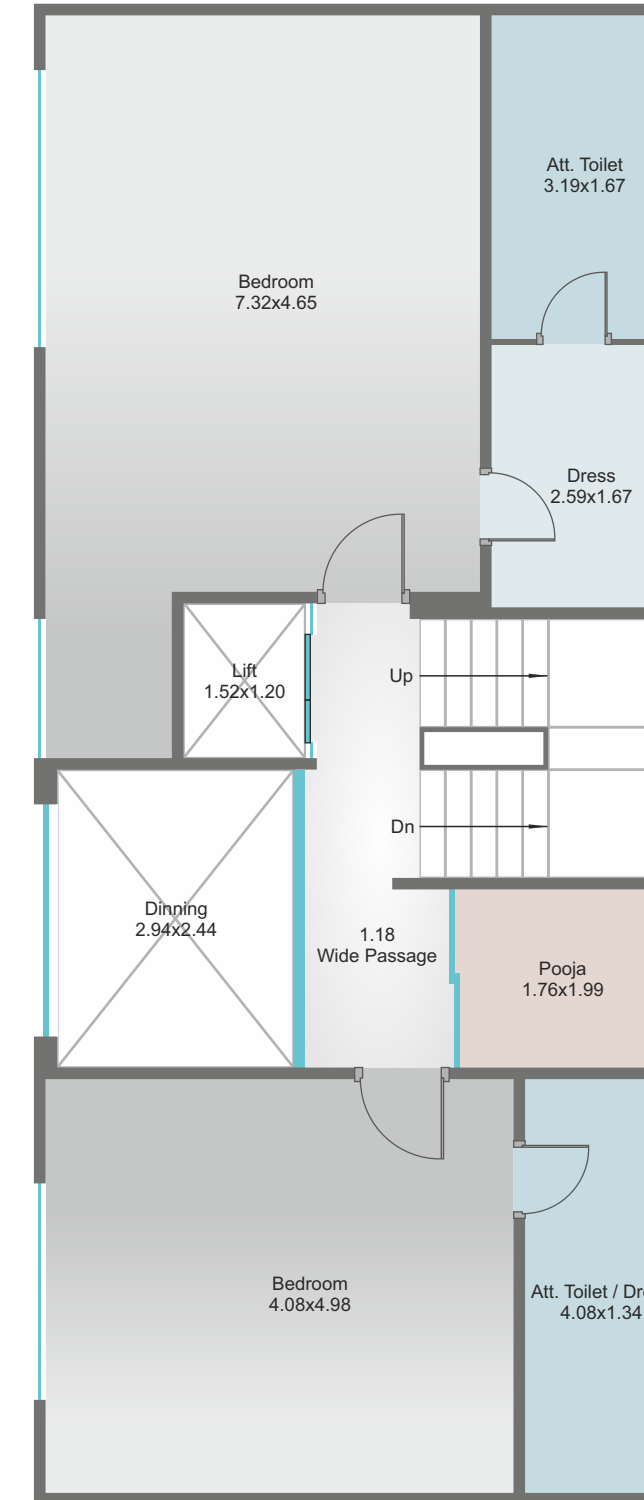
Layout Plan



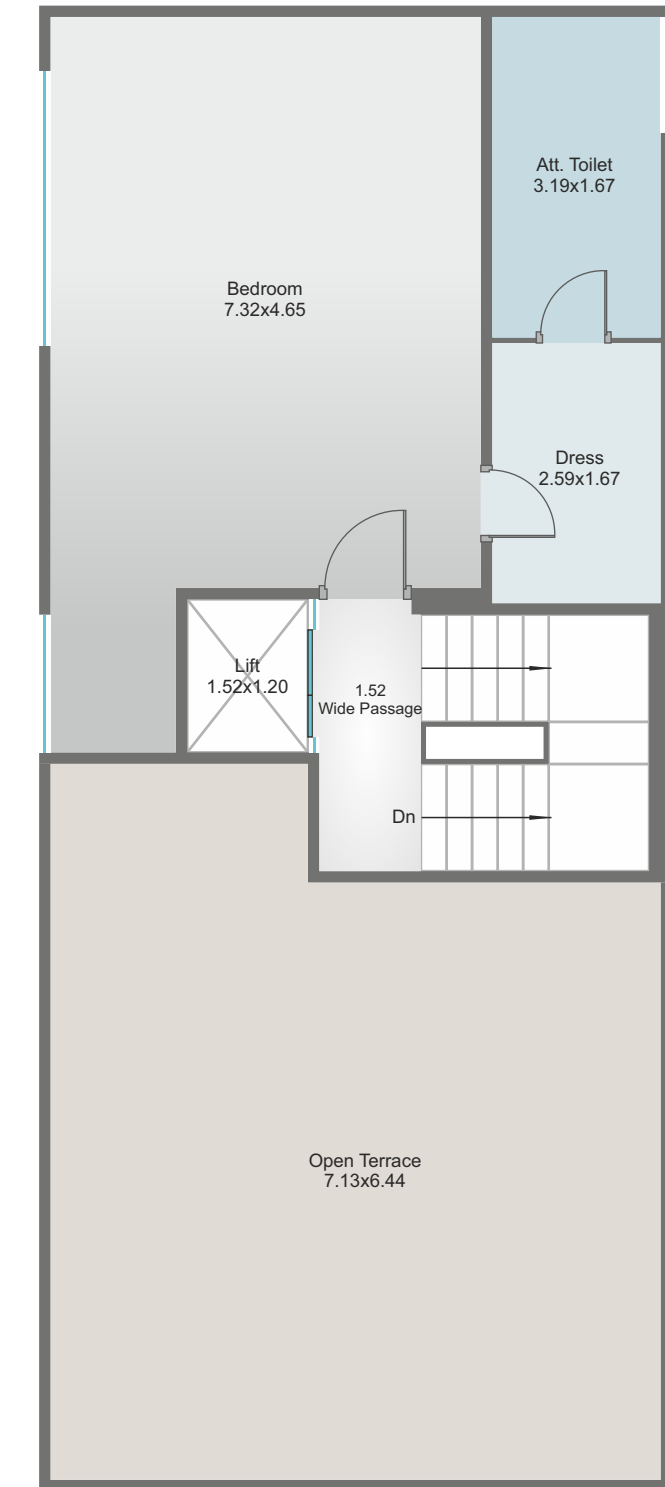
Ground Floor Plan (Plot-1)



First Floor Plan (Plot-1)



Second Floor Plan (Plot-1)





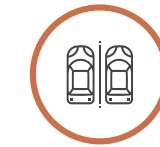
## AMENITIES



Terrace Garden



Outdoor Café



Allotted Car Parking  
with Visitors Parking



Intercom  
Facility

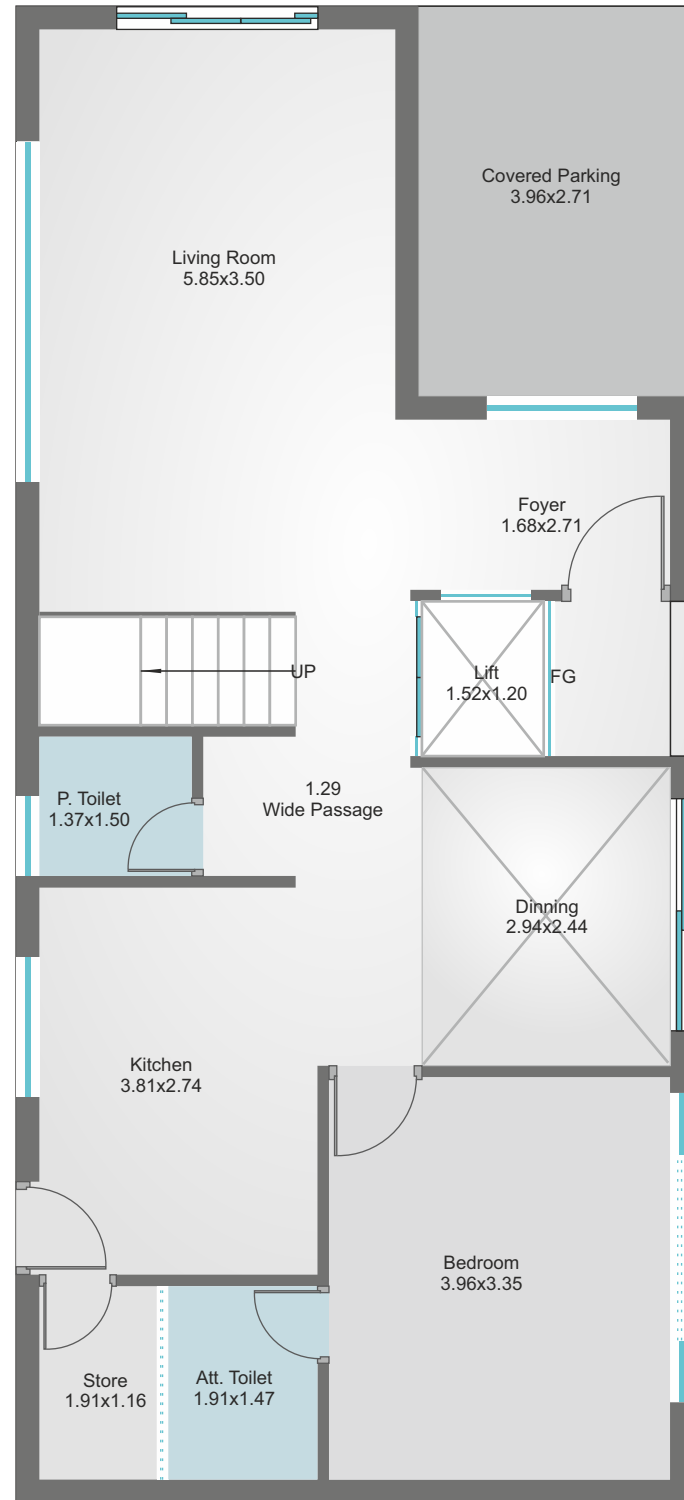


EV Charging  
Point

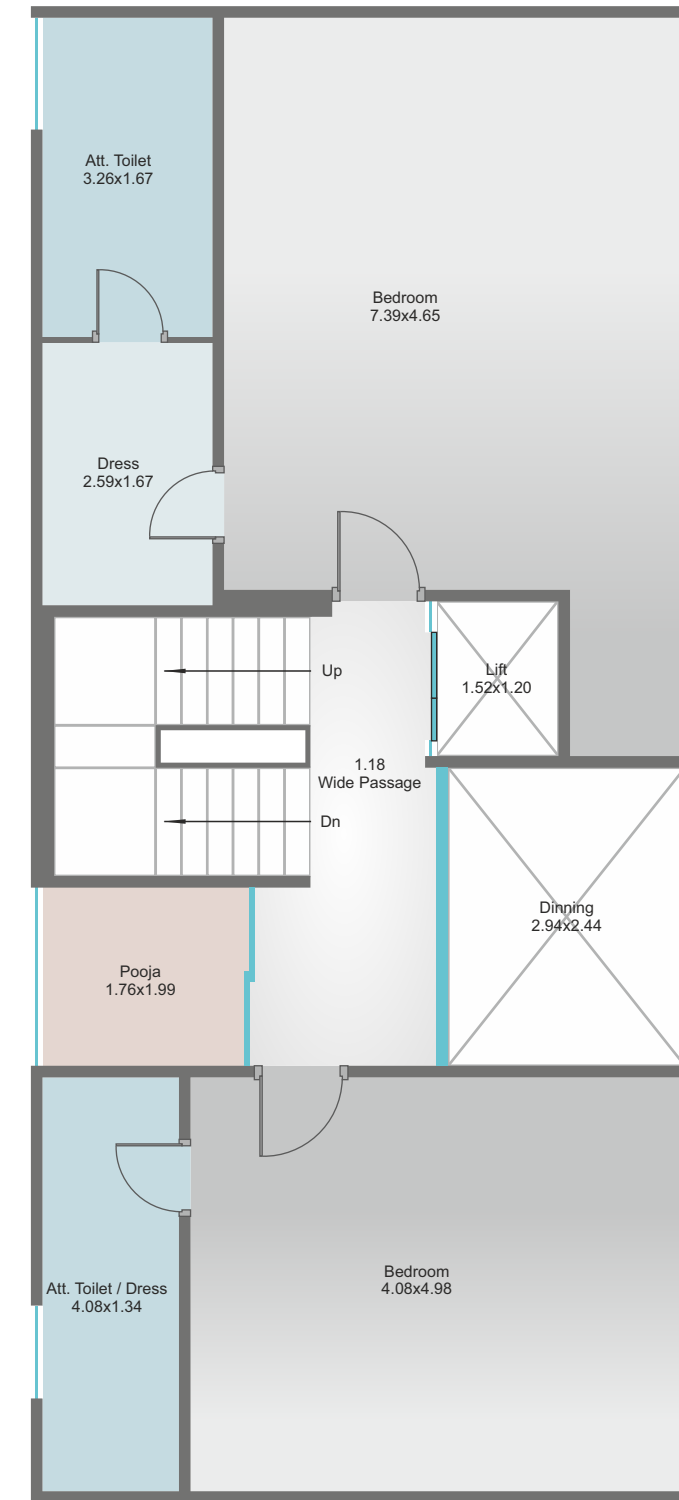


Power Backup

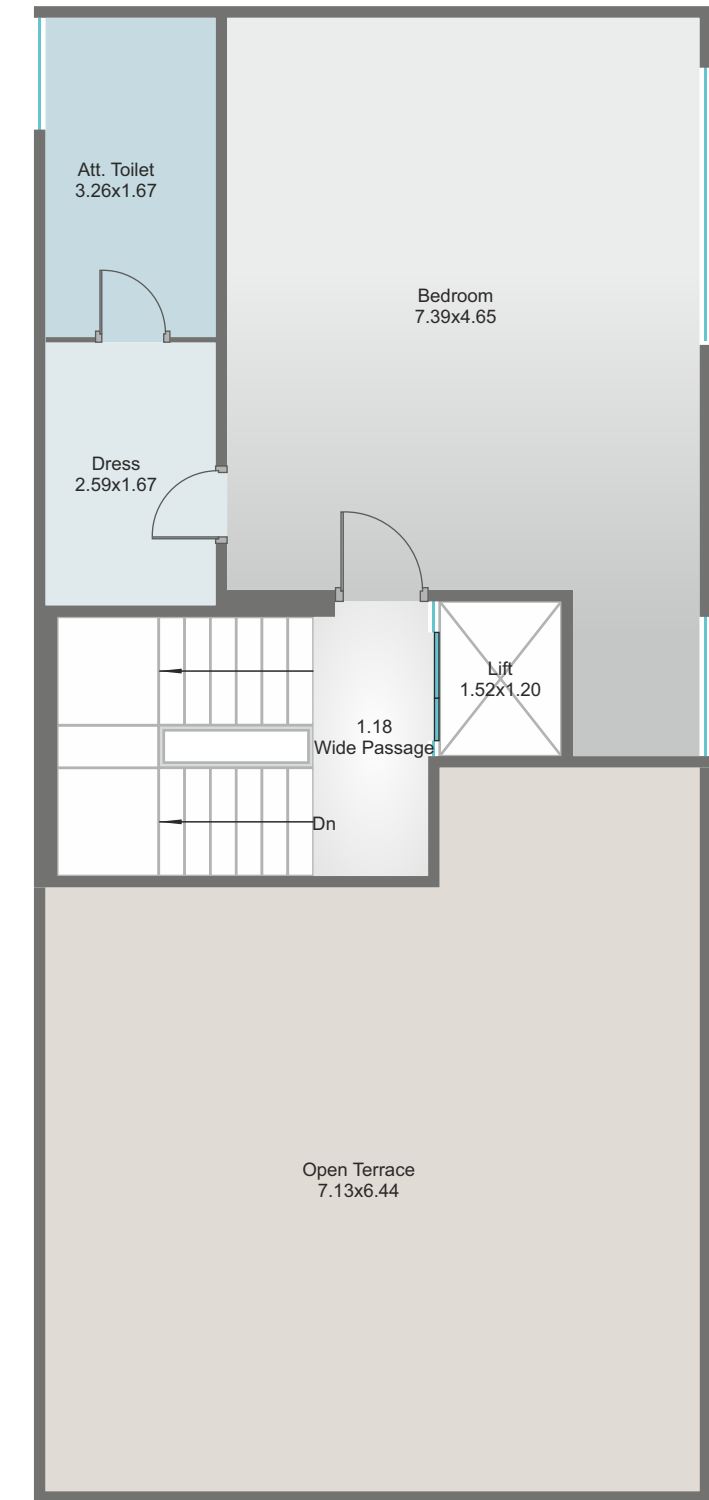
Ground Floor Plan (Plot-6)



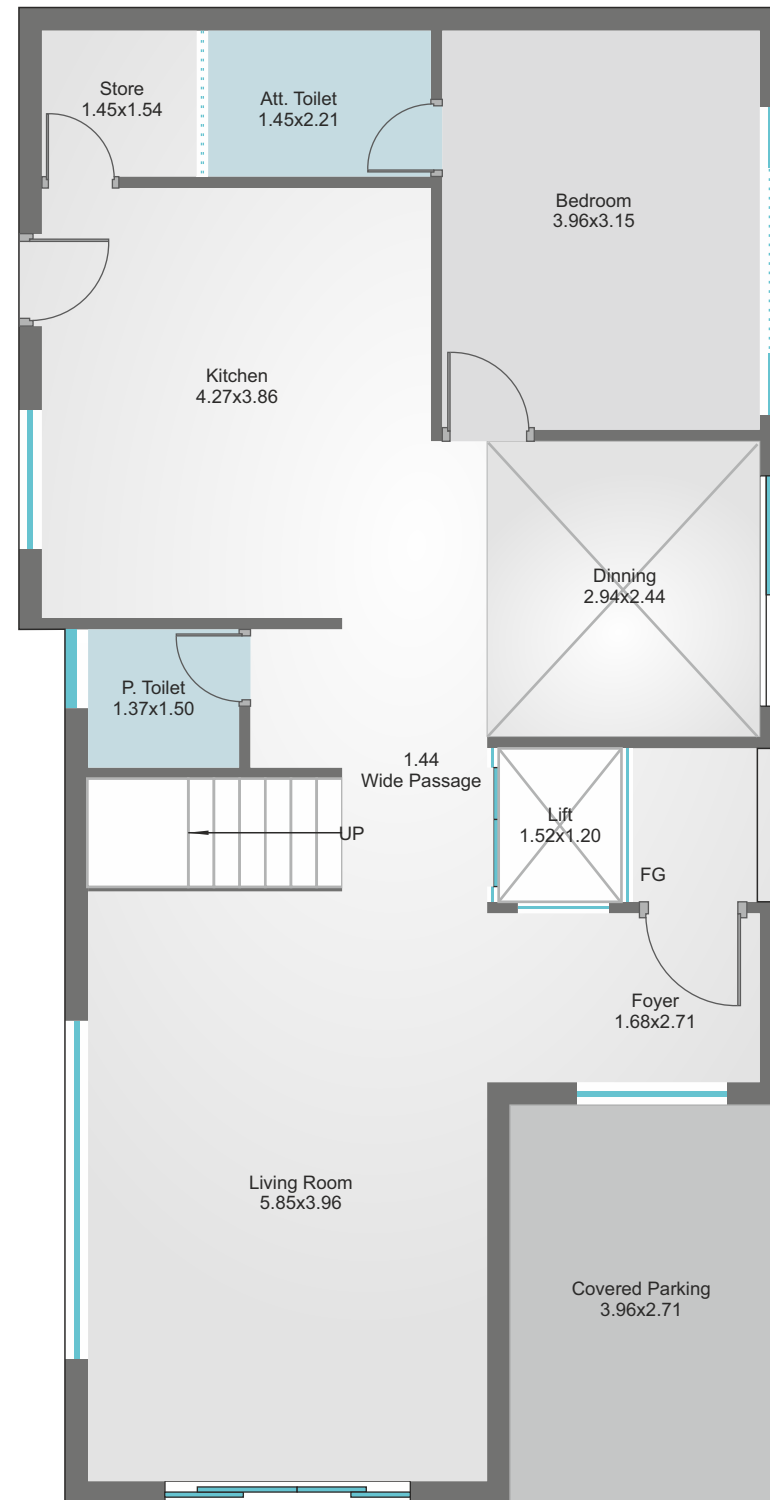
First Floor Plan (Plot-6)



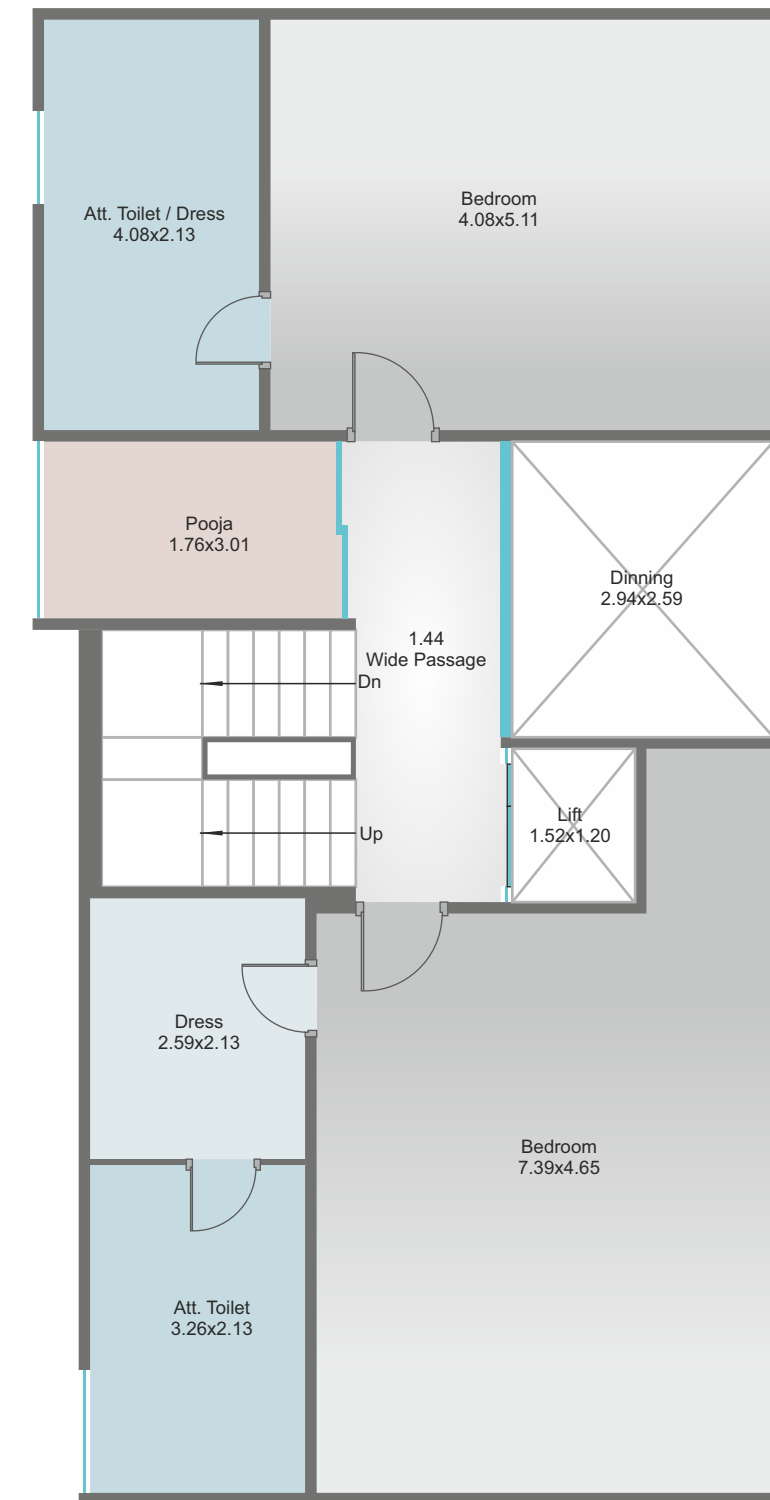
Second Floor Plan (Plot-6)



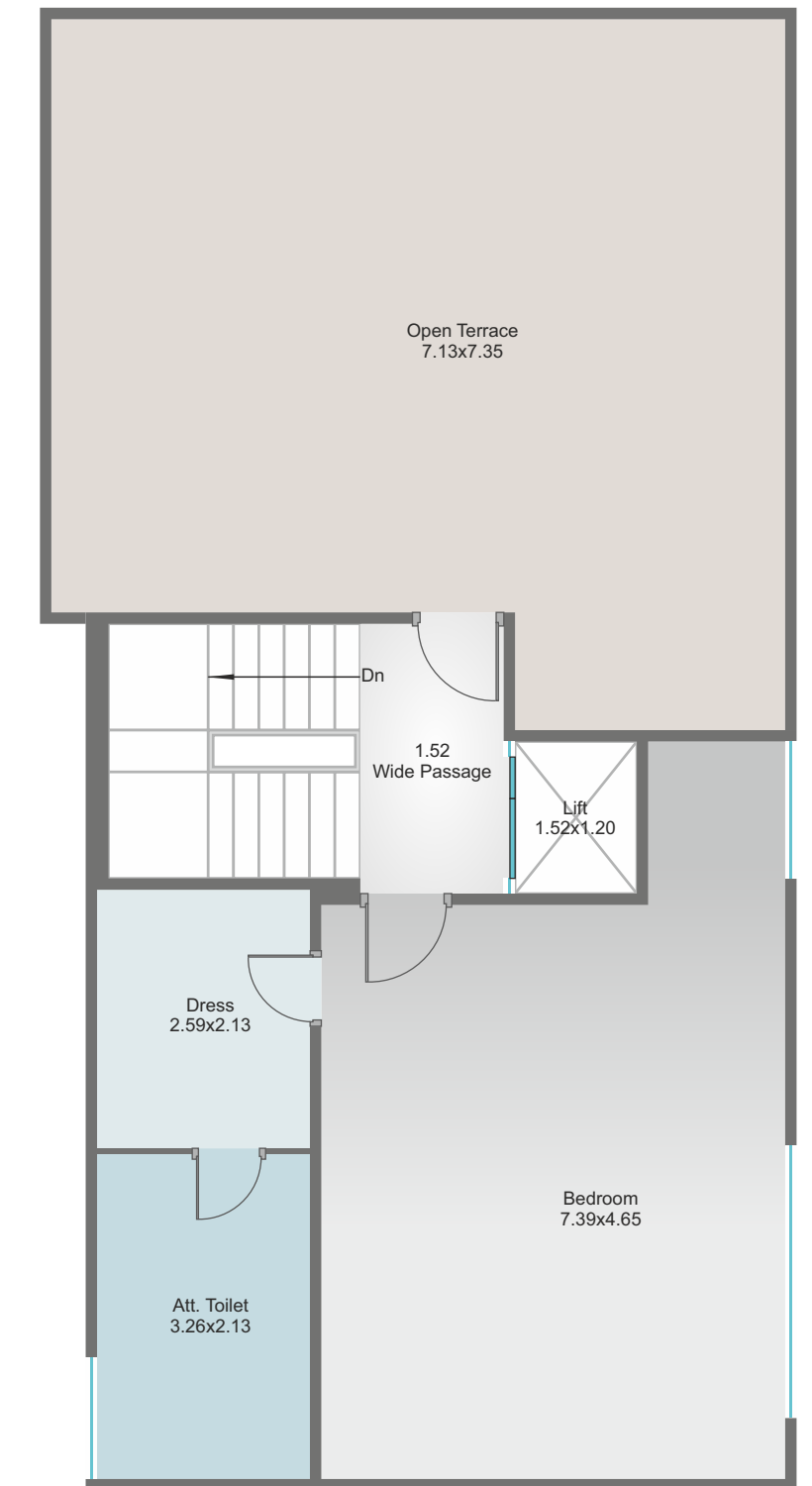
Ground Floor Plan (Plot-2)

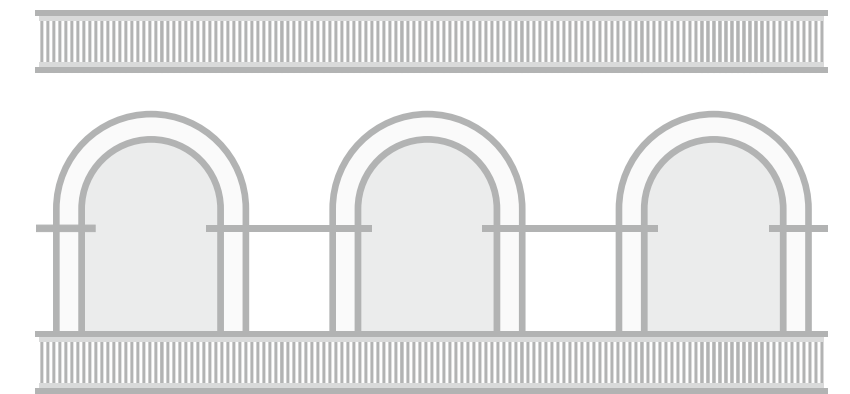


First Floor Plan (Plot-2)



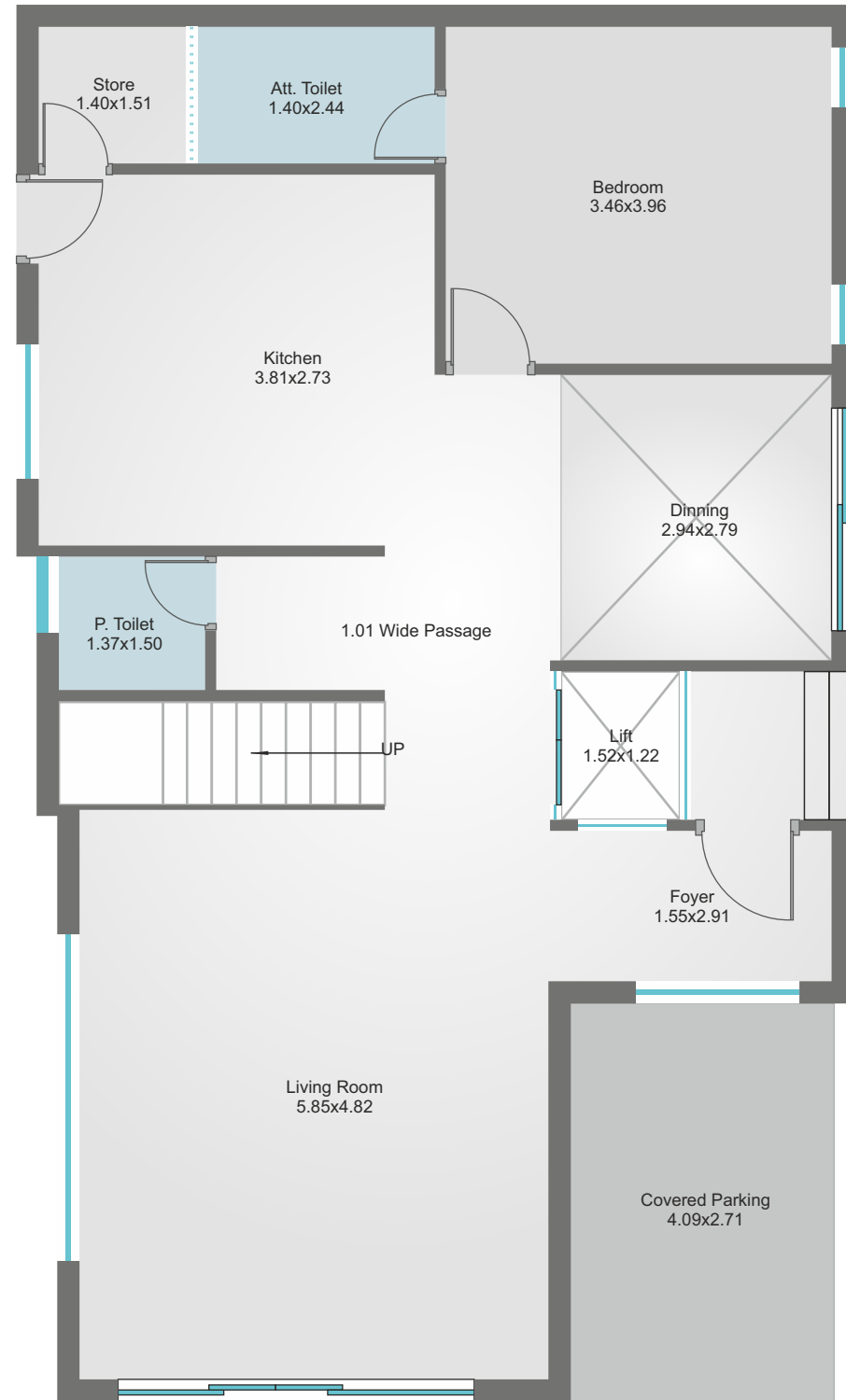
Second Floor Plan (Plot-2)



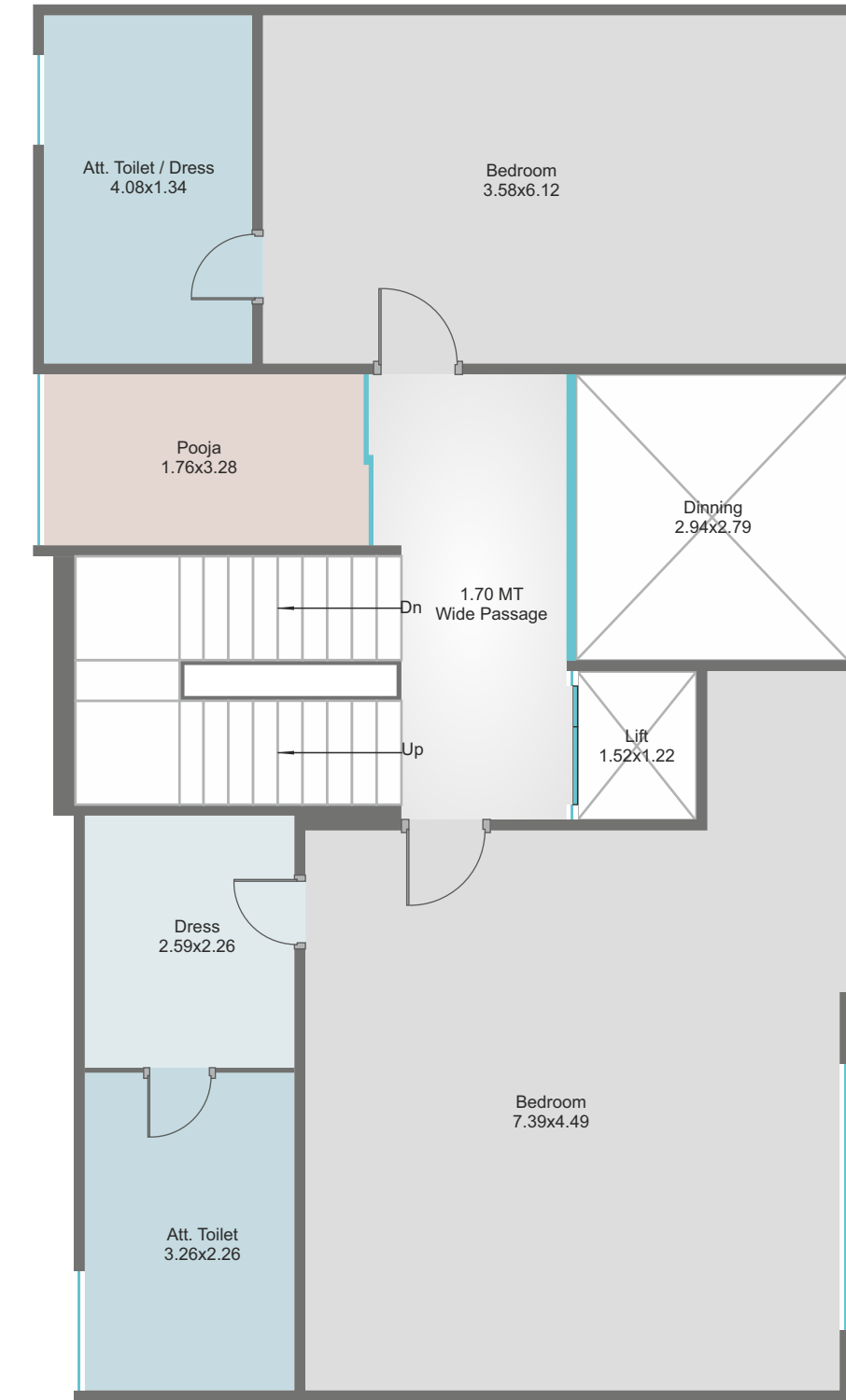




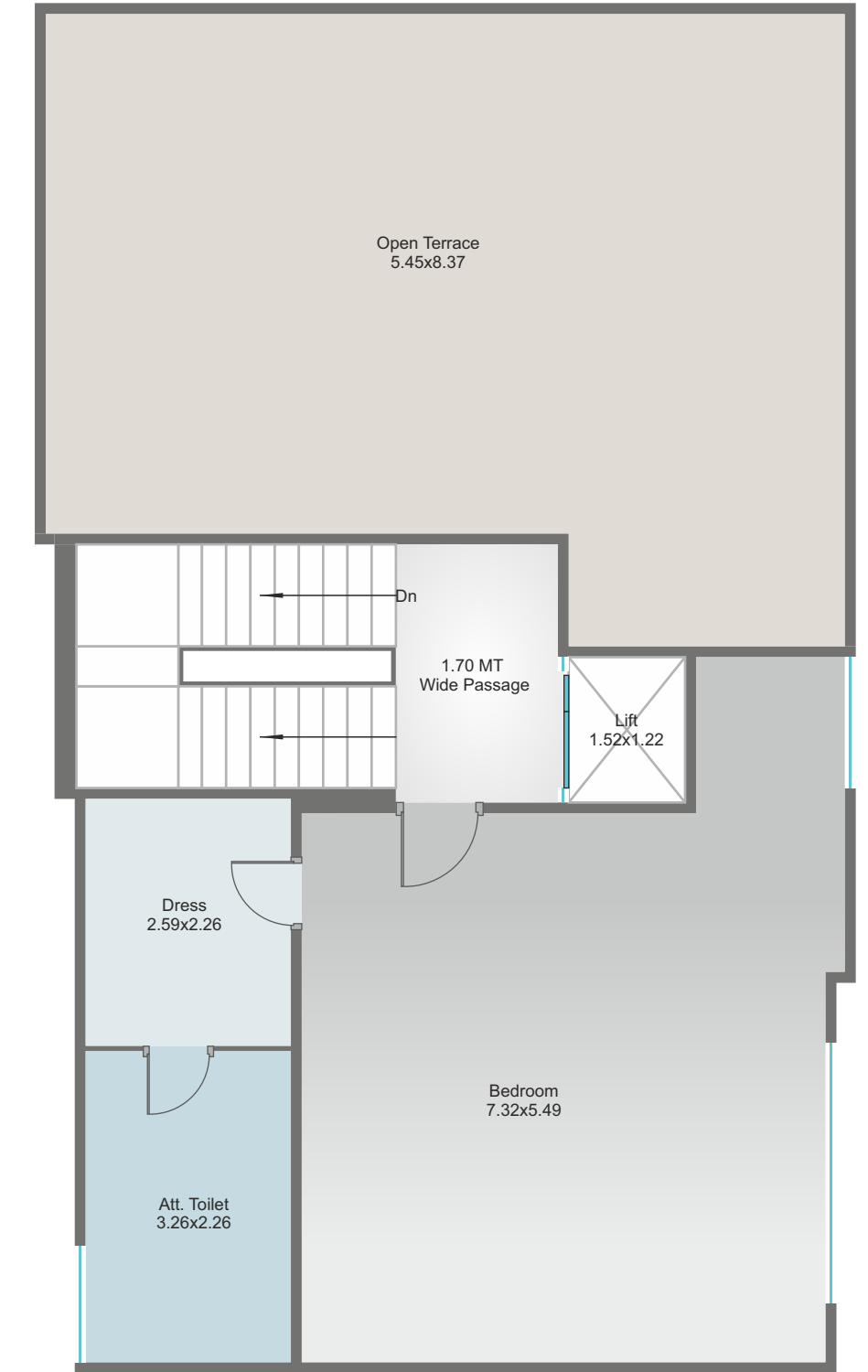
Ground Floor Plan (Plot-3)



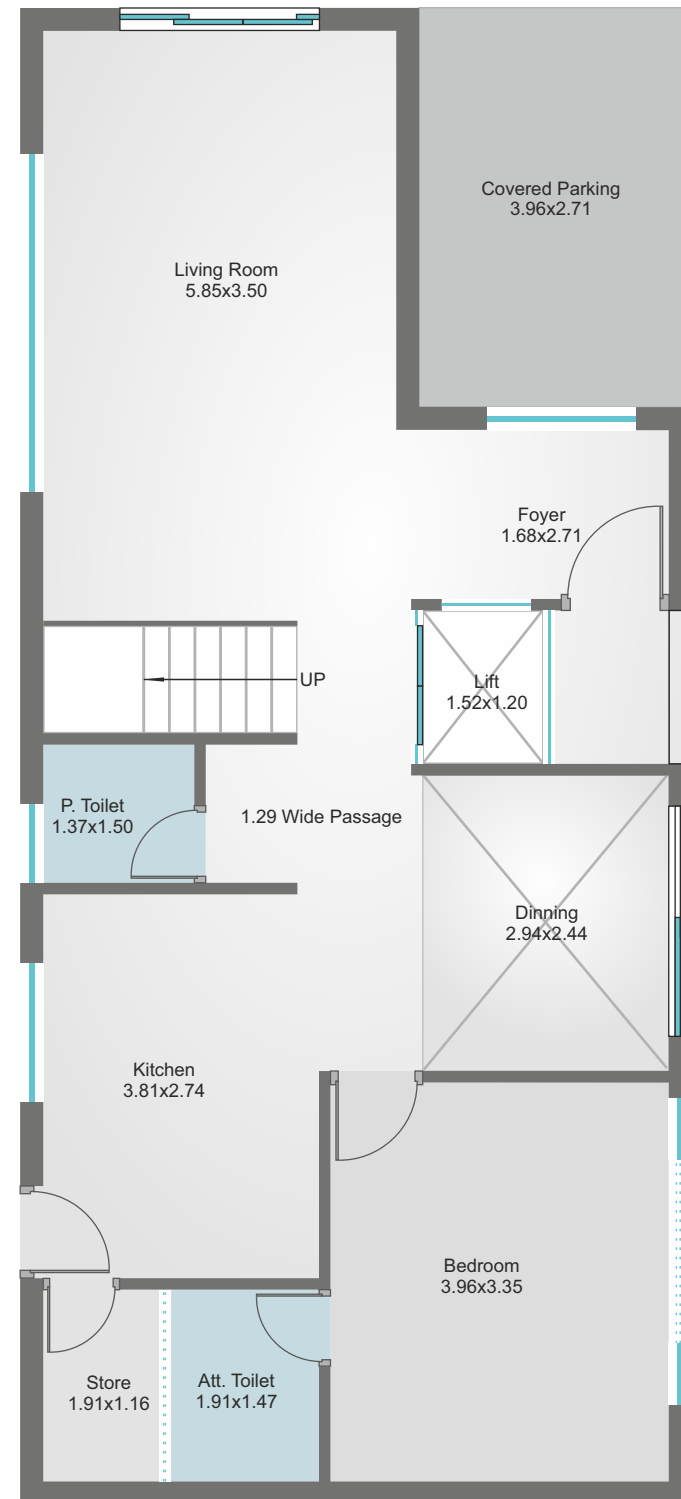
First Floor Plan (Plot-3)



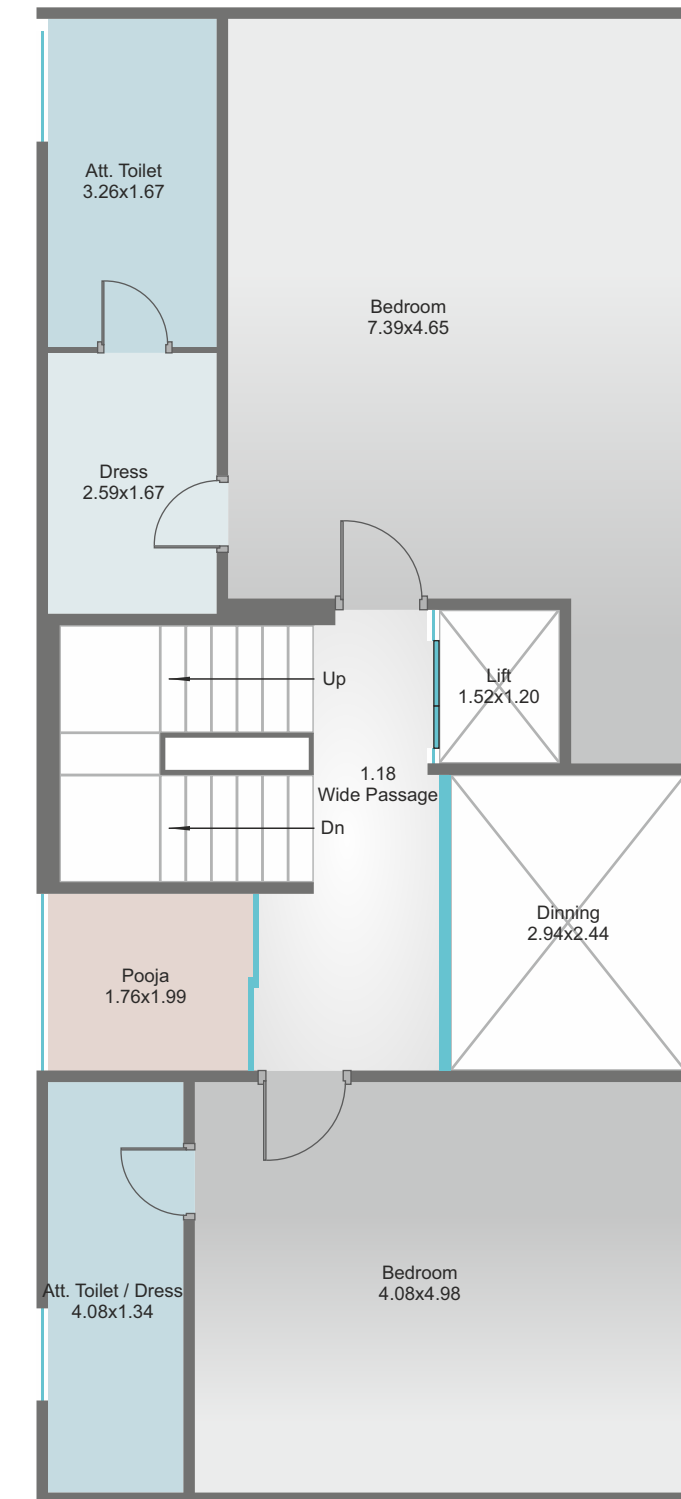
Second Floor Plan (Plot-3)



Ground Floor Plan (Plot-4,5)



First Floor Plan (Plot-4,5)



Second Floor Plan (Plot-4,5)

