



GREEN ParADISE

1-2 BHK DESIRABLE HOMES



GREEN
ParADISE
1-2 BHK DESIRABLE HOMES





PERFECT FAMILY HOMES

GREEN PARADISE OFFERS
1-2 BHK DESIRABLE HOMES
IN 6 HIGH RISE TOWERS

671 - 1015 SQ.FT.



GREEN
Paradise



GREEN
ParADISE

**A NEW PERSPECTIVE
TO CITY LIVING**

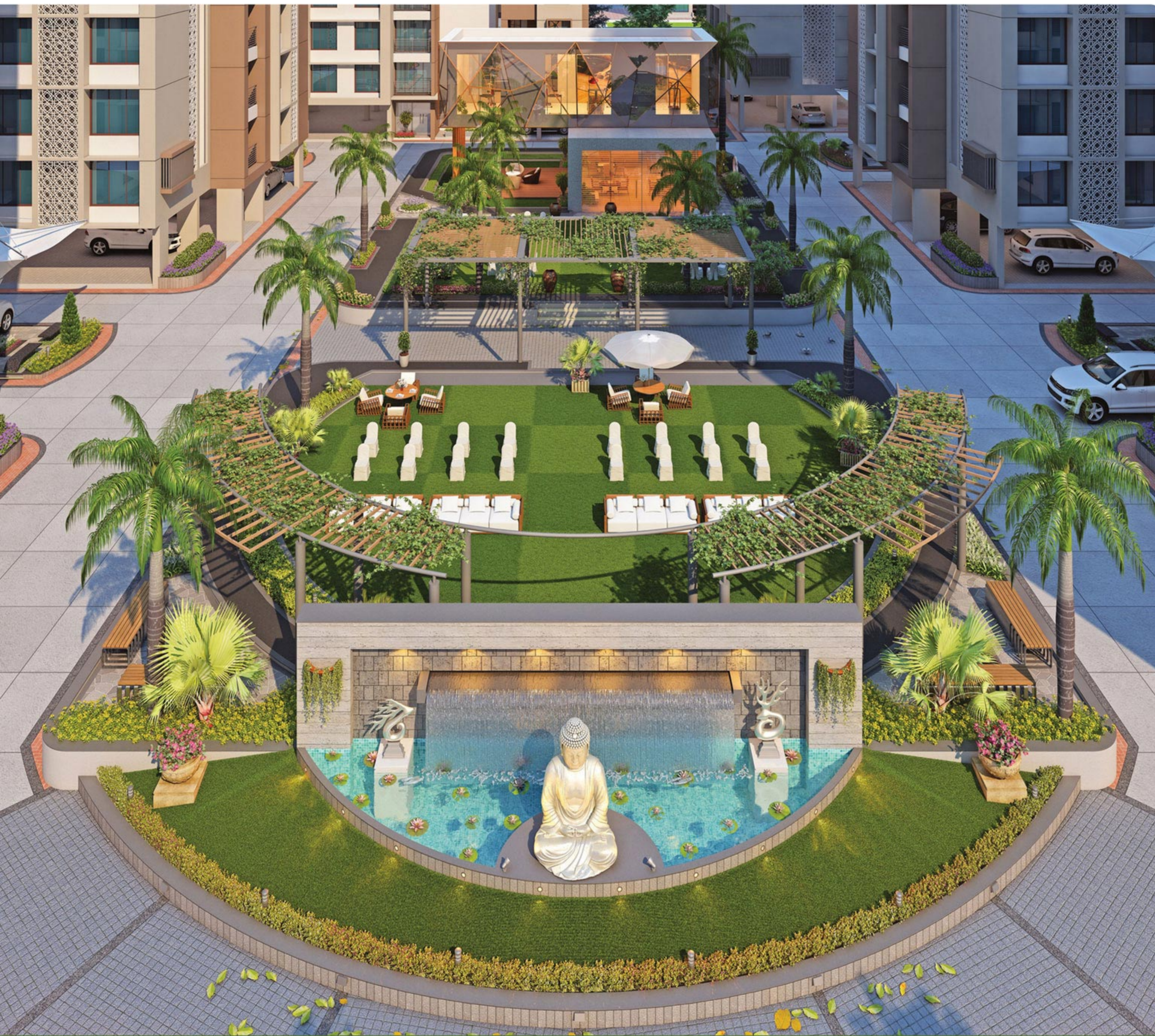
Welcome to a new perspective to living in SURAT, a point of view that answers most of your questions as GREEN PARADISE through the following pages.

AMENITIES

Space for all, in your family.

The residential complex offers amenities and facilities that are hard to find elsewhere.





Club house with gym and indoor games



Open stage deck area for functions



Kids play area



Senior citizen seating area with gazebo



Volleyball court



Half basketball court



Basement parking

GREEN PARADISE

1-2 BHK DESIRABLE HOMES



PROJECT LAYOUT



60'0" WIDE T.P. ROAD

WING **A-B-C-D** TYPICAL FLOOR

Flat No.	Super Built Up	Carpet Area
101, 102 105, 106	1011.00 sq.ft	581.04 sq.ft
103, 104	1015.00 sq.ft	583.30 sq.ft

WING **E-F-G** TYPICAL FLOOR

Flat No.	Super Built Up	Carpet Area
E - 101, 102 F - 101, 102, 103, 104 G - 103, 104	709.00 sq.ft	407.20 sq.ft
E - 103, 104 G - 101, 102	671.00 sq.ft	385.67 sq.ft

WING **H-I** TYPICAL FLOOR

Flat No.	Super Built Up	Carpet Area
H - 101, 102 I - 104, 105	685.00 sq.ft	393.53 sq.ft
H - 103, I - 103	674.00 sq.ft	387.61 sq.ft
H - 104, 105 I - 101, 102	676.00 sq.ft	388.37 sq.ft



WING A-B-C-D
TYPICAL FLOOR PLAN



Flat No.	Super Built Up	Carpet Area
101, 102 105, 106	1011.00 sq.ft	581.04 sq.ft
103, 104	1015.00 sq.ft	583.30 sq.ft

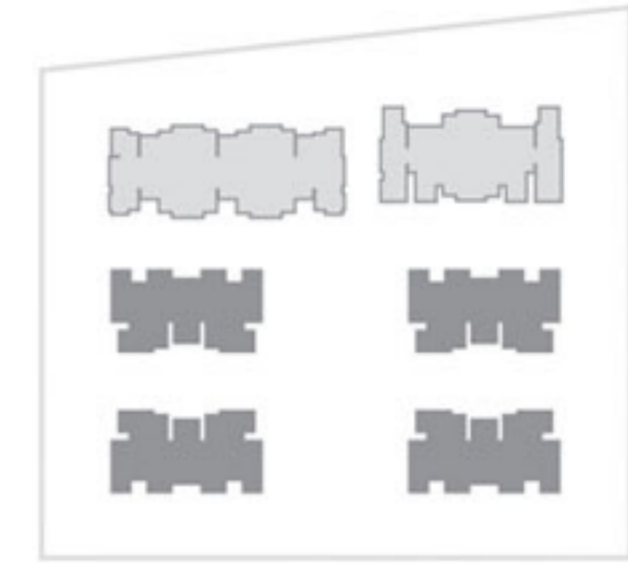




WING A-B-C-D TERRACE FLOOR PLAN

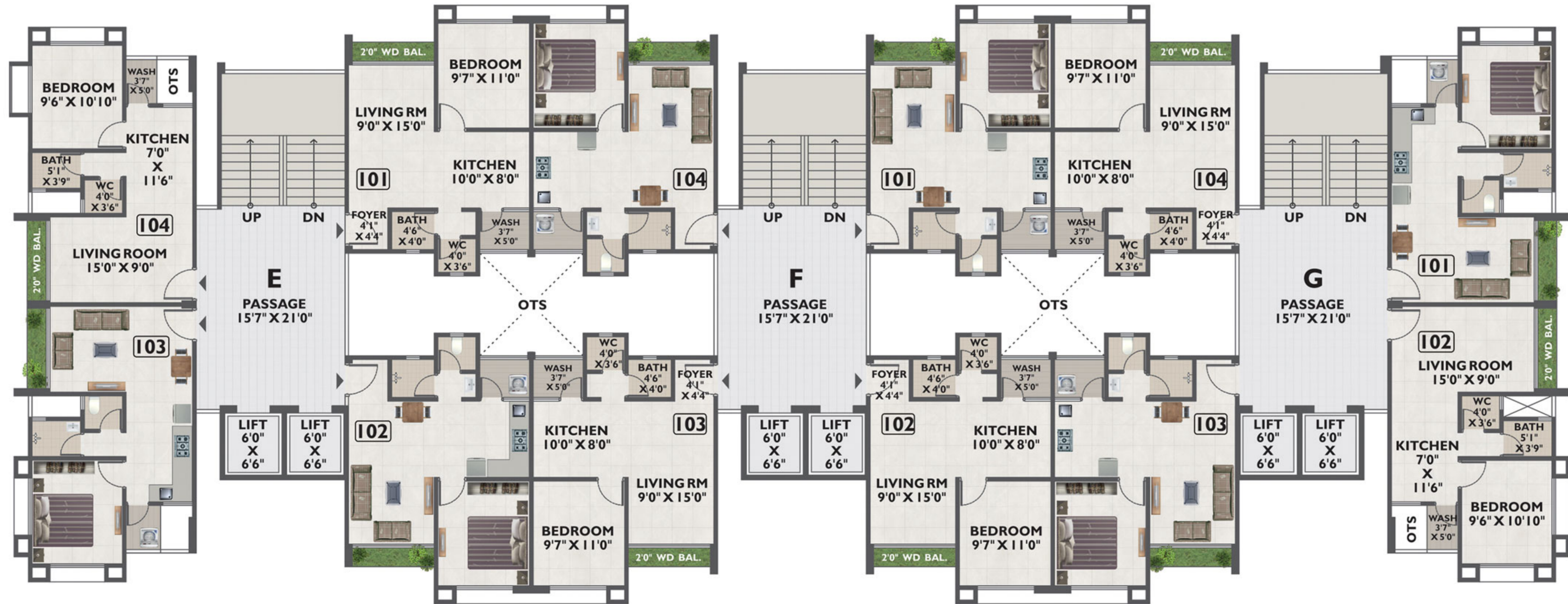
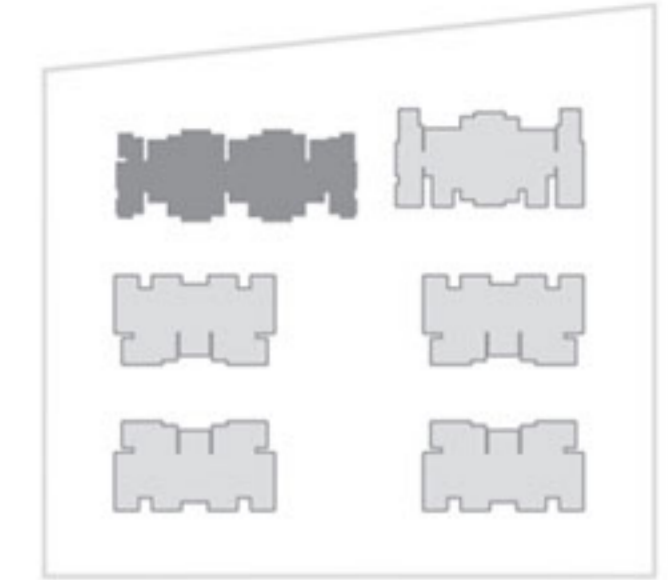


Flat No.	Super Built Up	Carpet Area
A, B - 1, 6 C, D - 1, 6	1011.00 sq.ft	581.04 sq.ft
A, B - 3, 4 C, D - 3, 4	1015.00 sq.ft	583.30 sq.ft



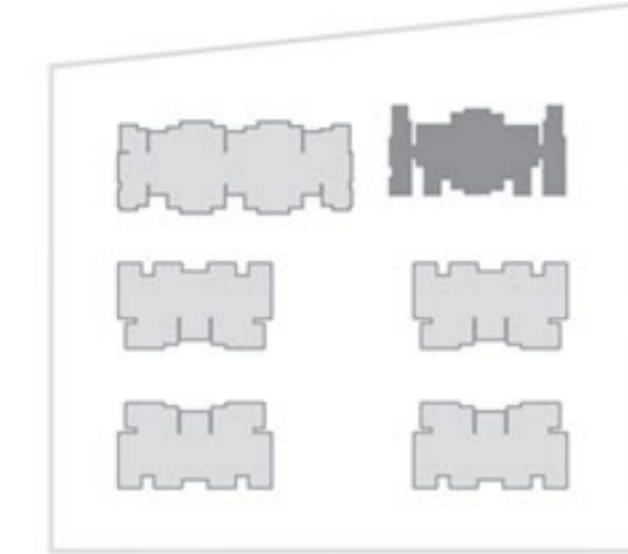


Flat No.	Super Built Up	Carpet Area
E - 101, 102 F - 101, 102, 103, 104 G - 103, 104	709.00 sq.ft	407.20 sq.ft
E - 103, 104 G - 101, 102	671.00 sq.ft	385.67 sq.ft





Flat No.	Super Built Up	Carpet Area
H - 101, 102 I - 104, 105	685.00 sq.ft	393.53 sq.ft
H - 103, I - 103	674.00 sq.ft	387.61 sq.ft
H - 104, 105 I - 101, 102	676.00 sq.ft	388.37 sq.ft



SPECIFICATIONS

Flooring - Granamite tiles of 24"x 24" in the living room, kitchen, dining room and other areas of the house; Vitrified tile flooring in the common passage.

Kitchen / Store - Granite top kitchen platform with S.S. sink and Glazed tile dado up to the lintel level with adequate Kota stone shelves in the store room.

Toilet / Plumbing - Glazed tiles dado up to the lintel level with exclusive design in all toilets; Concealed plumbing with standard quality sanitary wares and C.P. fitting; Corrosion-free CPVC / UPVC pipes; Hot water supply pipelines from the wash area to all toilets; Fresh water supply in the kitchen and in all toilets, except for in the flush cock and bib cock.

Doors - Well Designed main door and others are flush doors with wooden frame, Toilet & Wash doors are in granite frame. S.S C.P. hardware fittings.

Windows - Sliding Aluminum section powder coated with a single vision reflective glass window fixed on granite stone sill.

Electrification - Sufficient points in concealed wiring with modular range accessories. Domestic points for household appliances. TV points in living room and master bedroom. AC point in master bedroom.

Interior / Exterior Finish - Internal wall surface finish with JK / Birla white Lapi Exterior wall finished with 2 coat Mala plaster and water repellent acrylic emulsion.

CAMPUS FEATURES

Entrance Gate - Gorgeous entrance with landscape, Bus pick-up stand and water sculpture; Well-designed security cabin at the entrance gate.

Reception & Foyer - Entrance foyer with a spacious reception and waiting lounge, benches for sitting and name plates.

CCTV Facility - CCTV camera security system at the main gate, the entrance foyer of each building, in the indoor games room, gymnasium and garden.

Generator Facility - Common generator for lift, water pump and common passage.

Parking Facility - Ample parking space on the ground level; Basement parking with separate exit and entry ramps for vehicles.

Compound Wall - Well-designed compound wall around the campus.

Road - Well-designed paver blocks / RCC road

Structure - Design as per latest revised earthquake code of ISO 2016 with red bricks construction.

Water Tank - Underground and overhead water tanks of sufficient capacity with fully glazed tile dado in each building.

Lift - Two auto-door elevators in each building.

Water Supply - SMC water and bore water for domestic use of each flat & common amenities of project.

A PROJECT BY



S I N C E 1 9 8 3
D E V E L O P E R S

FOR MORE DETAILS

0901 6660 660 - 0762 2000 865

crm@greengroup.co.in | www.greengroup.co.in

RERA NO. - PR/GJ/SURAT/SURAT CITY/SUDA/RAA01438/290118