



A PROJECT BY
ZAINA ASSOCIATES



architecturefirm

- Notes**
- Legal/Documents/Stamp Duty charges extra as applicable to be borne by members.
 - Applicable government taxes including GST to be borne by members.
 - Deposits for all services to be borne by members.
 - Society maintenance charges to be borne by members.
 - External and internal changes strictly not allowed.
 - The brochure does not form part of an offer contract or agreement.
 - All plans/drawings/features/specifications are subject to approval of respective authorities.
 - All rendering /floor plans/pictures and maps are artists conception and not actual depiction of building.



Milestone
SPITI

For Zaina Associates

[Signature]
Partner

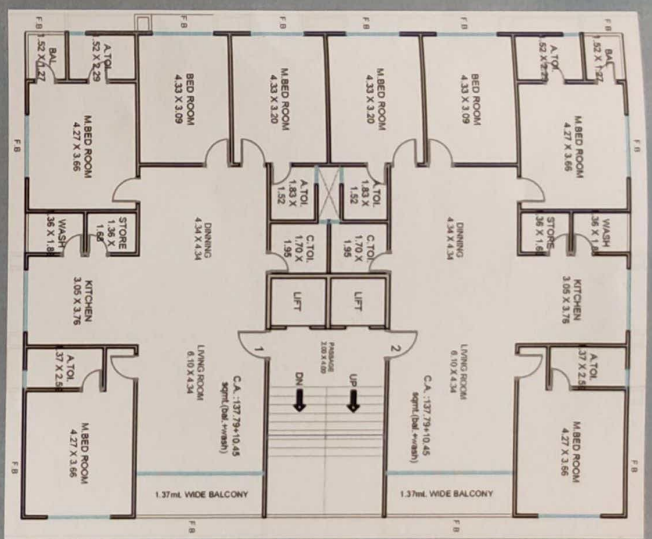


18.00 MT. WIDE ROAD

PROPOSED LAYOUT PLAN

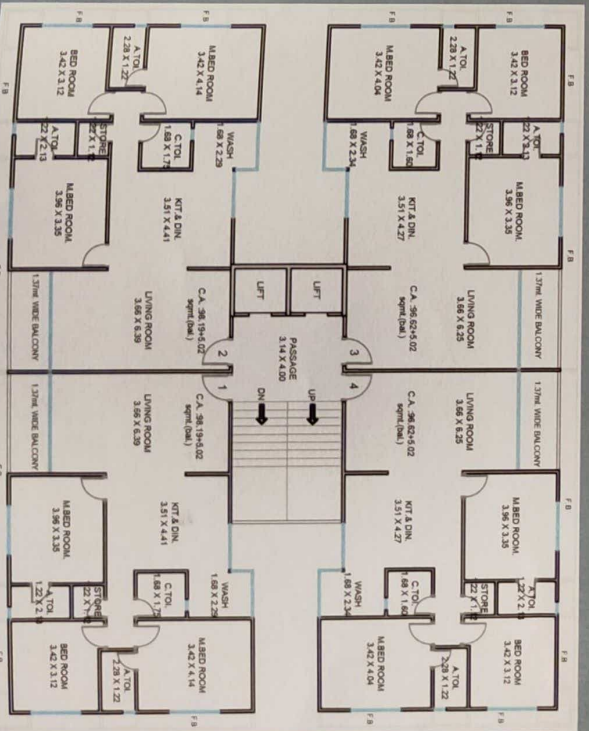


BLDG. B - 4BHK



PROPOSED TYPICAL FLOOR PLAN, LVL. 1-12

BLDG. A - 3BHK



PROPOSED TYPICAL FLOOR PLAN, LVL. 1-12

For Zaina Associates Partner





Specifications

Flooring:

Tiles flooring in living room, dining kitchen and bedrooms.

Kitchen:

Granite stone platform with stainless steel sink. Designer tiles dado above platform up to lintel level.

Wash:

Kota flooring and tiles dado up to lintel.

Bathrooms:

Designer tiles on floor and up to lintel level on walls in separate bathrooms.

Sanitary Ware:

Standard ISI make.

Bath fittings:

Standard ISI make.

Doors:

Wooden frame and laminated flush door at entrance. Granite frame and laminated flush doors in all other rooms.

Window:

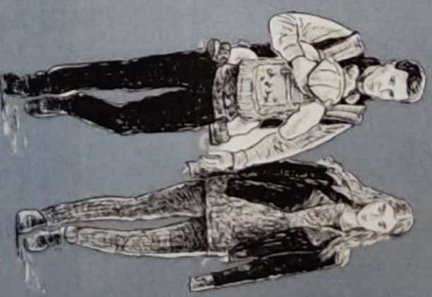
Anodized aluminium windows with granite frame. Louvered aluminium windows with granite frame in bathrooms.

Electrifications:

Concealed electrification with modular switches of standard ISI mark.

Internal Finish:

putty finish on walls and ceilings.



For Zaina Associates

Partner