



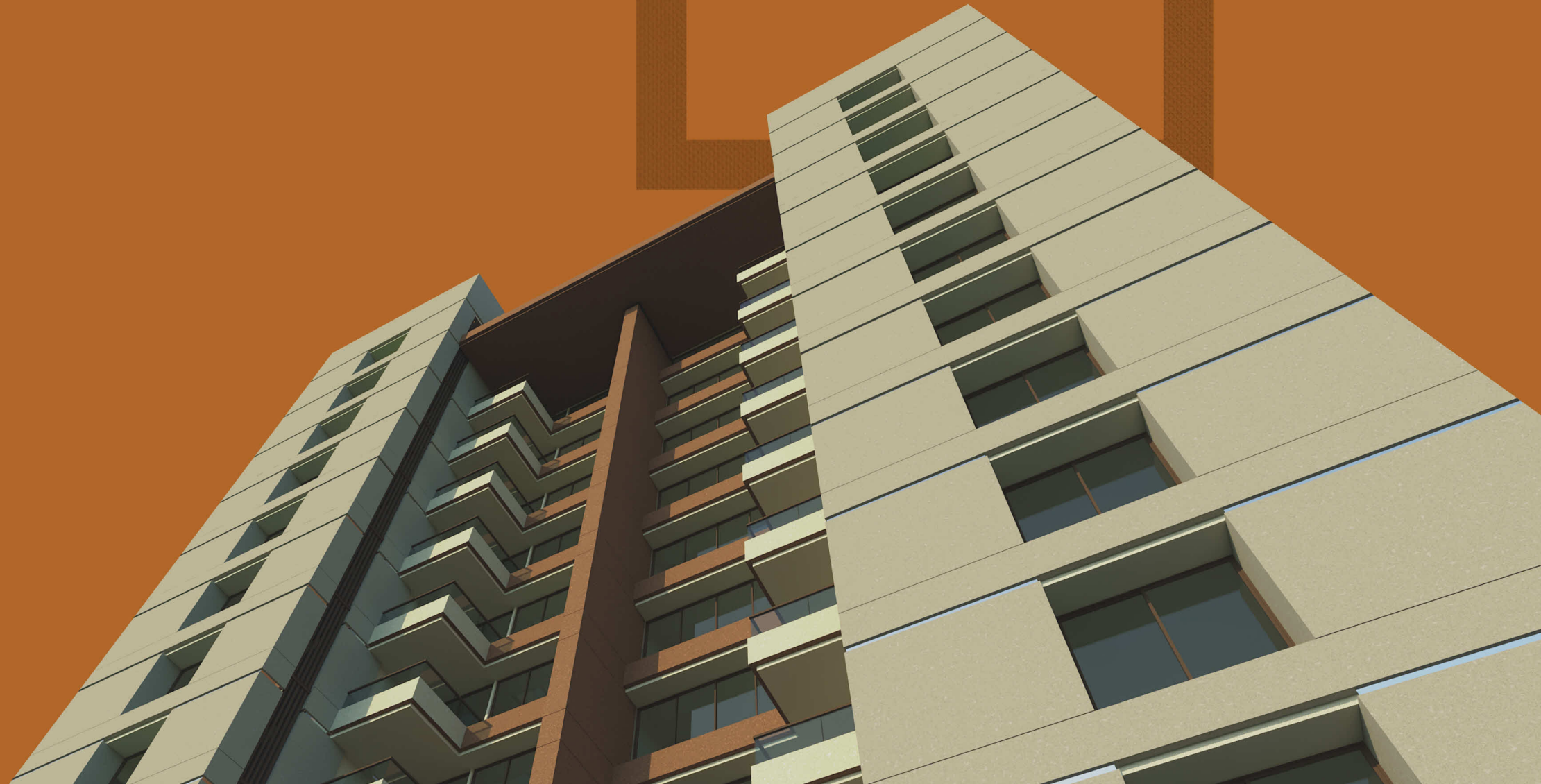
3 & 4  
BHK  
HIGHER  
LIVING

A square frame with a thick, dark brown border. Inside the frame, the text "PIRAMYD" is in a small, black, sans-serif font. Below it, the word "platina" is written in a large, lowercase, orange-brown font. At the bottom, the tagline "AN INSIGNIA OF PREMIUM LIVING" is written in a small, black, sans-serif font.

WHERE  
YOU EMBRACE  
THE PRIVILEGED LIFE

Once in a lifetime comes  
a residential project that  
completely redefines the way  
you look at and live your life.  
These magnificent 3 & 4 BHK  
apartments elevate your  
lifestyle to an imperial level.

PIRAMYD  
platina  
AN INSIGNIA OF PREMIUM LIVING



WHERE YOU  
**RESIDE AT**  
THE HEART OF  
THE CITY

---

A location  
that connects you to everything  
that is important in life.  
There isn't a better address than this.

---



WHERE  
**THE LUXURIES**  
ARE AS  
**SPARKLING**  
AS **STARS**

---

This incredibly  
glorious architecture  
encompasses all the luxuries you  
need to live the life of your dreams.

---



WHERE YOU  
**NATURE** IS YOUR  
TRUE **COMPANION**

---

Such lush green landscape  
is nothing less than a blissful nirvana uplifting  
your mind, body and soul.  
It inspires absolute peacefulness and joy.

---



WHERE  
YOU  
**REJOICE LIFE  
EVERY DAY**

Here, you get to embrace and experience  
an extensive range of fabulous lifestyle  
amenities that let you relax and rejuvenate  
in the most wonderful way.



# BASEMENT FLOOR PLAN







# GROUND FLOOR PLAN



## LEGEND

- 01) Entry / Exit
- 02) Entrance Foyer
- 03) Electric Meter Space
- 04) Recreational Area
- 05) Waiting
- 06) Washing Area
- 07) Passage
- 08) Pantry
- 09) Conference Hall
- 10) Multipurpose Hall
- 11) Children Play Area
- 12) Party Lawn
- 13) Ramp DN To Basement
- 14) Parking



WIDE ROAD

# FIRST FLOOR PLAN

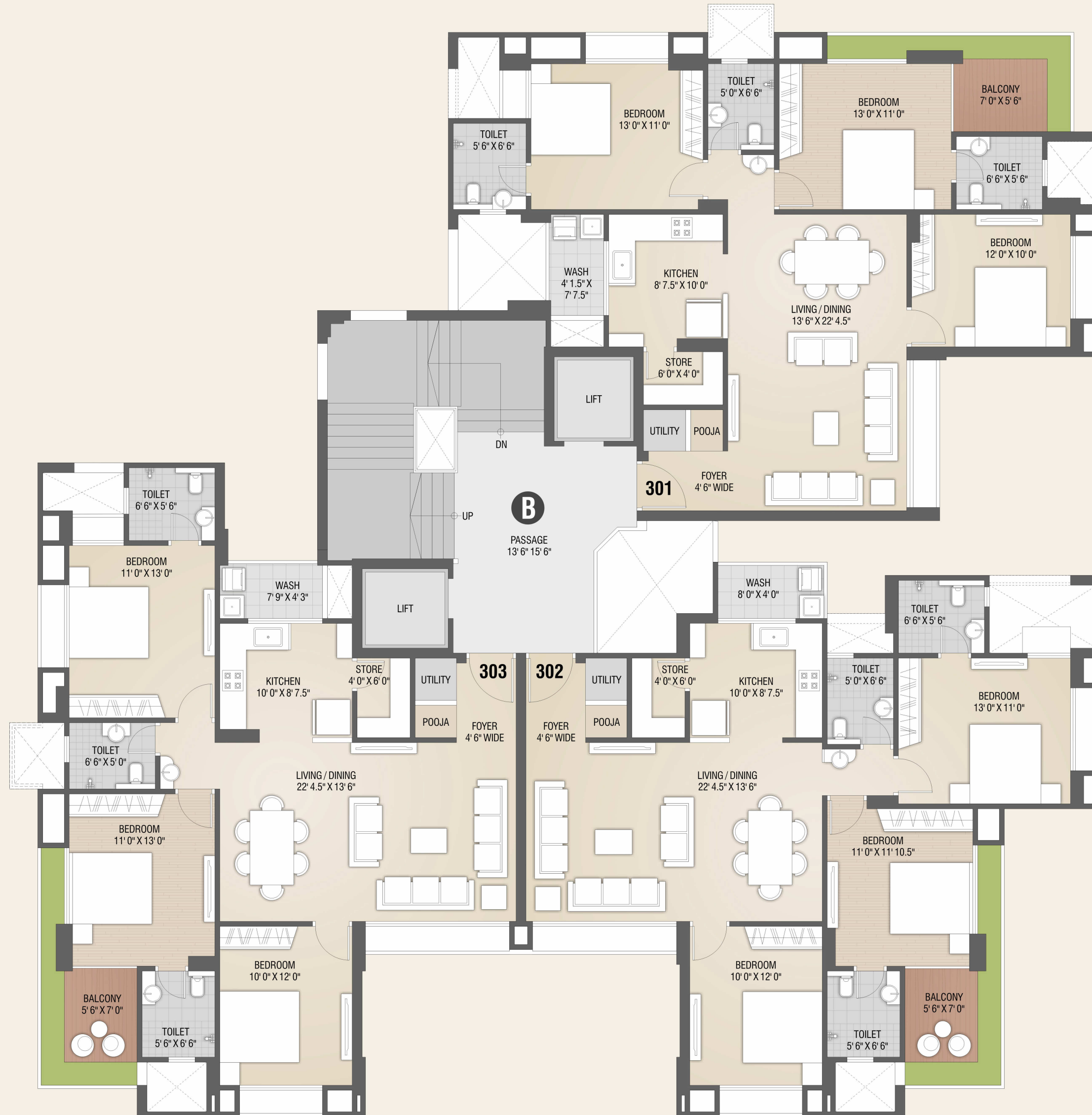
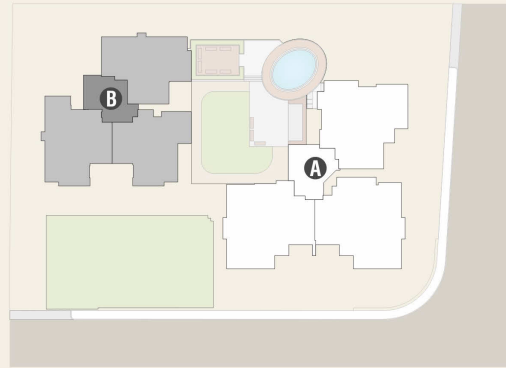


## LEGEND

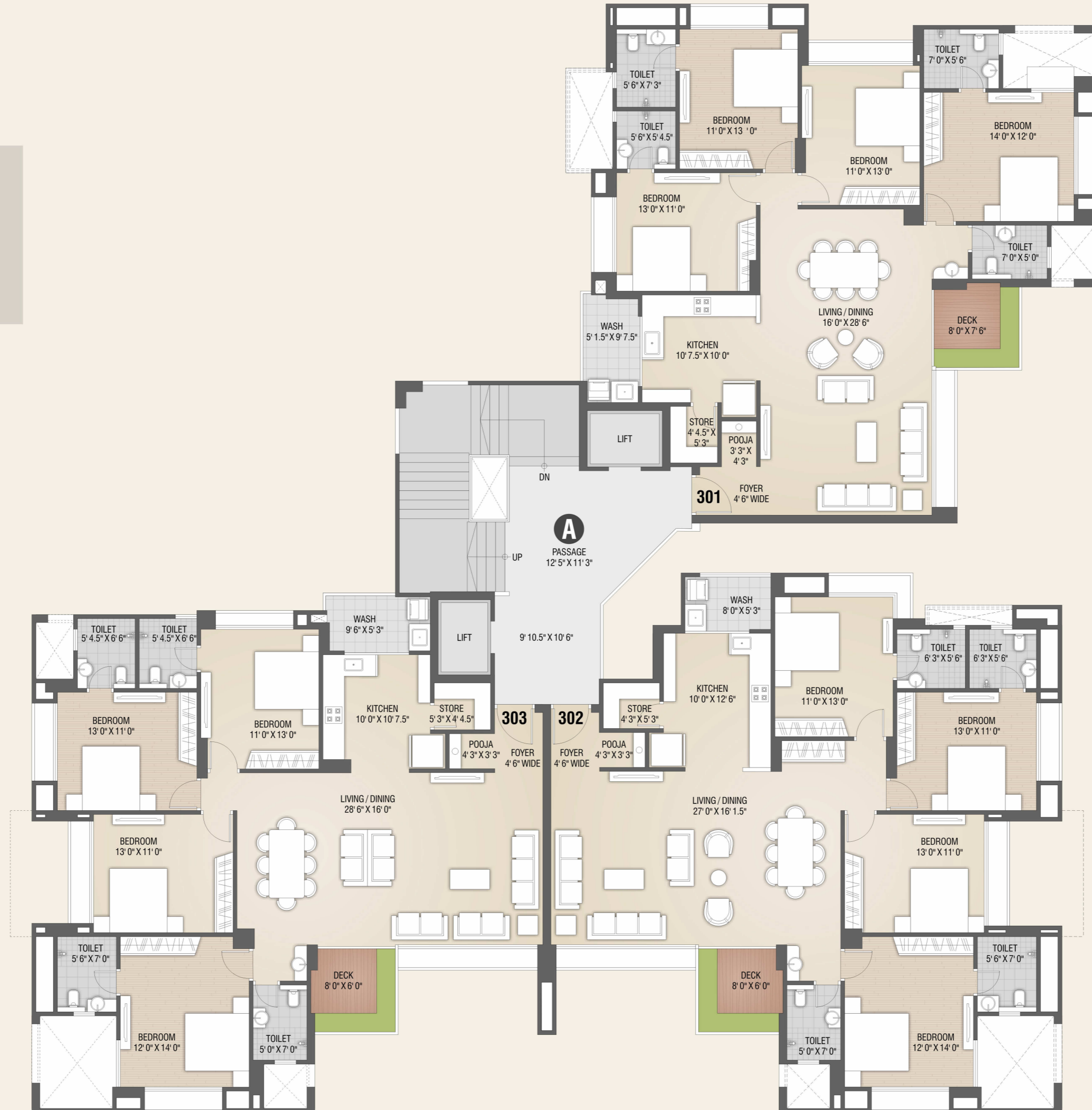
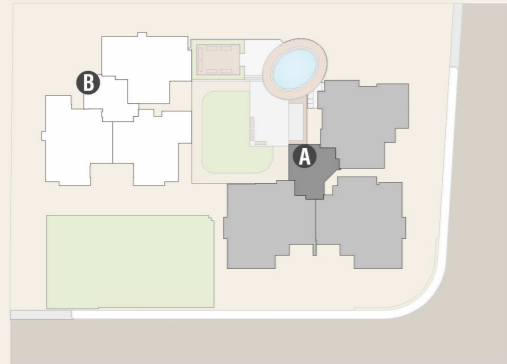
- 01) Society Office
- 02) Gym
- 03) Terrace Development For Children
- 04) Game Zone
- 05) Yoga
- 06) Jogging Track
- 07) Sitting Area
- 08) Green Space
- 09) Gazebo
- 10) Water Body With Cascsde



# 3 BHK FLOOR PLAN



# 4 BHK FLOOR PLAN



## UNITS SPECIFICATION

### LIVING SPACES

- Italian Flooring in living room
- One master bed room with wooden floor
- 32" x 32" high quality vitrified tile flooring in other bedrooms

### KITCHEN

- Granite/quartz stone kitchen platform with a S.S. SINK
- Ceramic tiles dado
- R.O. water Purifier of standard make
- Gujarat gas piped connection

### STORE

- Adequate stone shelves

### WASH AREA

- Kota stone flooring with adequate electrical, plumbing and drainage points.

### TOILET

- Vitrifies/Ceramic tiles up to lintel level
- Jaguare / kohlar / grohe equivalent CP fitting with canceled plumbing
- Common toilet designed with vitrified / ceramic tiles
- Sanitary ware of jaguar / cera / equivalent make
- Centralized geyser connection with geyser fitting in wash area

### INTERIOR

- mala plaster finish with good quality of putty finish

### DOOR-WINDOW

- Designer main door with veneer and teakwood frame
- Designer laminated internal Doors
- All doors fitted with standard locks
- Fully glazed aluminum windows

### ELECTRICAL

- Sufficient points in concealed copper wiring
- Modular switches
- 3 phase power supply to each flats

### PLUMBING & DRAINAGE

- Standard quality C.P.V.C./P.V.C. pipe of astral / supreme make.

### WATERPROOFING

- All toilet and terraces are well water proofed.

### FAÇADE TREATMENT

- Double coat plaster with weather shield paint

### ELECTRICAL & POWER BACK-UP

- Standard quality Generator of sufficient capacity of power back up for elevators, Water pumps and general lighting of common areas.

## CAMPUS FACILITY

### LANDSCAPING

- Site development with landscaping

### SECURITY

- High security with access control of members

### INTERCOM FACILITY

- Security system with CCTV in campus and intercom facility

### FIRE SAFETY

- Fire hydrant facility as per NORMS

### ELEVATORS

- Standard size Elevators of KONE SCHINDLER Equivalent make

### ANTI-TERMITE TREATMENT

- Anti-termite treatment in the campus.

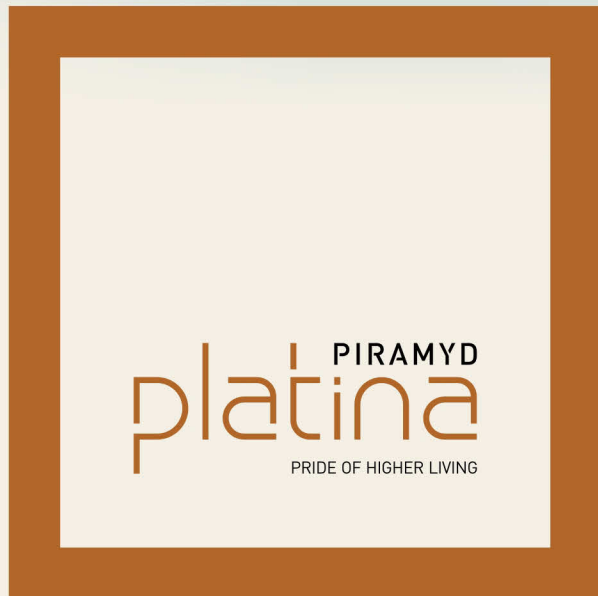
### STRUCTURAL

- Earthquake resistant Structural Design, for RCC frame structure with isolated footings and in fill masonry walls.

**Note** • All rights for alteration / modification and development in design or specifications by architects and / or developer shall be binding to all the members. • B.U.C. (Building Use Certificate) As Per S.M.C. Rules • Clear Titles for Loan purpose • This brochure is for private circulation only, by no means it shall form part of any legal contract documents.

**WE REQUEST** • Stamp duty, Registration charges, Legal charges, GEB/TORRENT/SMC charges, Society maintenance charges expense etc. shall be borne by the purchaser. • GST, as & if applicable, will be borne by the purchaser. • Any additional charges or duties levied by the Government / Local authorities during or after the completion of the scheme like SMC tax, betterment/ IC charge (deposit) will be borne by the purchaser. • In the interest of continual developments in design & quality of construction, the developer reserves all rights to make any charges in the scheme including technical specifications, designs, planning, layout & all purchasers shall abide by such charges. • Changes/ alteration of any nature including elevation, exterior color scheme, balcony grill or any other charges affecting the overall design concept & outlook of the scheme are strictly NOT PERMITTED during or after the completion of the scheme. • Internal conducting and laying of all low voltage facility such as telephone, cable tv, dish tv and internet cables shall be provided for each unit, all external laying and drawing of low-voltage cables such as mentioned or other shall be strictly laid as per consultants service drawings with prior consent of Developer / Builder's office. No wires/ cables / conduits shall be laid or installed such that they form hanging formation on the exterior faces. • This brochure is intended only for easy display & information of the scheme & does not form part of legal documents.

# LOCATION MAP



Site Address  
**Piramyd Platina**  
 T.P.14,F.P.89  
 Pal, Adajan, Surat



Contact Details  
**+91 89800 93000**  
 info@piramydgroup.in  
 www.piramydgroup.in

ARCHITECT

