

Pramukh

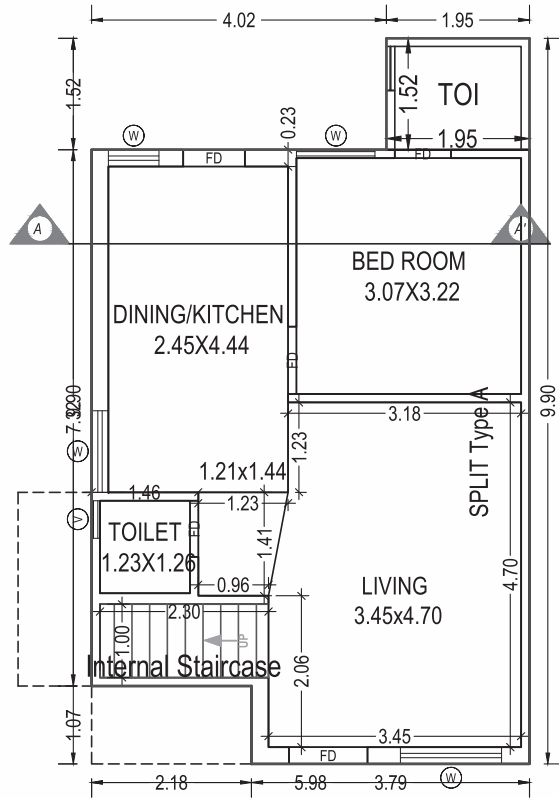
VILLA

— 3 BHK LUXURIOUS VILLA —

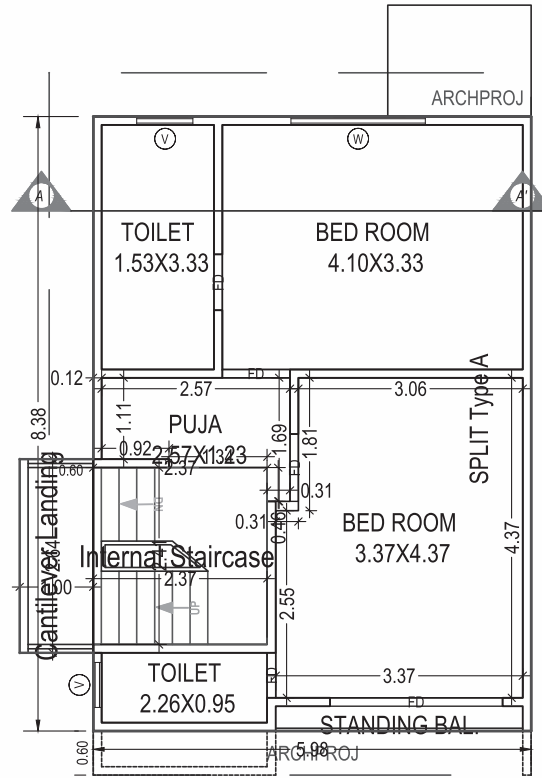




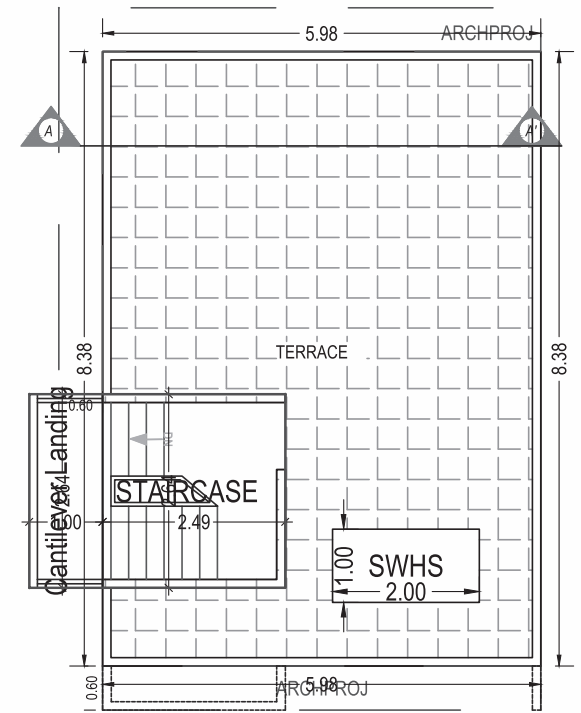
Layout Plan



■ Ground Floor Plan

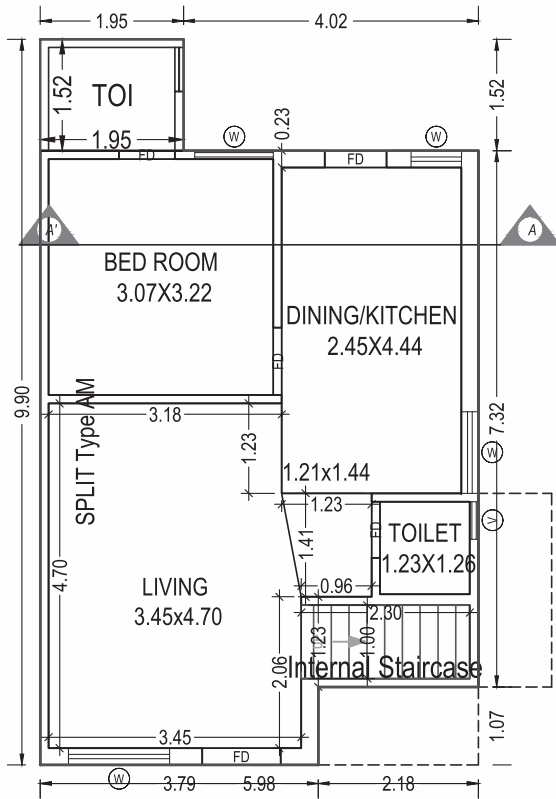


■ First Floor Plan

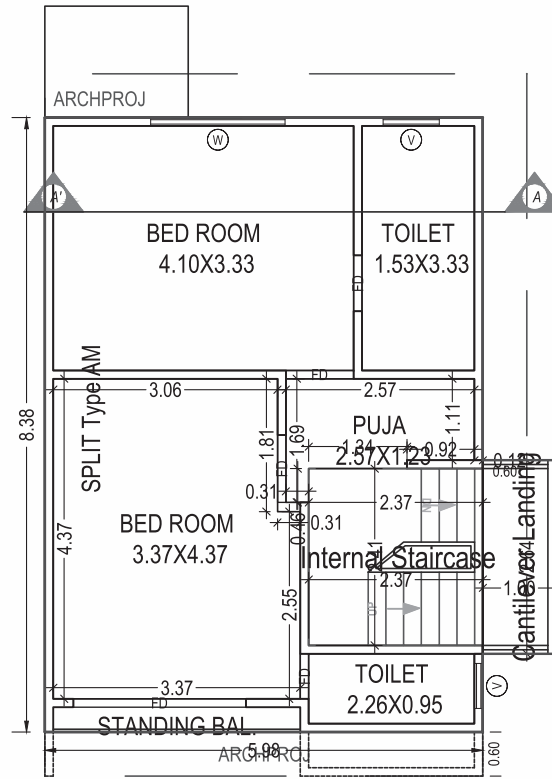


■ Terrace Floor Plan

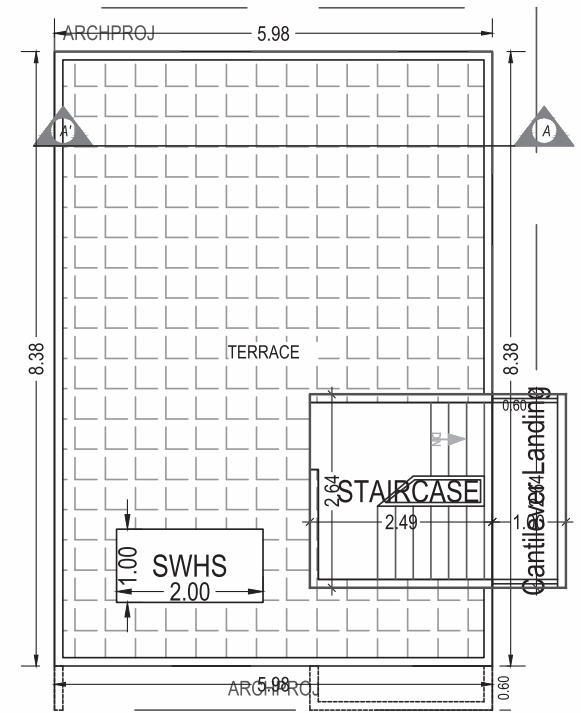
TYPE-A



■ Ground Floor Plan

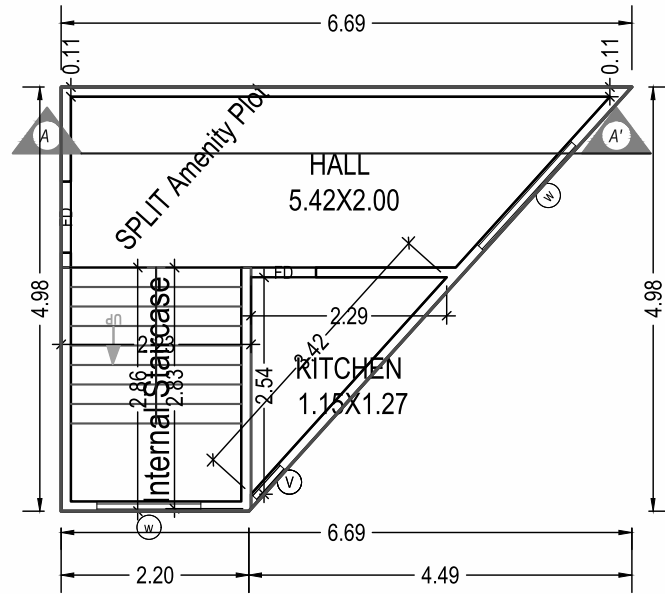


■ First Floor Plan

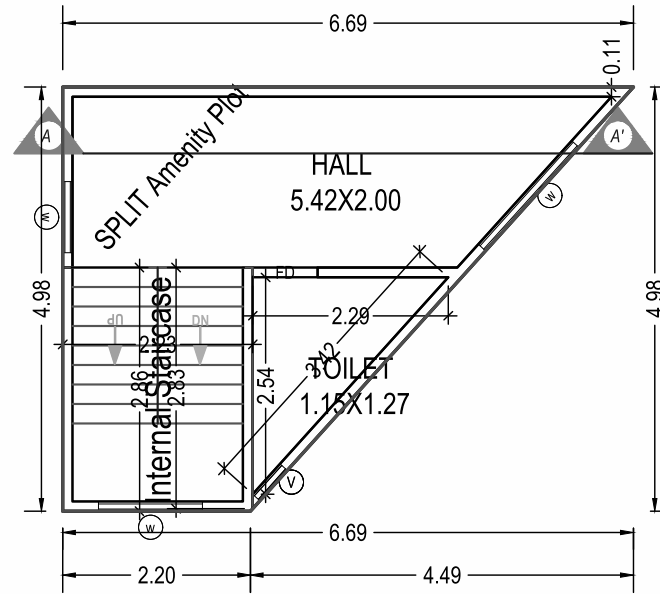


■ Terrace Floor Plan

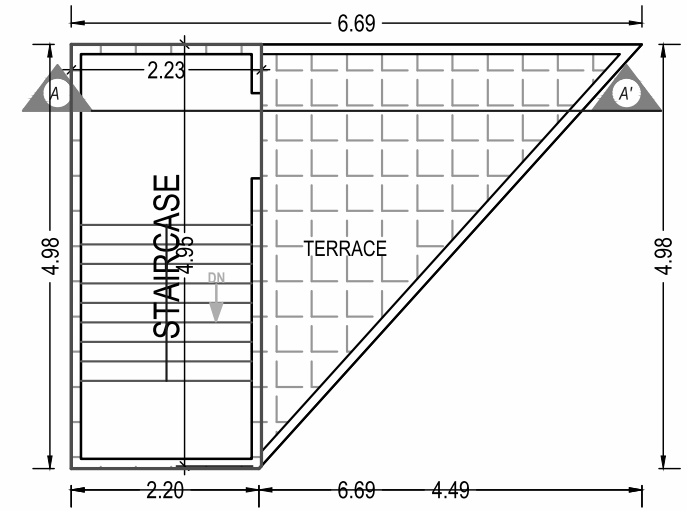
TYPE-AM



■ Ground Floor Plan



■ First Floor Plan



■ Terrace Floor Plan

Club House



Structure Specifications

STRUCTURE:

- All RCC & brick masonry work as per structural engineer's design.

FLOORING:

- Vitrified tiles & parking tiles

PAINT & FINISH:

- Interiors: Smooth plaster with wall putty & primer
- Exteriors: Double coat plaster with water proof paint

DOORS & WINDOWS:

- Doors: Elegant wooden entrance door, internal flush doors, stone frames in all doors
- Windows: Anodized coated aluminium section windows

KITCHEN:

- Granite kitchen platform with SS sink, glazed tiles dado up to lintel level

TERRACE:

- Open terrace finished with china mosaic tiles

BATHROOMS & TOILETS:

- Designer wall tiles, stone counter with ceramic wash basin
- CP Fittings & Vessels

ELECTRIFICATION:

- Concealed copper wiring of approved quality
- Good quality modular switches with sufficient electrical points as per architect's plan




WATER SUPPLY:

- 24 hours water supply through overhead & underground tank of sufficient size




Pramukh VILLA

— 3 BHK LUXURIOUS VILLA —

 **6356651000**  pramukhvilla1000@gmail.com
 Pramukh Villa, Bs. Sunny Paji Dhaba,
 Kapurai-Tarsali Highway, Vadodara.

Architect
 **ADVANCE ENGINEERS
ARCHITECTS**

Developer
 **Pramukh
BUILDCON**

Structure
 **Tarang K Galani**
(M.Tech Structure)

