

RAJHANS CREMONA

DEVELOPER: RAJHANS NUTRIMENTS PRIVATE LIMITED



 RAJHANS
CREMONA



ADJOINING C.B.PATEL HEALTH CLUB HOUSE

Landscape & Amenities

1. Entry Gate
2. Exit Gate
3. Society Office
3. Wicket Gate for Pedestrian
4. Seesaw Cabin
5. Ramp Entry
6. Ramp Exit
7. Building Entrance Foyer with Waiting Lounge
8. Banquet Hall with Lawn
9. Entrance Plaza Club
10. Club Amenities Entrance Lobby
11. Kids Theater
12. Day Care Area
13. Toddler Outdoor Play Zone
14. Kids Play Zone Corridor
15. Library
16. Skating Rink
17. Net Cricket Pitch
18. Multi-sport Court
19. Waterbody with Gazebo Seat-out Deck
20. Semi-covering Seat-out Area
21. Senior Citizen Area
22. Jogging Track
23. Lawn
24. Acupressure Garden
25. Chess Garden
26. Fragrance Garden
27. Organic Garden
28. Meditation Pavilion
29. Relaxation Zone
30. Healing Garden
31. Hedge Garden
32. Forest Zone
33. Tree House
34. Rock Climbing
35. Chess Garden
36. Vegetable-grocery & Dairy Products Store
37. Medical / Clinic Area
38. Laundry Area
39. Indoor Garden



60' WIDE MAIN ROAD



Landscape & Amenities

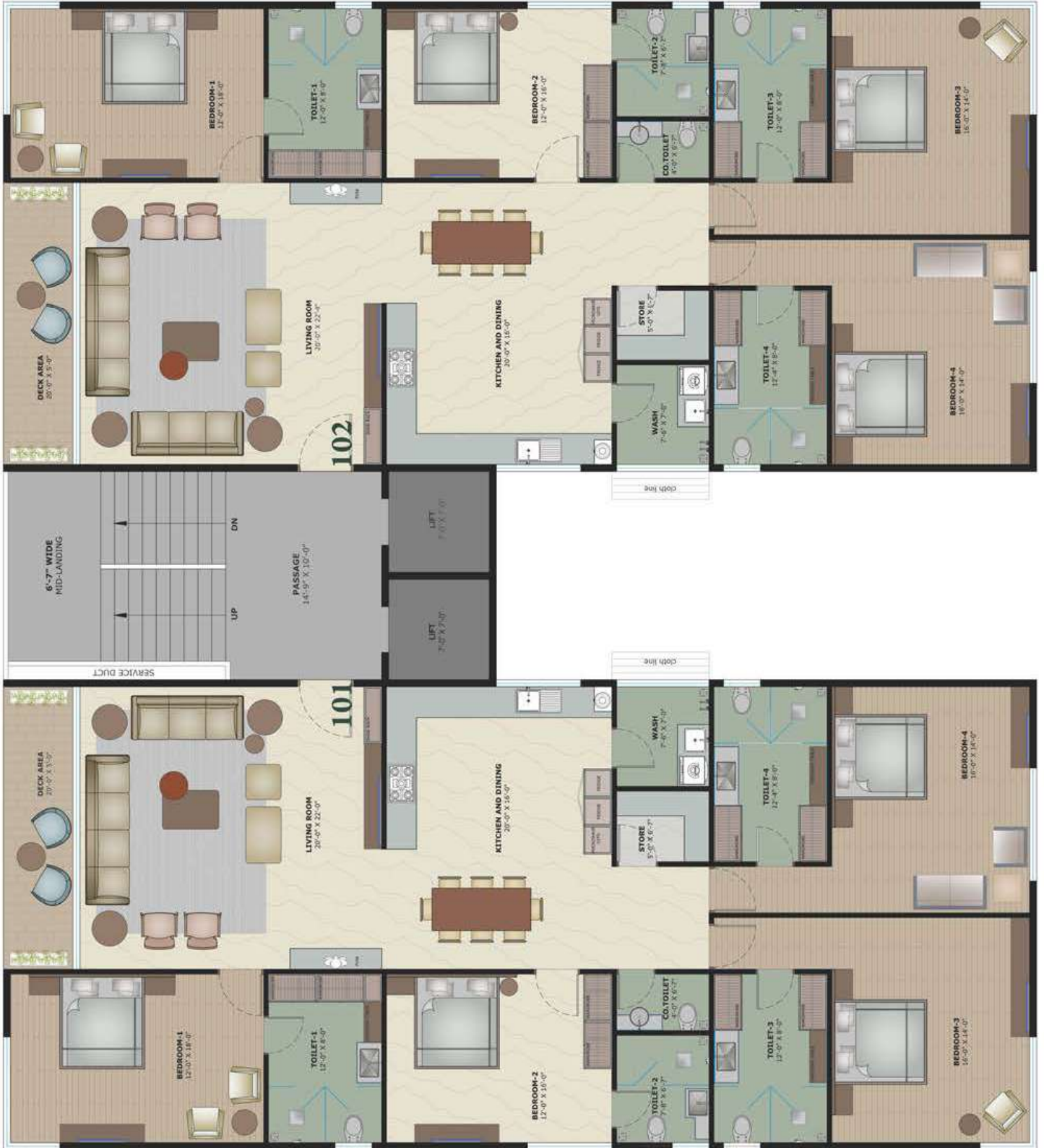
1. Entry Gate
2. Exit Gate
3. Society Office
3. Wicket Gate for Pedestrian
4. Security Cabin
5. Ramp Entry
6. Ramp Exit
7. Building Entrance Foyer with Waiting Lounge
8. Banquet Hall with Lawn
9. Entrance Plaza Club
10. Club Amenities Entrance Lobby
11. Kids Theater
12. Day Care Area
13. Toddler Outdoor Play Zone
14. Kids Play Zone Corridor
15. Library
16. Skating Rink
17. Net Cricket Pitch
18. Multi-sport Court
19. Waterbody with Gazebo Seat-out Deck
20. Semi-covering Seat-out Area
21. Senior Citizen Area
22. Jogging Track
23. Lawn
24. Acupressure Garden
25. Chess Garden
26. Fragrance Garden
27. Organic Garden
28. Meditation Pavilion
29. Relaxation Zone
30. Healing Garden
31. Hedge Garden
32. Forest Zone
33. Tree House
34. Rock Climbing
35. Chess Garden
36. Vegetable-grocery & Dairy Products Store
37. Medical / Clinic Area
38. Laundry Area
39. Indoor Garden

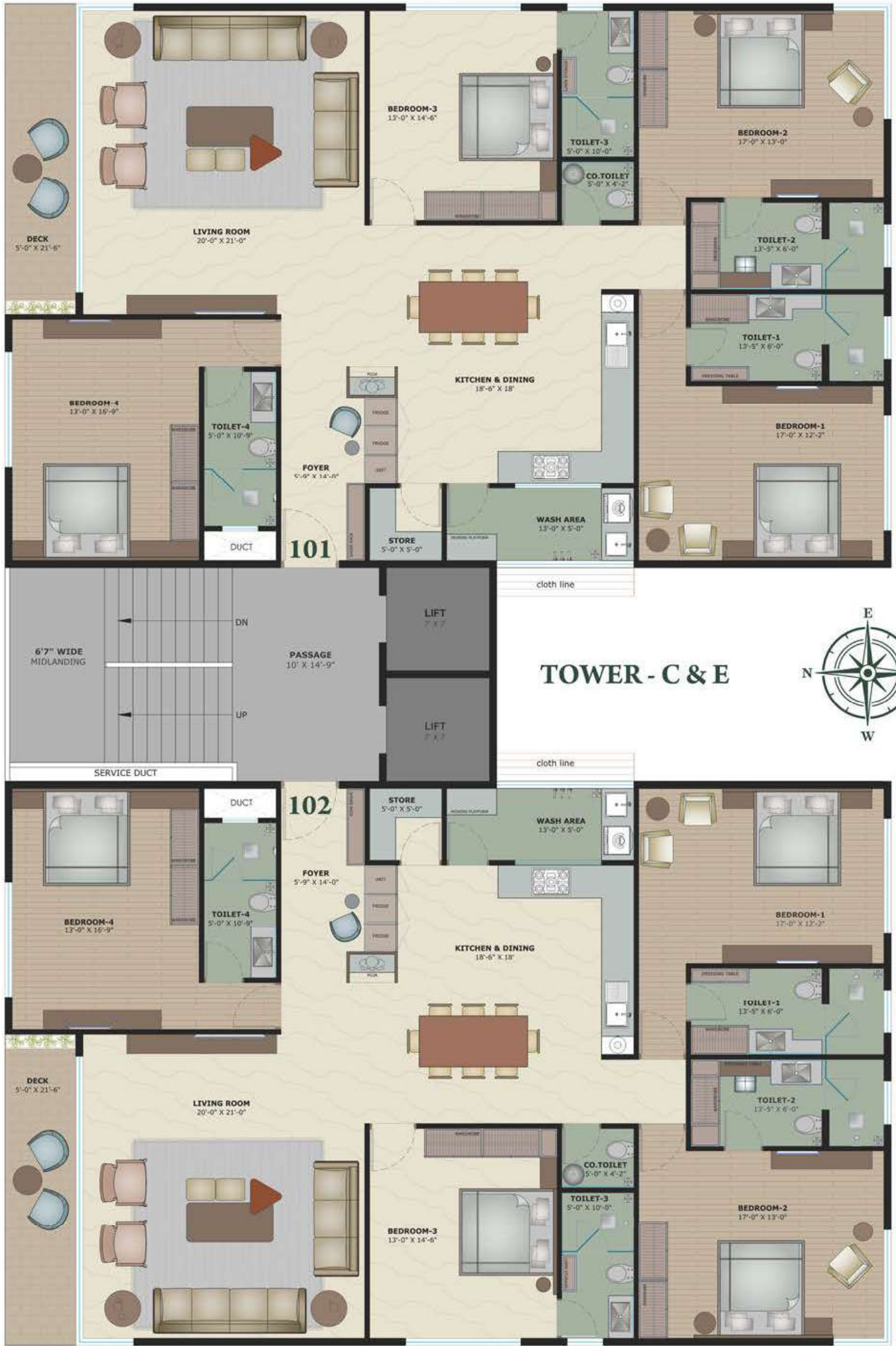


60' WIDE MAIN ROAD



TOWER A & B





TOWER - C & E



101

102

BEDROOM-3
13'-0" X 14'-6"

BEDROOM-2
17'-9" X 13'-0"

LIVING ROOM
20'-0" X 21'-0"

DECK
5'-0" X 21'-6"

BEDROOM-4
13'-0" X 16'-9"

KITCHEN & DINING
18'-6" X 18'

TOILET-2
13'-9" X 6'-0"

TOILET-1
13'-5" X 6'-0"

FOYER
5'-9" X 14'-0"

TOILET-4
5'-0" X 10'-9"

BEDROOM-1
17'-0" X 12'-2"

WASH AREA
13'-0" X 5'-0"

STORE
5'-0" X 5'-0"

DUCT

LIFT
7' X 7'

LIFT
7' X 7'

PASSAGE
10' X 14'-9"

6'7" WIDE MIDLANDING

SERVICE DUCT

cloth line

102

STORE
5'-0" X 5'-0"

WASH AREA
13'-0" X 5'-0"

FOYER
5'-9" X 14'-0"

TOILET-4
5'-0" X 10'-9"

BEDROOM-1
17'-0" X 12'-2"

KITCHEN & DINING
18'-6" X 18'

TOILET-1
13'-9" X 6'-0"

TOILET-2
13'-9" X 6'-0"

BEDROOM-3
13'-0" X 14'-6"

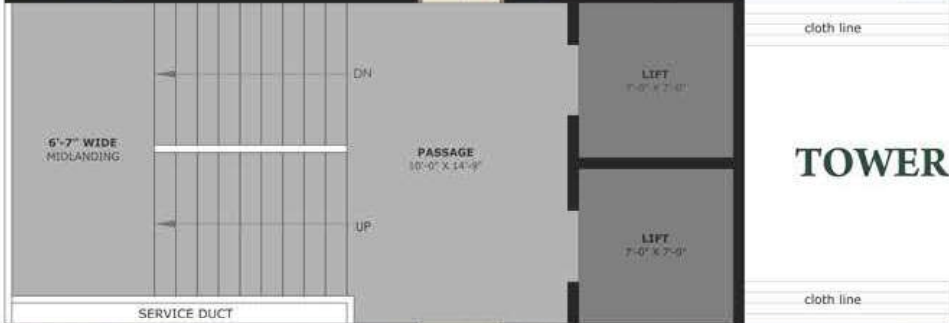
BEDROOM-2
17'-0" X 13'-0"

LIVING ROOM
20'-0" X 21'-0"

DECK
5'-0" X 21'-6"

CO. TOILET
5'-0" X 4'-2"

TOILET-3
5'-0" X 10'-0"



TOWER - D & F

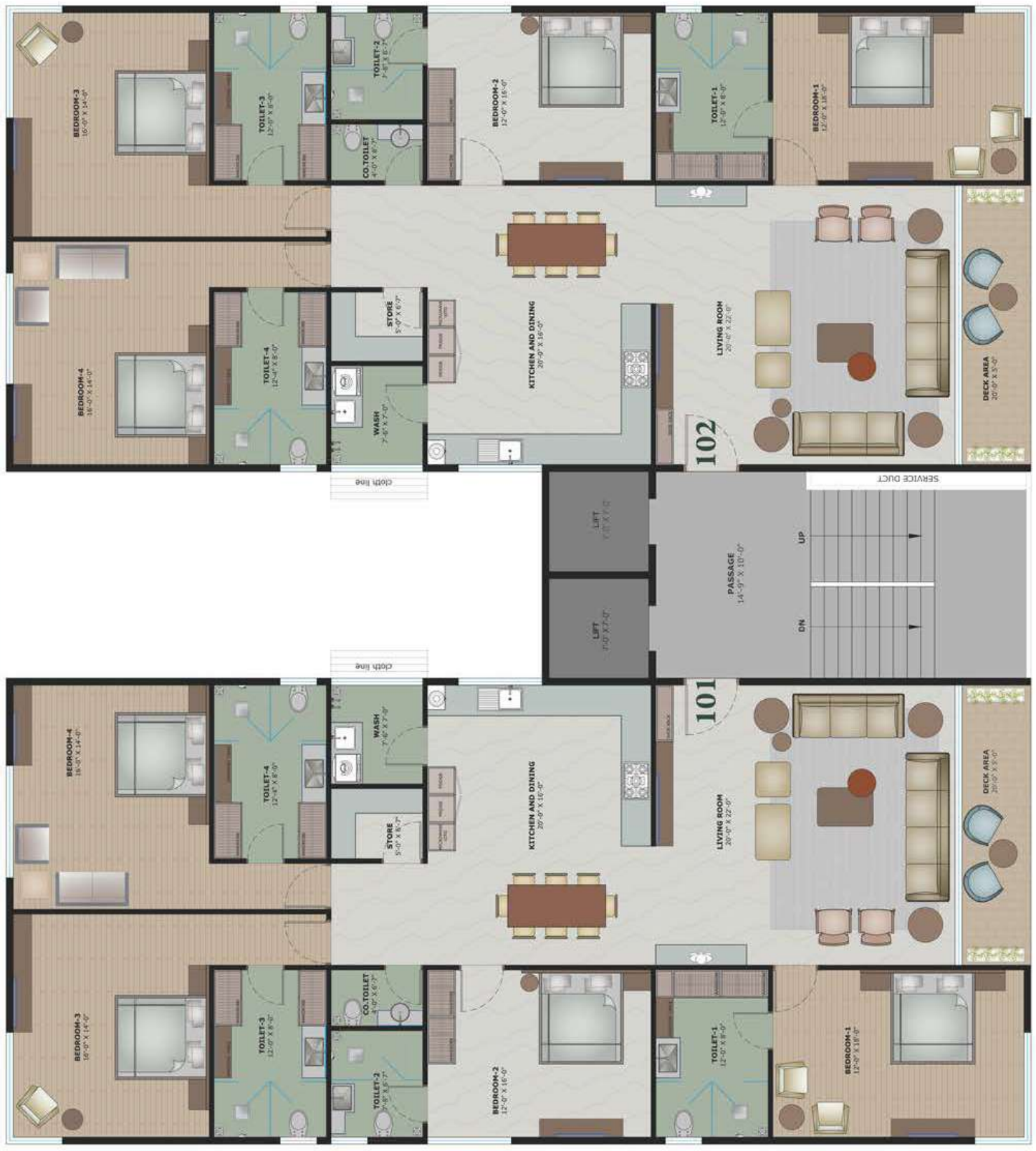




TOWER - G



TOWER - H





TOWER - I





TOWER-J



flat internal finish specifications

SR NO.	AREA DESCRIPTION	WALL FINISHES	FLOOR FINISH	DOOR SHUTTER	DOOR FRAME	WINDOW / VENTILATION SHUTTER FRAME	WINDOW / VENTILATION FRAME	AIR CONDITIONER	LOCK FITTING
1	LIVING ROOM	BIRLA PUTTY FINISH	ITALIAN MARBLE	LAMINATE FINISH FLUSH DOOR	TEAK WOOD	ALUMINIUM ANODIZED	COMPOSITE MARBLE	LEADING BRAND (TOSHIBA / MITSUBISHI OR EQUIVALENT)	NUMERIC LOGIC WITH HANDLE
2	DINING ROOM	BIRLA PUTTY FINISH	ITALIAN MARBLE						
3	KITCHEN	BIRLA PUTTY FINISH	ITALIAN MARBLE			ALUMINIUM ANODIZED	COMPOSITE MARBLE		
4	MASTER BEDROOM - 1	BIRLA PUTTY FINISH	WOODEN FLOORING	LAMINATE FINISH FLUSH DOOR	TEAK WOOD	ALUMINIUM ANODIZED	COMPOSITE MARBLE	LEADING BRAND (TOSHIBA / MITSUBISHI OR EQUIVALENT)	MOTORISE LOCK
5	MASTER BEDROOM - 2	BIRLA PUTTY FINISH	MODERN TILES	LAMINATE FINISH FLUSH DOOR	TEAK WOOD	ALUMINIUM ANODIZED	COMPOSITE MARBLE	LEADING BRAND (TOSHIBA / MITSUBISHI OR EQUIVALENT)	MOTORISE LOCK
6	MASTER BEDROOM - 3	BIRLA PUTTY FINISH	MODERN TILES	LAMINATE FINISH FLUSH DOOR	TEAK WOOD	ALUMINIUM ANODIZED	COMPOSITE MARBLE	LEADING BRAND (TOSHIBA / MITSUBISHI OR EQUIVALENT)	MOTORISE LOCK
7	BEDROOM - 4	BIRLA PUTTY FINISH	MODERN TILES	LAMINATE FINISH FLUSH DOOR	TEAK WOOD	ALUMINIUM ANODIZED	COMPOSITE MARBLE	LEADING BRAND (TOSHIBA / MITSUBISHI OR EQUIVALENT)	MOTORISE LOCK
8	MASTER BEDROOM - 1 TOILET	MODERN TILES	MODERN TILES	LAMINATE FINISH FLUSH DOOR	TEAK WOOD	ALUMINIUM ANODIZED	MODERN TILES		MOTORISE LOCK
9	MASTER BEDROOM - 2 TOILET	MODERN TILES	MODERN TILES	LAMINATE FINISH FLUSH DOOR	TEAK WOOD	ALUMINIUM ANODIZED	MODERN TILES		MOTORISE LOCK
10	MASTER BEDROOM - 3 TOILET	MODERN TILES	MODERN TILES	LAMINATE FINISH FLUSH DOOR	TEAK WOOD	ALUMINIUM ANODIZED	MODERN TILES		MOTORISE LOCK
11	BEDROOM - 4 TOILET	MODERN TILES	MODERN TILES	LAMINATE FINISH FLUSH DOOR	TEAK WOOD	ALUMINIUM ANODIZED	MODERN TILES		MOTORISE LOCK
12	COMMON - TOILET	MODERN TILES	MODERN TILES	LAMINATE FINISH FLUSH DOOR	TEAK WOOD	ALUMINIUM ANODIZED	MODERN TILES		MOTORISE LOCK
13	DECK	EXTERIOR GRADE BIRLA PUTTY FINISH	WOODEN TYPE VITRIFIED FLOORING				COMPOSITE MARBLE		
14	STORE	VITRIFIED TILES & GRANITE SHELVES	VITRIFIED TILES	LAMINATE FINISH FLUSH DOOR	TEAK WOOD				MOTORISE LOCK
15	WASH	GRANAMITE TILES	GRANITE	LAMINATE FINISH FLUSH DOOR	TEAK WOOD				MOTORISE LOCK
16	KITCHEN PLATFORM	MODERN TILES	GRANITE / COMPOSITE MARBLE TOP						

key plan strategic location



location map