



LUXURY NOW AFFORDABLE

2 BHK Apartments



FRONT VIEW



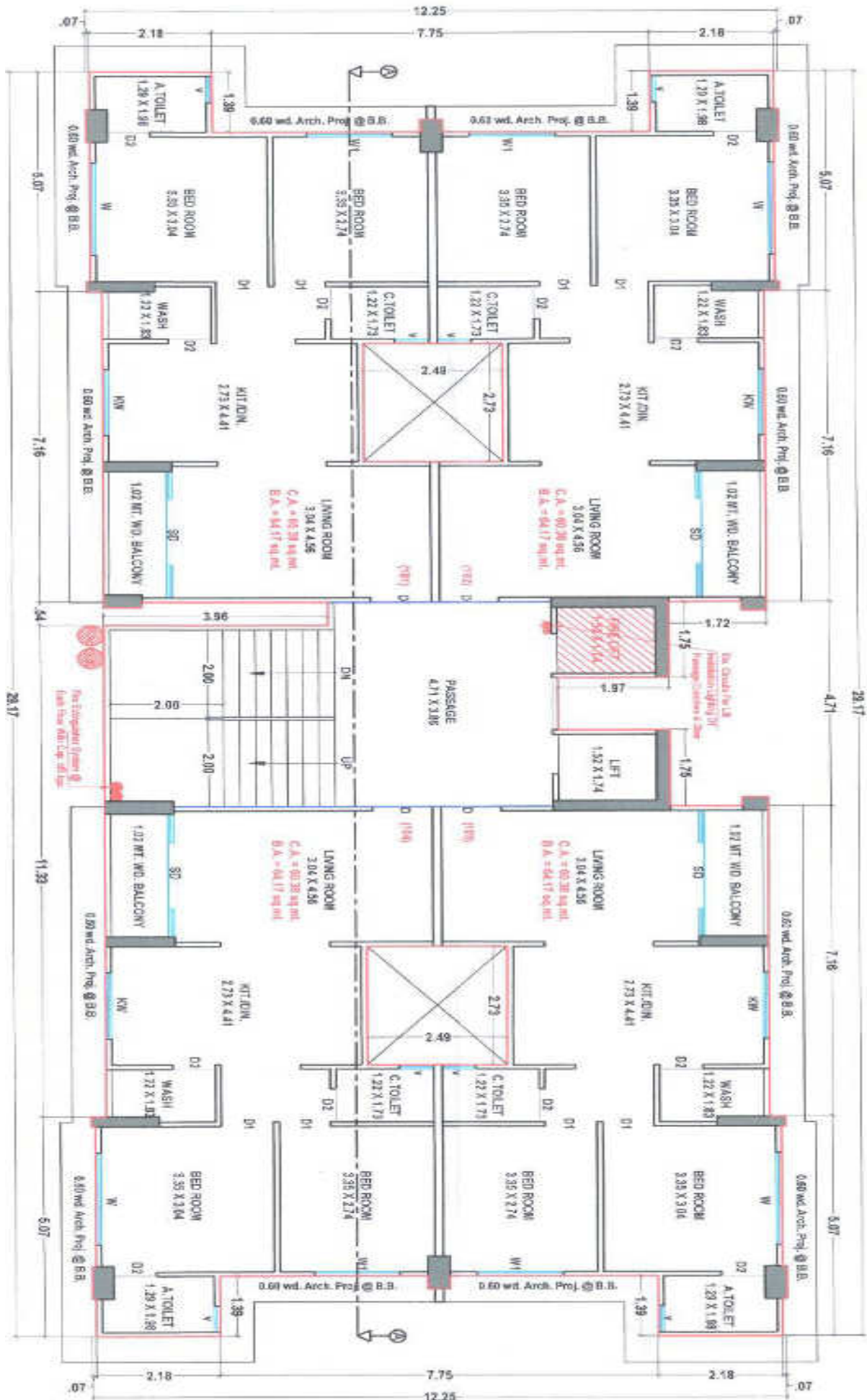
LEFT SIDE VIEW

# TYPICAL FLOOR LAYOUT PLAN

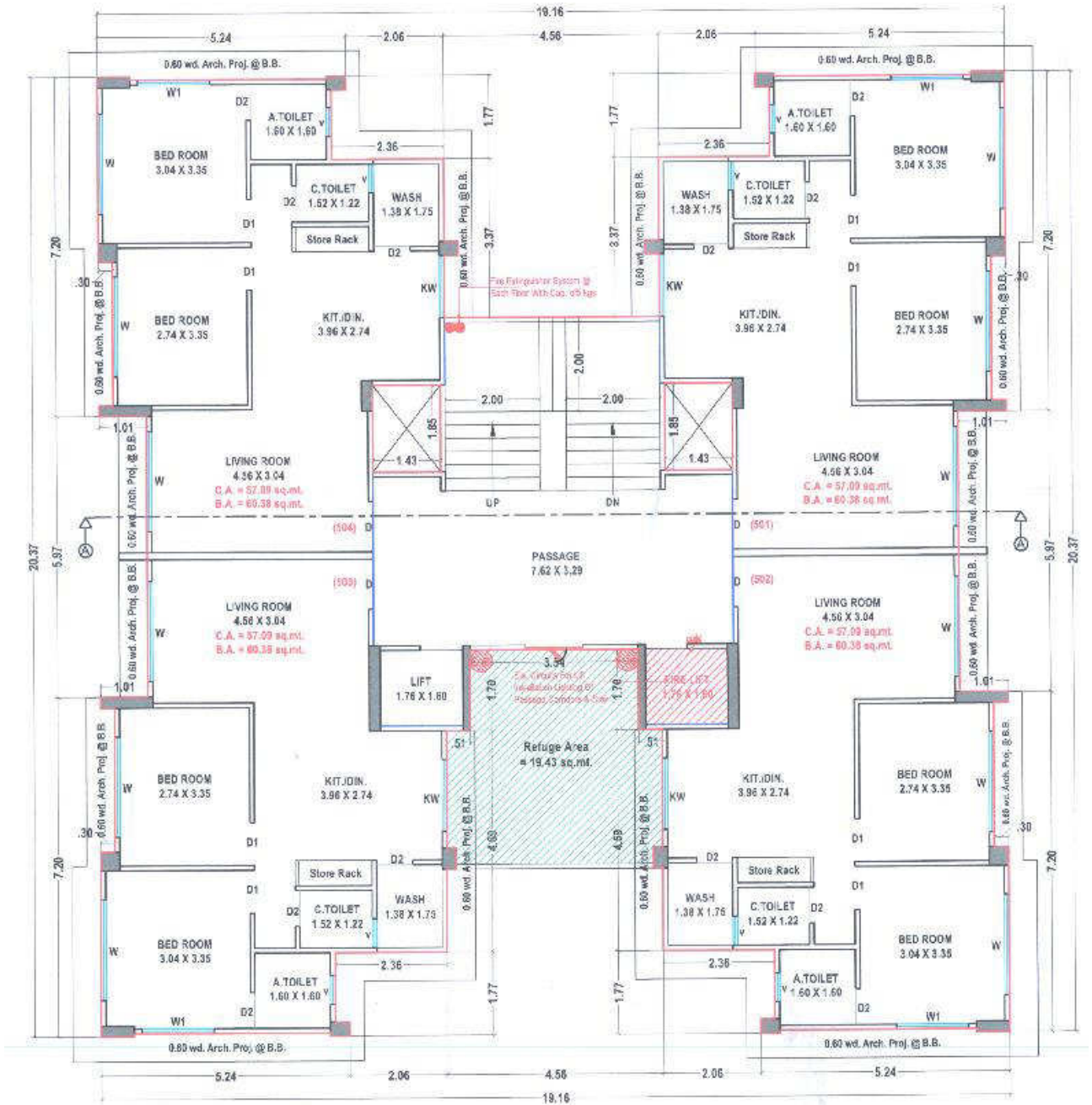


24.00 MT WIDE ROAD

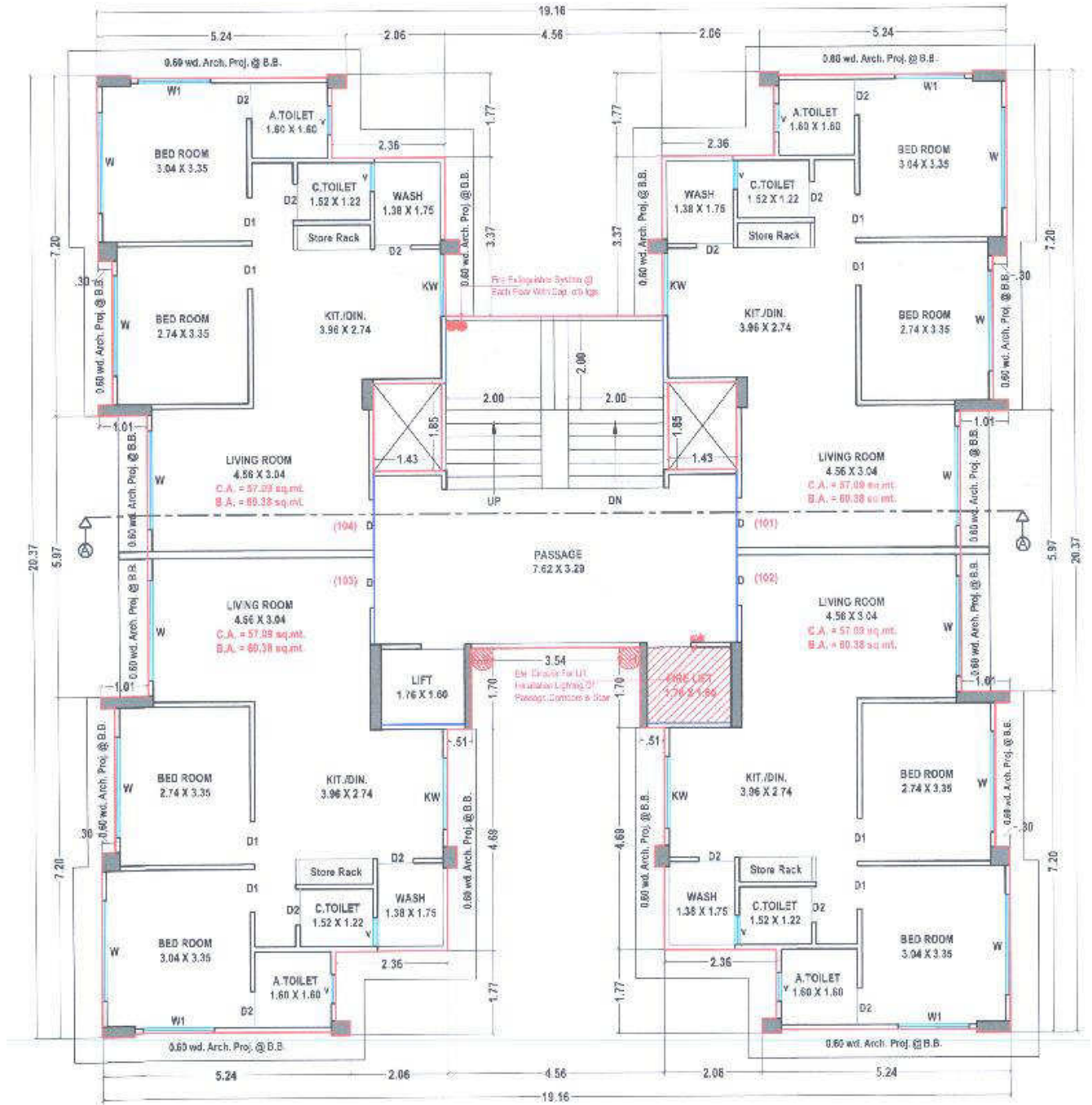




Building A – Floor 1 to 13



**Building B – Floor 5 and 8**



**Building B – Floor 1 to 4, 6, 7, 9, 10, 11, 12**





BACK SIDE VIEW





TOP VIEW

# **PROJECT SPECIFICATION**

- Earthquake resistance RCC framed structure.
- Smooth plaster with white putty finishing in interior walls
- Double coat plaster with weather shield color.
- 24"x24" vitrified tiles in bedroom.
- 32"x32" vitrified tiles in living, kitchen & dining area.
- Laminated main door with standard safety lock and fittings.
- Powder coated aluminum section windows with reflective glass.
- Concealed plumbing with C.P. fitting.
- S.M.C. water supply with UG & OH water tank.
- Borewell with pump.
- Sufficient points in concealed wiring of ISI company.
- C.C.T.V surveillance system and intercom facility.
- Fire and safety equipments as per norms.
- Safety grill in windows.
- Standard ISO quality auto door elevators with 6 person capacity.
- Loanable title clear project.

**Project name: THE CAPITAL**

**Developer: CAPITAL CORP**

**Address: The Capital, Opp. Rajhans Stadium  
Plaza, Palanpore, Surat – 395009**

**Contact: 8141977877**

**RERA No.: Applied For.**



