

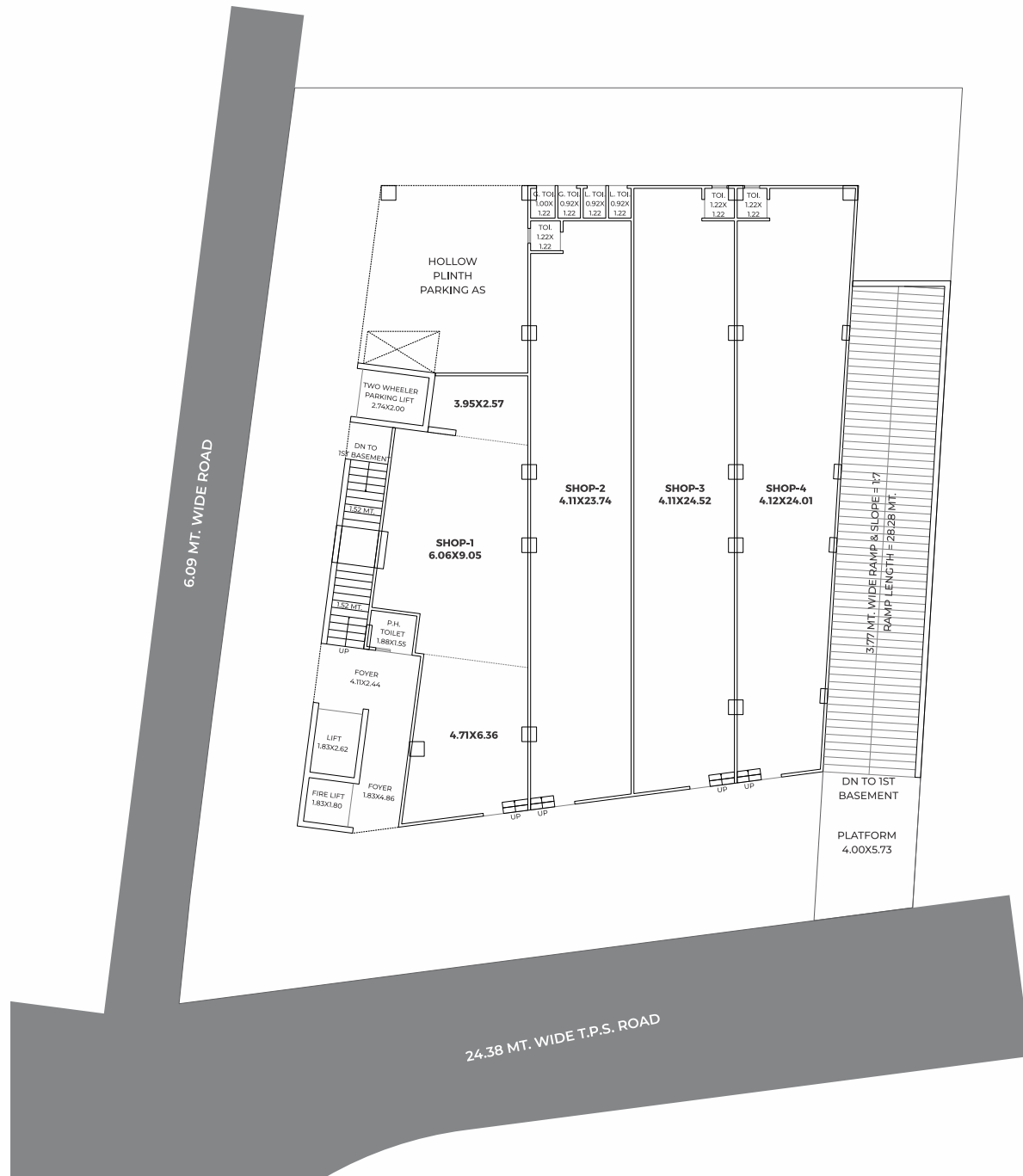
The logo for 'TRIVIA ONE' is presented on a dark red rectangular background. On the left side, there is a white graphic consisting of three rectangular blocks: a horizontal bar at the top, and two vertical bars below it, one on the left and one on the right. To the right of this graphic, the word 'TRIVIA' is written in a bold, white, sans-serif font. Below 'TRIVIA', the word 'ONE' is written in a larger, bold, white, sans-serif font.

PROJECT BY  **ARC**
INFRASTRUCTURE





GROUND FLOOR



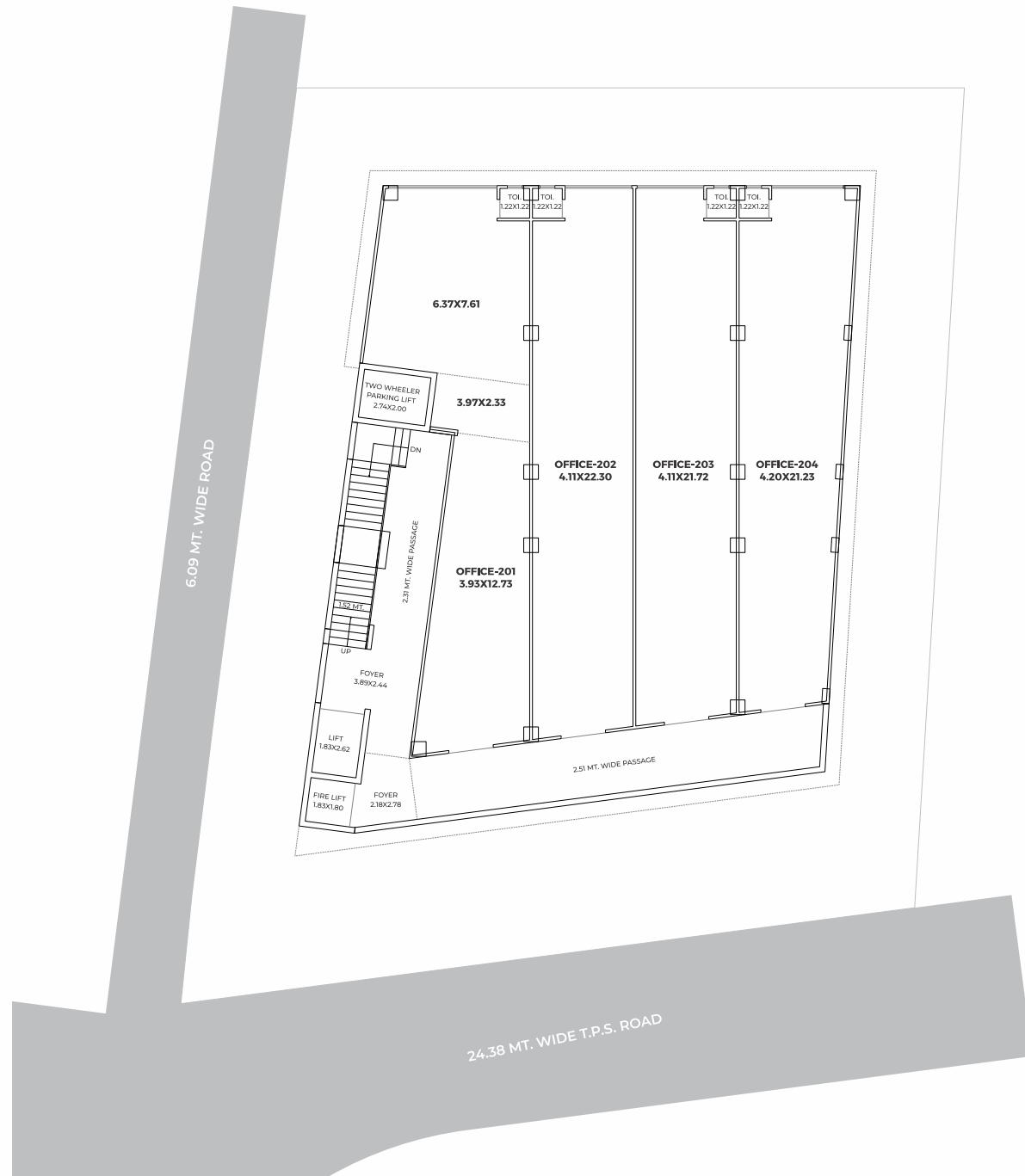


1ST FLOOR



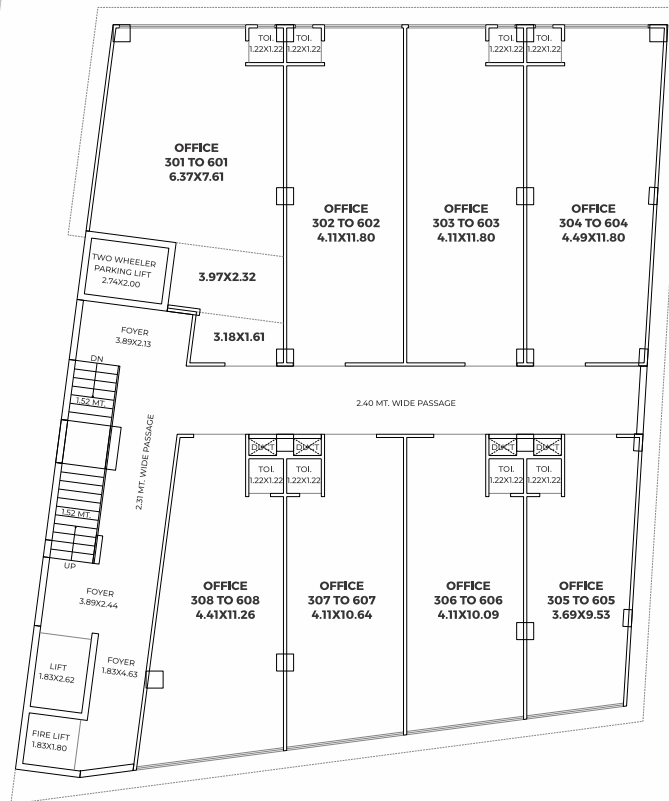


2ND FLOOR



3RD TO 6TH FLOOR

6.09 MT. WIDE ROAD

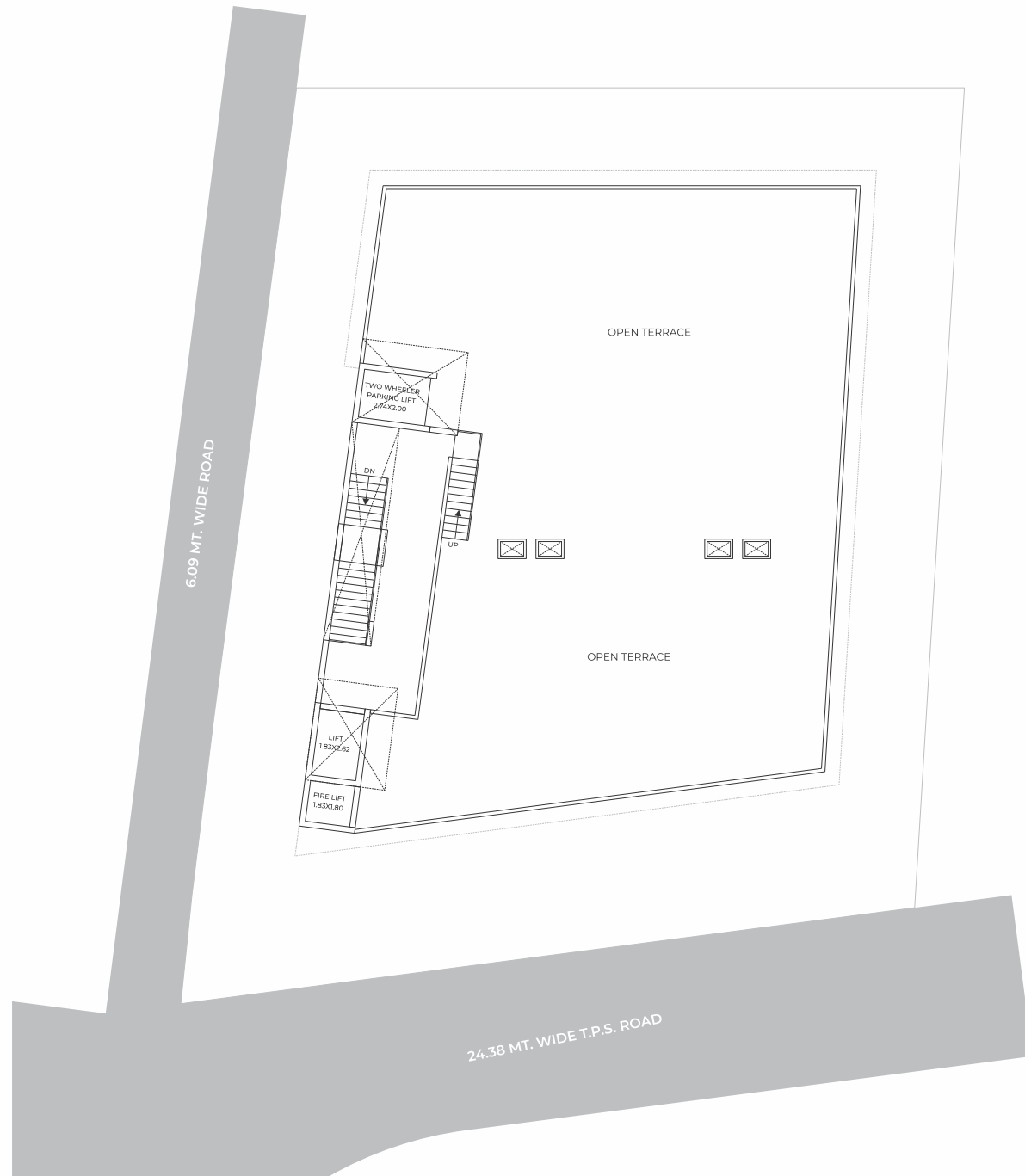


24.38 MT. WIDE T.P.S. ROAD



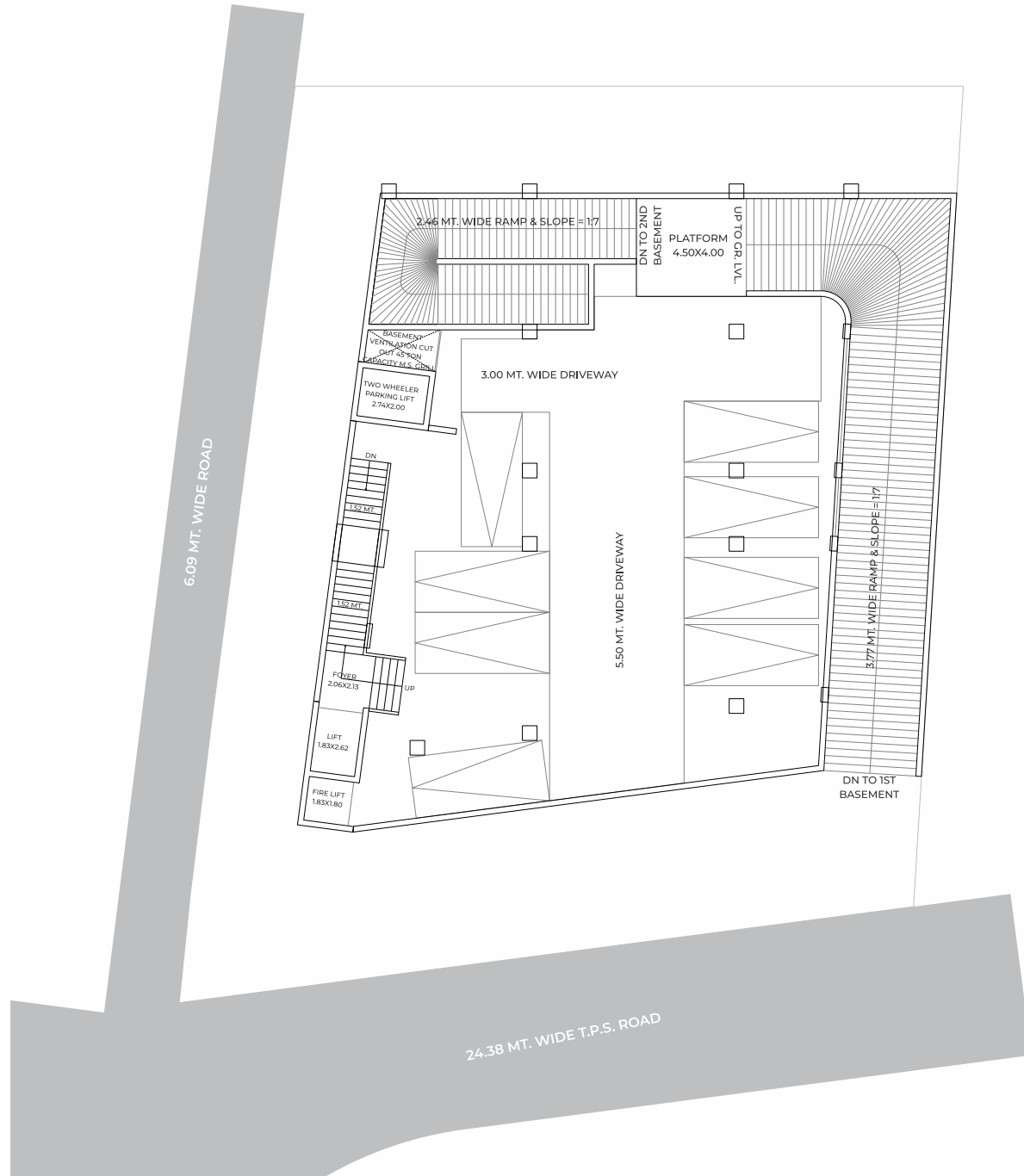


TERRACE FLOOR

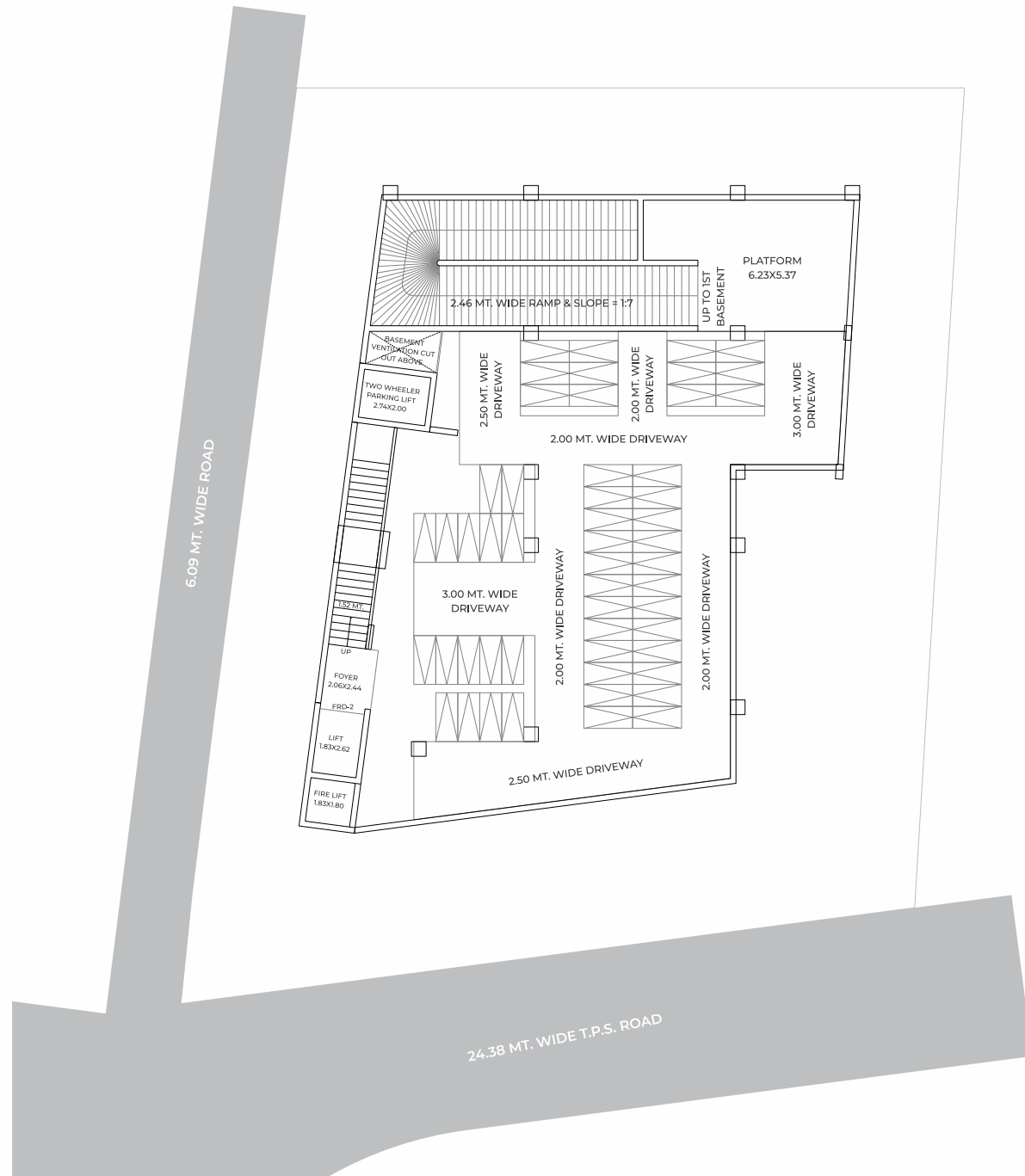




BASEMENT - 1



BASEMENT - 2





SPECIFICATIONS

Flooring:

- Vitrified flooring in entry passage area

Parking:

- Visitor parking in front side of the complex

Washrooms:

- Glazed/ceramic tiles dado up to lintel level, anti skid floor tiles

Doors:

- Laminate finished flush door with wooden/stone frame

Finishes:

- Double mala coat or polymer textured on external walls, single coat mala plaster on internal walls

Safety:

- Fire alarm, sprinkler system

Plumbing:

- UPVC water supply pipes

Paint:

- Internal-putty finish, external-Apex/Acrylic/Textured

Windows:

- Heavy gauge aluminum sliding windows with high performance glass

Electrification:

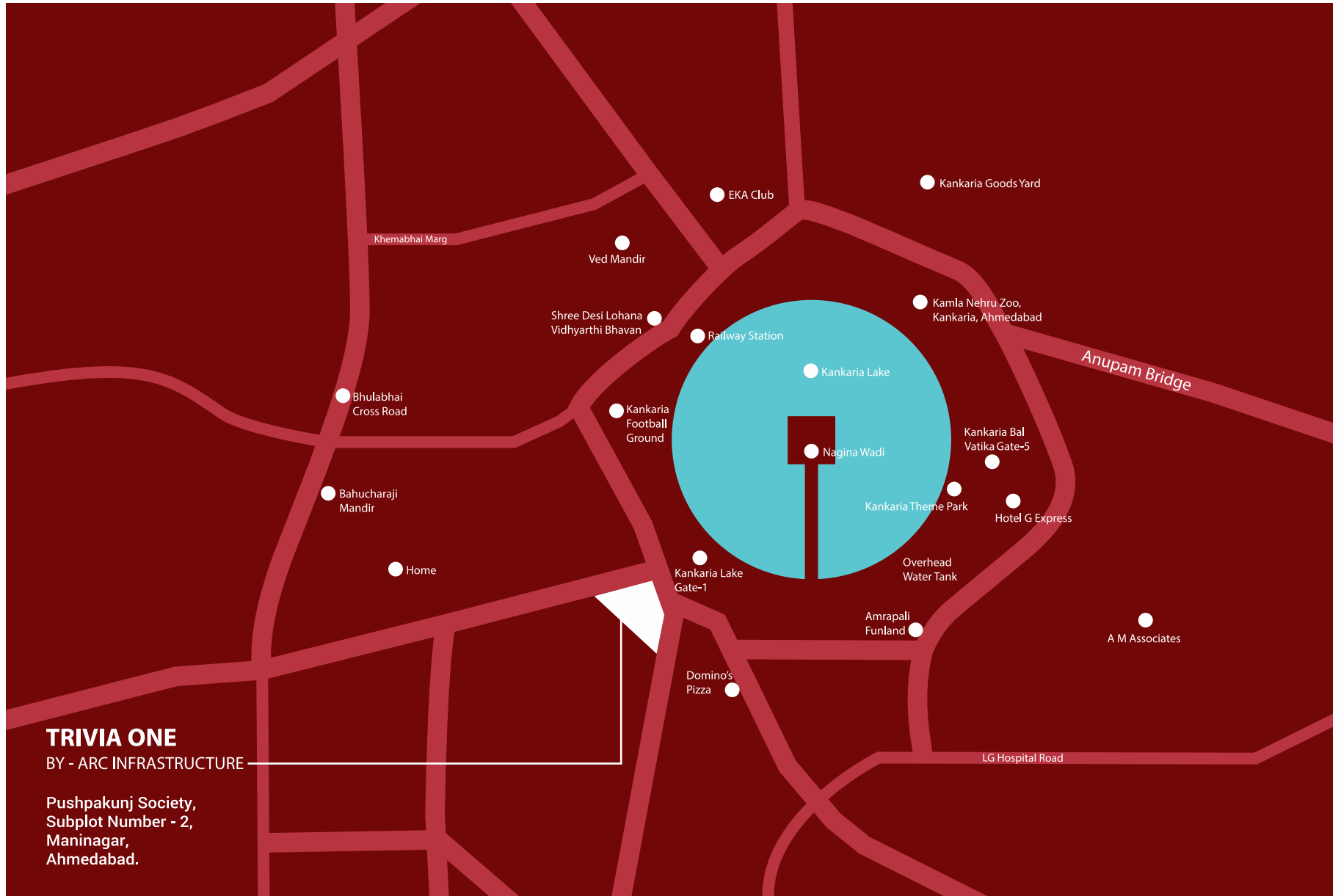
- 3 Phase concealed electric copper wiring premium modular switches







KEY PLAN



TRIVIA ONE

BY - ARC INFRASTRUCTURE

Pushpakunj Society,
Subplot Number - 2,
Maninagar,
Ahmedabad.

CONTACT: +91 97261 02910

PROJECT RERA NO. _____

_____ www.gujrera.gujarat.gov.in

DEVELOPER



MEP CONSULTANT



STRUCTURE

