

IT'S NOT ABOUT  
THE BUILDING.  
IT'S ABOUT WHO  
LIVES IN IT.

Union  
RESIDENCY



Union Residency... with its beautifully landscaped gardens and exquisite planning which blends the indoors and outdoors, is designed to be a heaven for the whole family.

**UNION RESIDENCY** Promising Luxury... Relaxation... Rejuvenation...



### SITE PLAN

Spacious and ample parking  
sufficient garden area adjoining each tower  
Parking provision of  
3 cars covered parking per flat





**B-BLOCK GARDEN VIEW**



**C-BLOCK GARDEN VIEW**

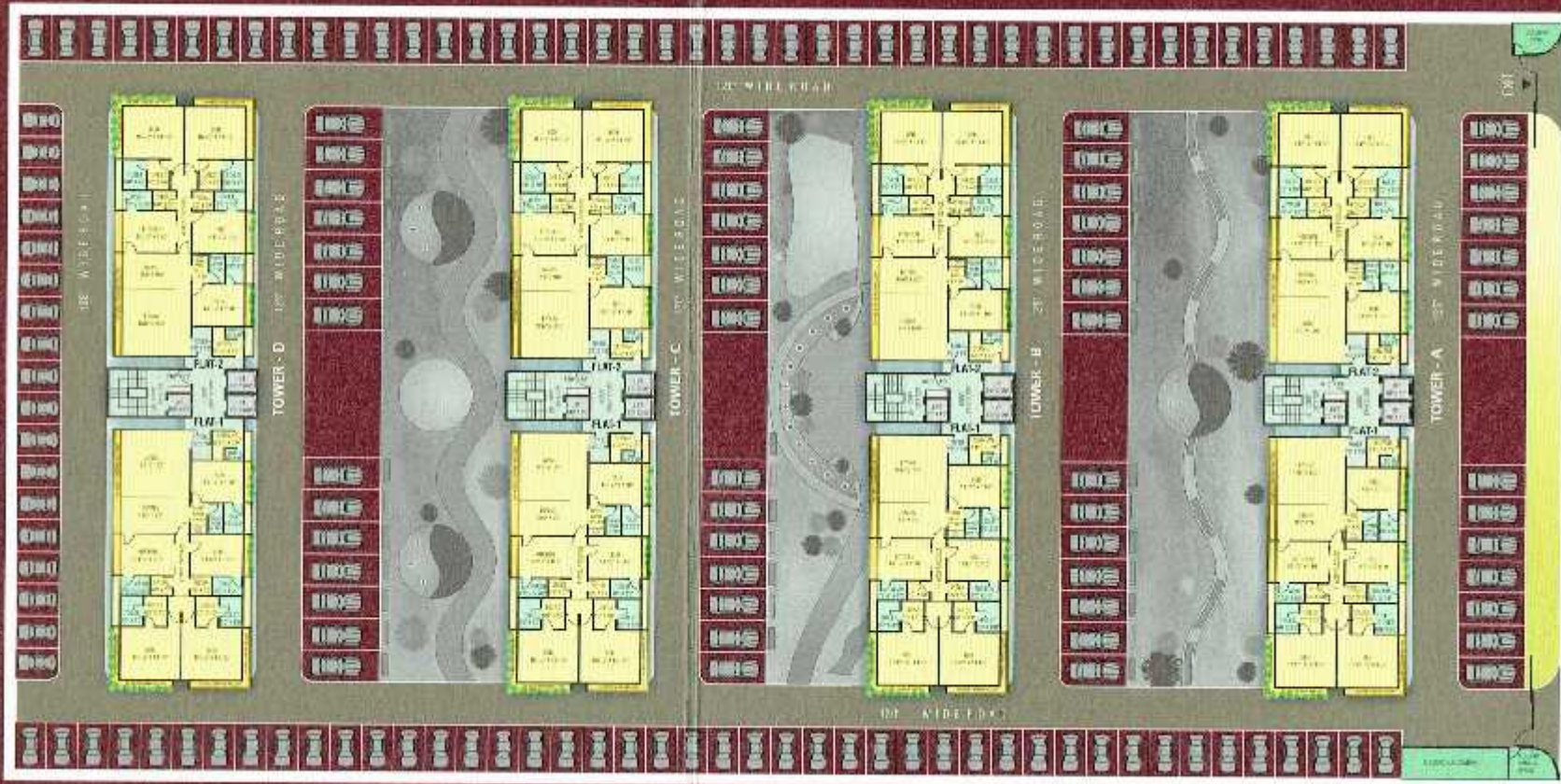


**D-BLOCK GARDEN VIEW**

### TYPICAL FLOOR PLAN WITH PLOT

2 exclusive passenger lifts and  
1 service lift of Kone-Schindler  
make for each tower.

Generator for power back up  
for full lighting load.



1000 MT. WINE ROAD



- TYPICAL FLOOR PLAN**
- State of art bathrooms with exclusive sanitary ware and tiles
  - Elegant kitchen platform in granite with wall dado in vitrified tile
  - Provision for CCTV camera and intercom facilities
  - Gas geysers in each flat and provision for 2 gas connections per flat
  - Flush laminate doors and aluminium anodized windows with full glass



Italian marble flooring for the Living room, wooden flooring for the Master Bedroom and all other areas in vitrified tiles

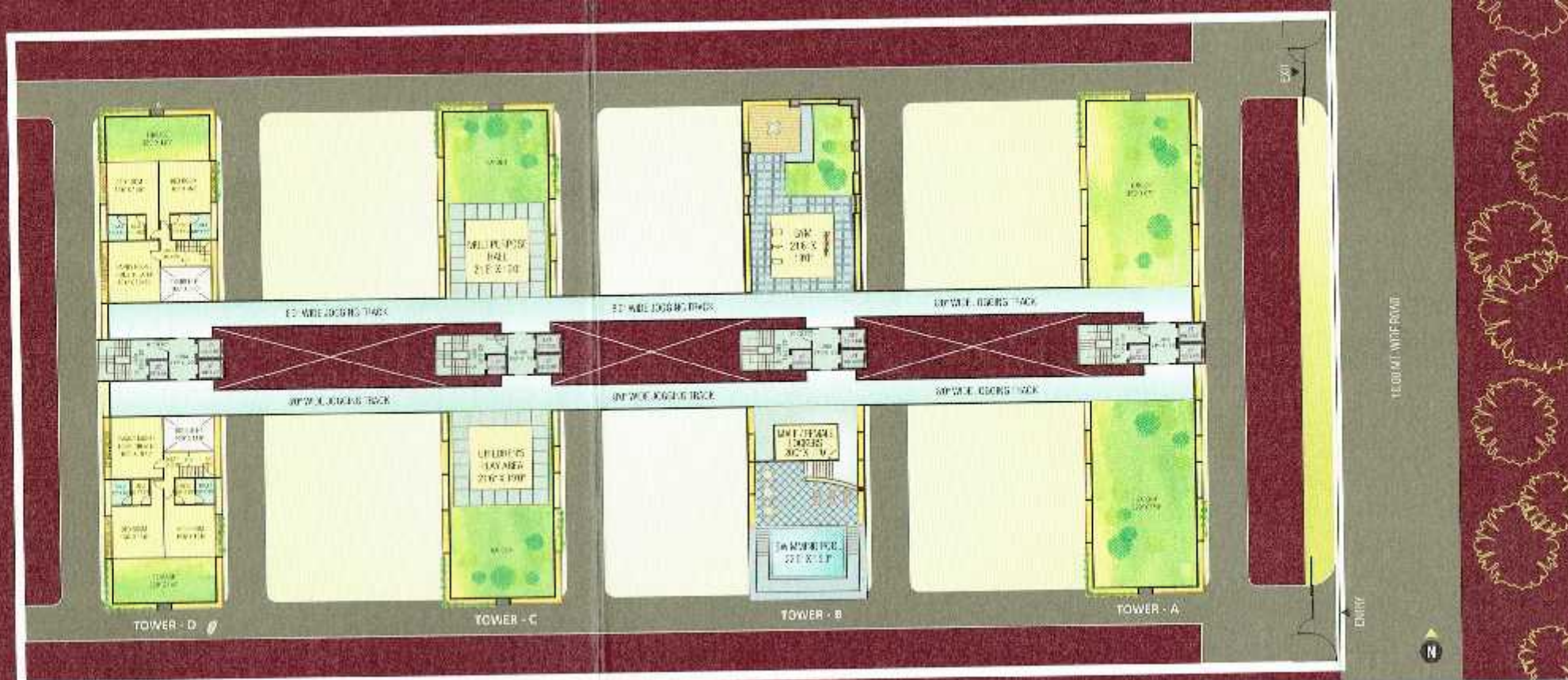


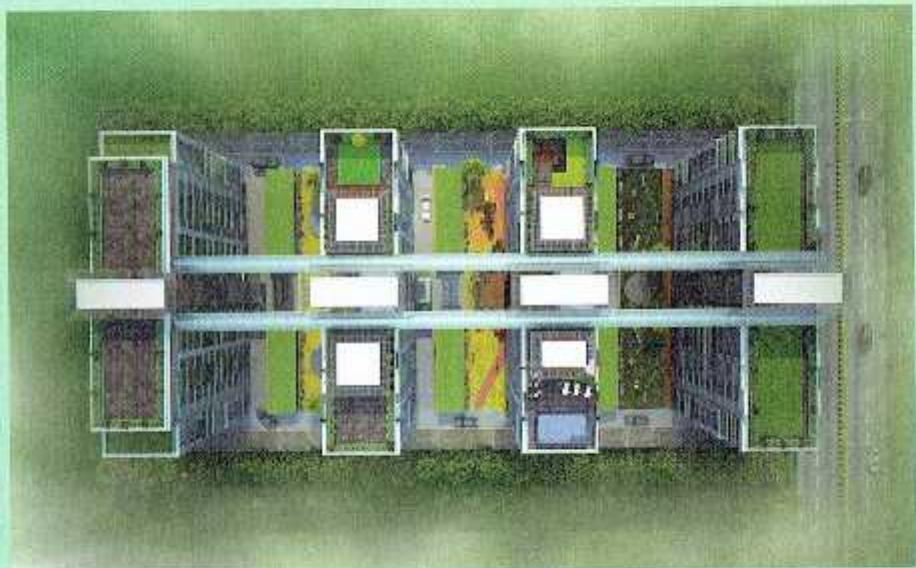
Split Air Conditioning for Living, Dining and all Bedrooms



### ELEVENTH FLOOR LEVEL PLAN

Housing the Swimming Pool, Gymnasium and Indoor Game Zone





Unique jogging track at 11th floor level which forms a Sky Bridge that connects all the towers



## EXPERIENCE THE UNEXPECTED



Common amenities like Swimming pool, Gymnasium and Indoor games area are also at the 11th floor level





Contemporary Hi-tech elevation with Glass and Aluminium

Entrance for individual tower Luxurious Reception Lobby in all towers



Secured Gated community with separate entry and exit gates



THERE IS NEVER A SECOND CHANCE  
FOR FIRST IMPRESSION





CONVENIENT LOCATION... SERENE ENVIRONMENT... LUXURIOUS HABITAT...



DEVELOPERS  
**SUMANGAL GROUP  
KANSAL GROUP**

ARCHITECT  
**NIMISH CHOKSI ARCHITECTS**

STRUCTURAL DESIGNER  
**BIMAL JARIWALA & ASSOCIATES**