



DEVELOPER: DAXON REALTY LTD

ADDRESS:  
VR Skyline, Bh. Nysa Skydale, Chhani 391740

PH.:+917574881881

E: [skyline@vrinfraspace.com](mailto:skyline@vrinfraspace.com) • W: [www.vrinfraspace.com](http://www.vrinfraspace.com)

ARCHITECT :



STRUCTURE:



RERA NO.:

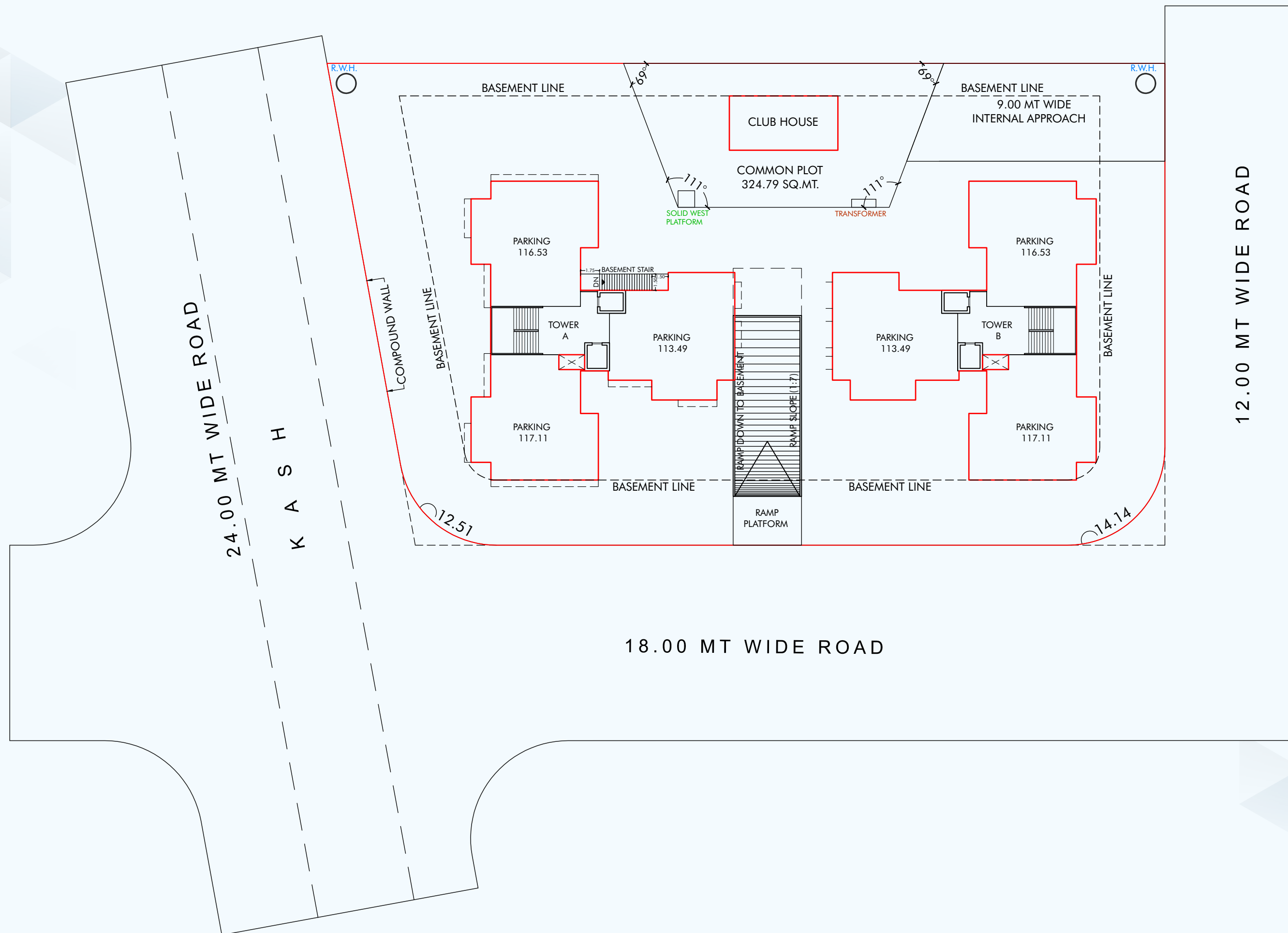
| W: [www.gujrera.gujarat.gov.in](http://www.gujrera.gujarat.gov.in)



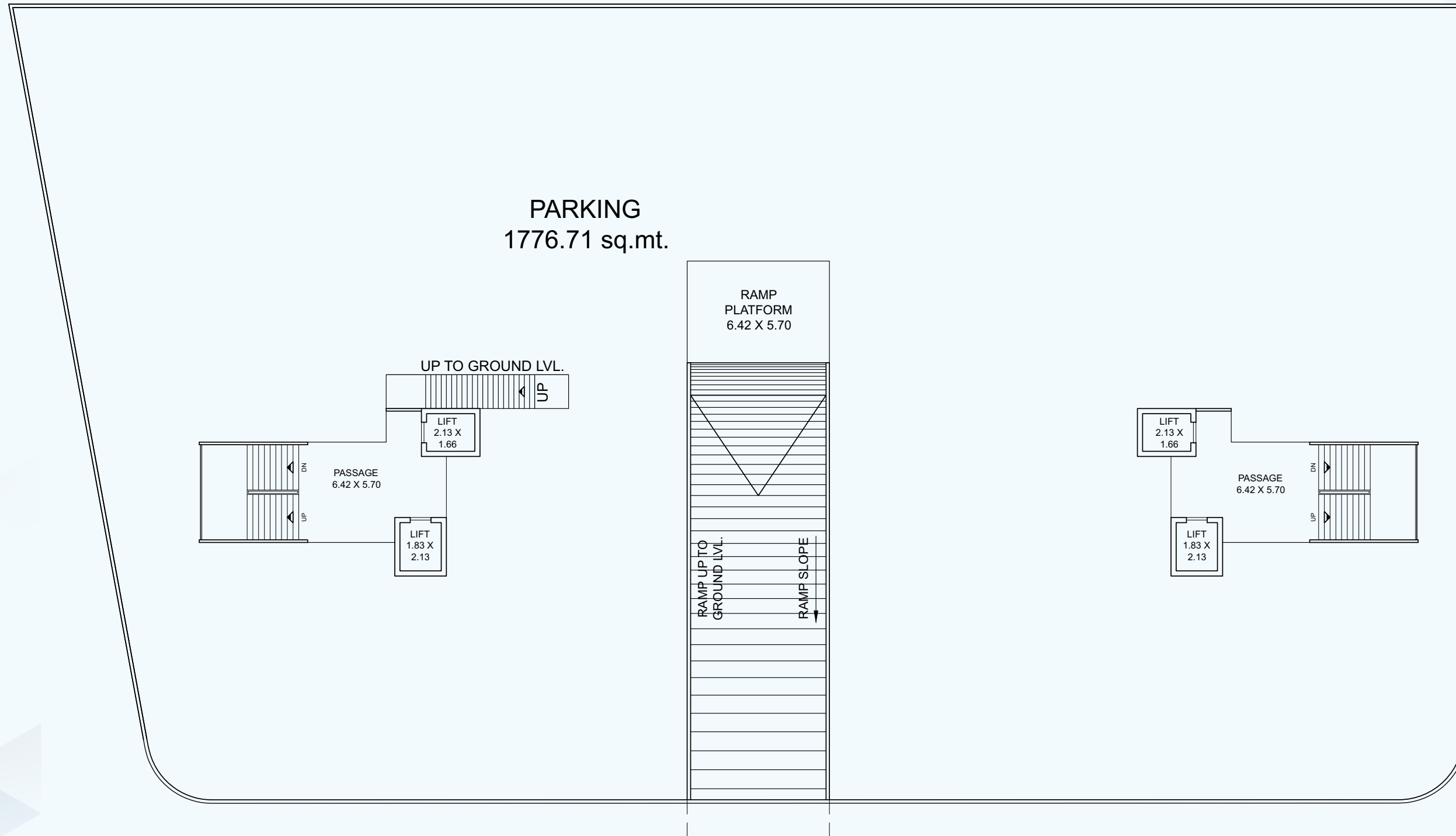
WHERE  
SKYSCRAPERS  
TOUCH  
THE HEAVENS



# LAYOUT PLAN

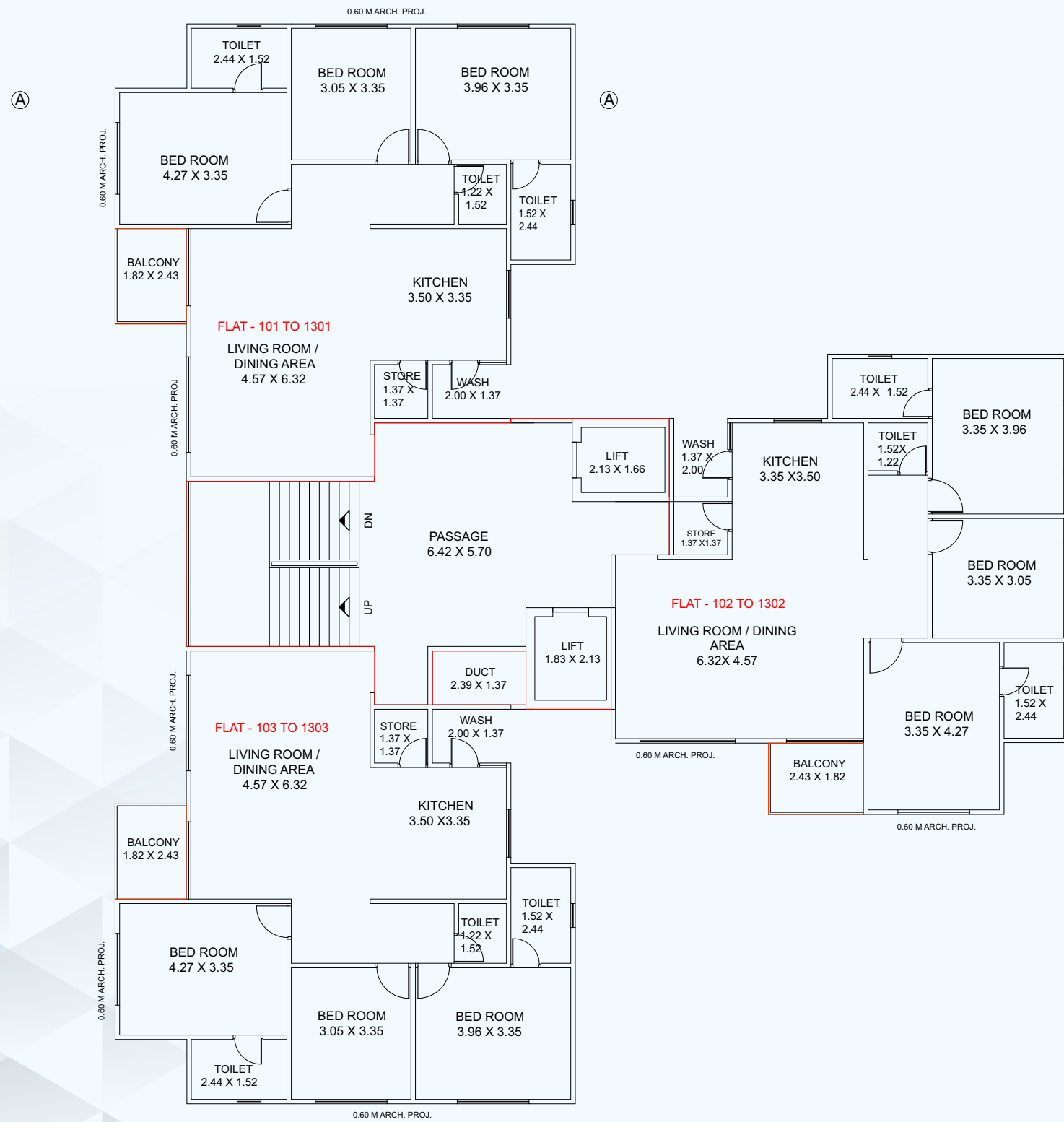


# BASEMENT PLAN

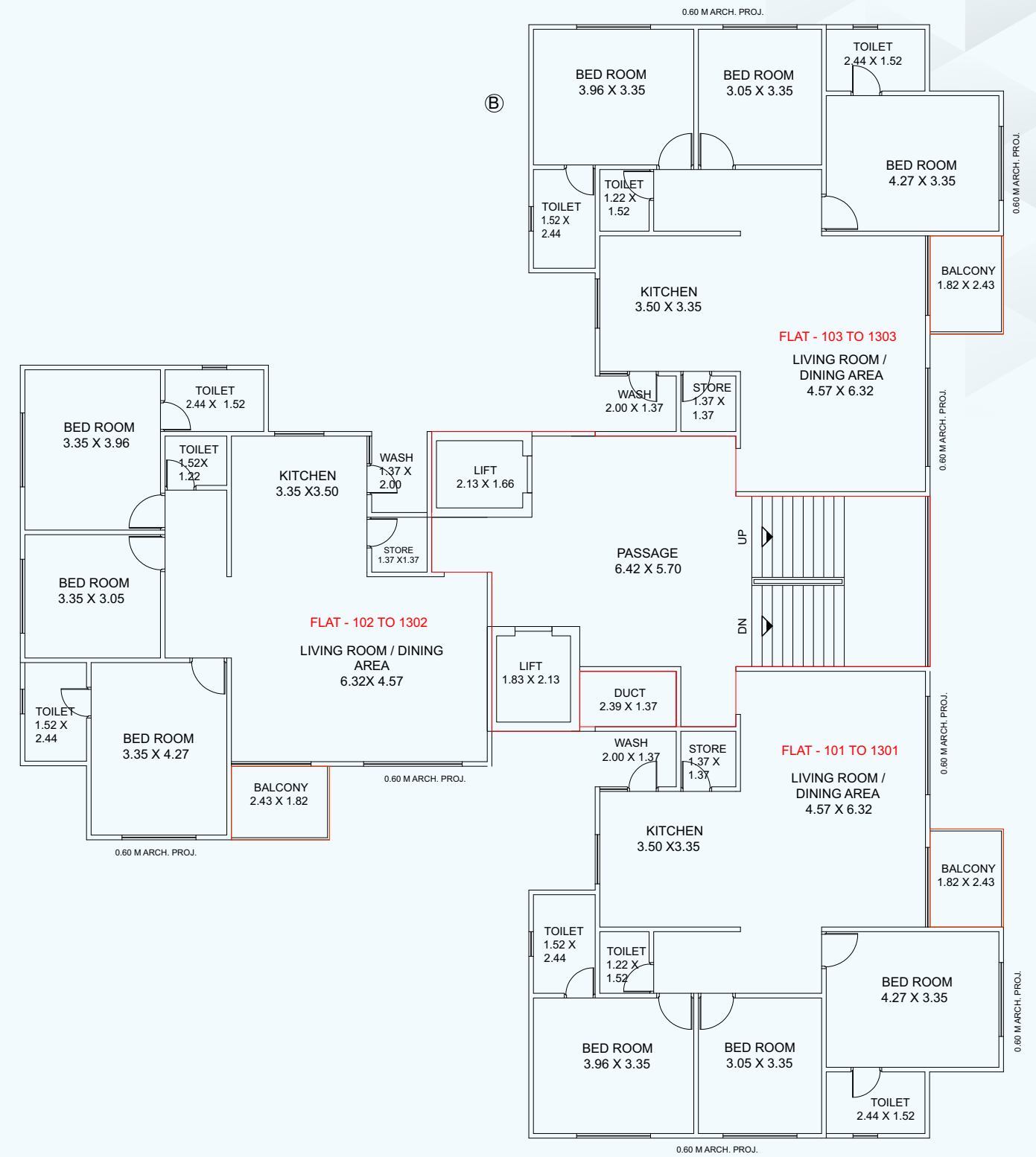




# TOWER- A TYPICAL FLOOR PLAN (1st TO 13th)

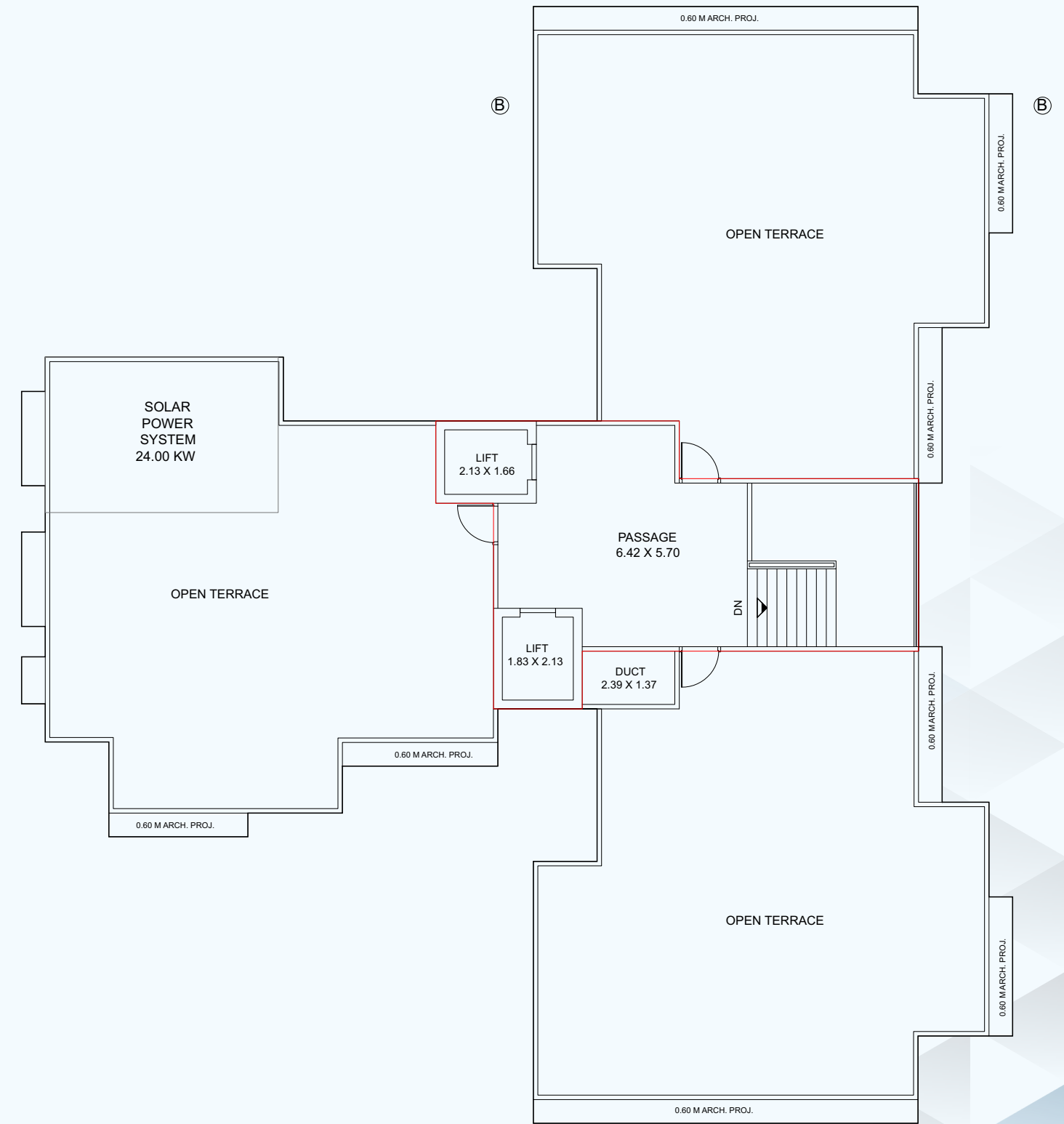
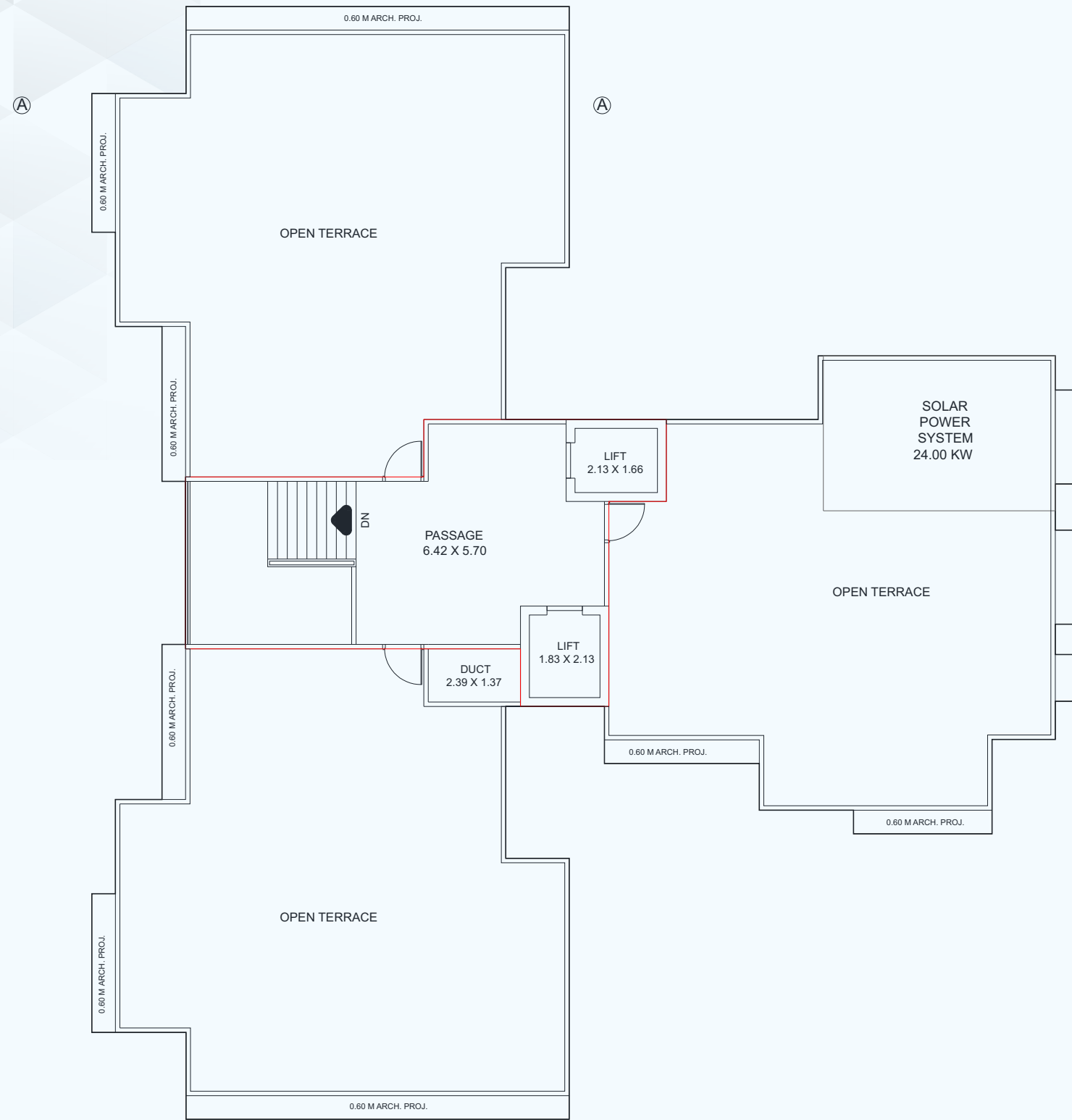


# TOWER- B TYPICAL FLOOR PLAN (1st TO 13th)



# TOWER- A TERRACE PLAN

# TOWER- B TERRACE PLAN





## SPECIFICATION

### STRUCTURE

- Earthquake Resistance R.C.C. frame structure with AAC block Masonry Partitions

### WALL FINISH

- Internal gypsum plaster with primer

### FLOORING

- 2X2 vitrified tiles in all rooms

### KITCHEN

- Natural granite platform with S.S. sink
- Good quality ceramic tile dado above platform

### TOILETS

- Premium quality C.P. Fittings and sanitary ware

### DOORS

- Decorative Main Door with Standard Safety Lock and Fitting
- Internal Door: Laminated Flush Doors

### WINDOWS

- Good Quality Powder Coated Aluminium Sliding Window

### ELECTRICAL

- ISI grade concealed wiring with premium quality

## AMENITIES



PARKING



COMMON PLOT



LIFT