



Fortune Park
live amidst nature...

A Project By
R.D. Developers



Unmatched Elegance, Unrivalled Comfort.

Fortune Park is an epitome of luxury and elegance, offering a perfect blend of simplicity and natural living. The 1 BHK & 2 BHK flats are designed to showcase the beautiful natural surroundings, providing a peaceful and calming atmosphere that is perfect for relaxation.

The **VVCMC-approved** building no. 2 has been planned to offer a tranquil and serene atmosphere, with ample natural light and ventilation to enhance the living experience. The design incorporates modern amenities and features, while also focusing on sustainability and energy efficiency.

Located in a friendly neighborhood, the complex is graced with outstanding features, offering unmatched comfort and convenience. It is an ideal choice for those seeking a luxurious lifestyle amidst natural beauty.

Come, experience the epitome of luxury living at Fortune Park.



Project Amenities



Fire Fighting Equipment



Generator Backup



24X7 CCTV Surveillance



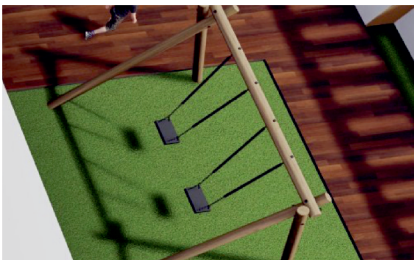
RoofTop Amenities



Branded Elevators



Car Parking



Kids Play Area



Senior Citizen Area

Flat Amenities

Living Room



- ◆ Main door with modern fittings and laminates finish.
- ◆ POP false ceiling
- ◆ Led Panel Lights.
- ◆ Vitrified Flooring.
- ◆ Mosquito Net.

BED ROOM



- ◆ Ac point provision in bedrooms.
- ◆ Mosquito Net.
- ◆ Vitrified flooring.
- ◆ Door with modern fittings & laminate finish.

Kitchen



- ◆ Well design Semi Modular kitchen with fine finish granite parallel platform.
- ◆ Stainless steel trolleys with stainless steel sink.
- ◆ Designer tiles in kitchen.
- ◆ Provision for washing machine, water purifier & fridge.

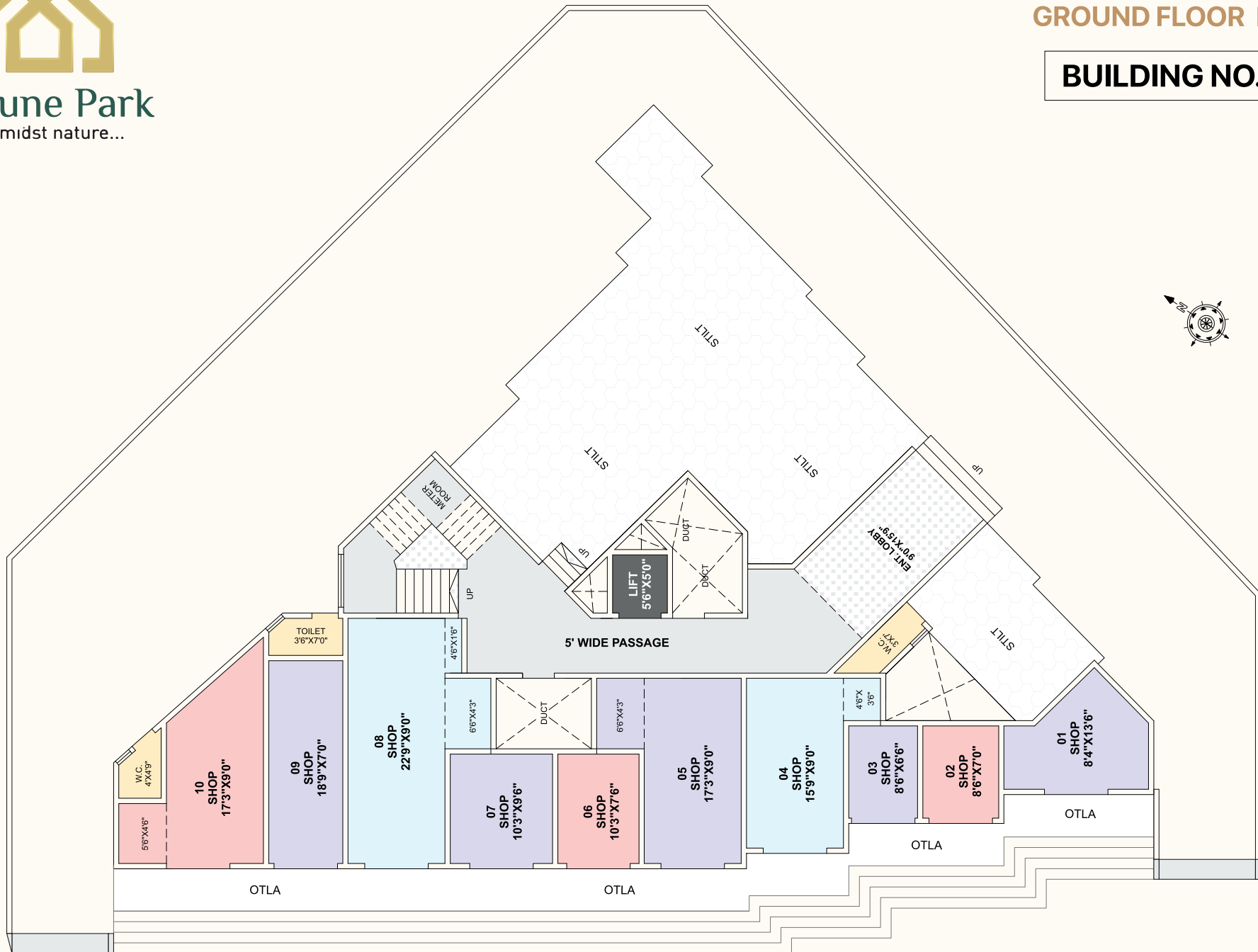
TOILET



- ◆ Anti-skid floor tiles.
- ◆ Designer tiles.
- ◆ Concealed plumbing with standard quality sanitary ware (wash Basin, Wall Mount Commode).
- ◆ Branded bath fitting with cold and hot water tap.
- ◆ RCC loft with water tank.

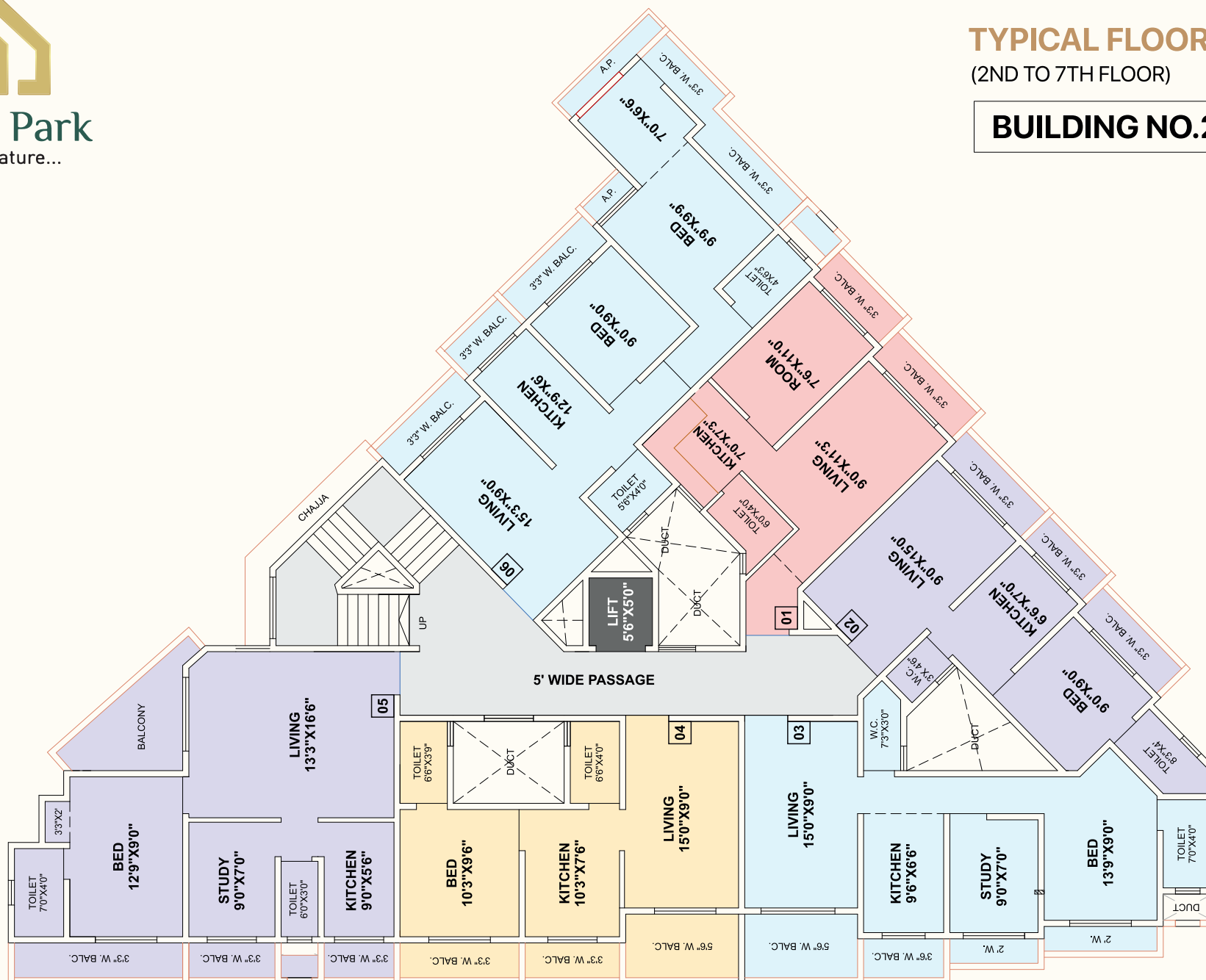
Common Amenities

- ◆ Wooden frames for main and bedroom doors and granite frames for toilet doors and all windows.
- ◆ Aluminum sliding window with mosquito net and Superior quality glass.
- ◆ Concealed electrical fitting using ISI mark copper wiring with modular switches.
- ◆ MCB distribution box for short- Circuit protection.
- ◆ Rooftop Garden with Kids Play Area & Senior Citizen Area.
- ◆ Provision for inverter.
- ◆ Premium quality gypsum punning on all walls.
- ◆ Standard Quality paint.
- ◆ Antiskid wooden finish tiles and MS railing for terrace.
- ◆ Decorative Entrance Lobby.
- ◆ Decorative Main Gate With Security Cabin.
- ◆ Generator Power Backup for Common Area.





BUILDING NO.2



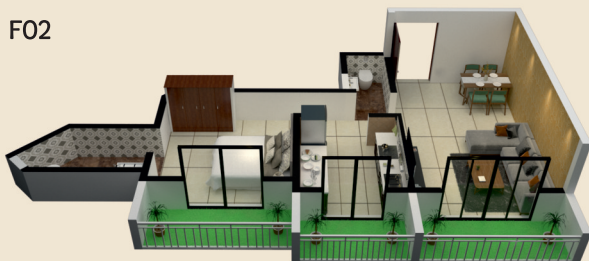
3D ISOMETRIC VIEW

1 BHK

F01



F02



F04



2 BHK

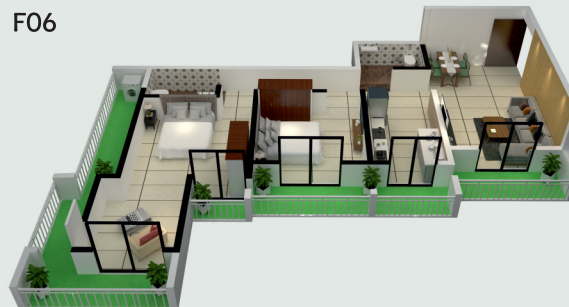
F03



F05



F06



NEARBY AMENITIES



RAILWAY STATION

- Virar Station - 7 Mins



HOSPITALS

- Shree Multispeciality Hospital - 5 Mins
- Prakriti Hospital - 5 Mins
- Primary Health Centre - 5 Mins
- Sankalp Hospital - 8 Mins
- Mahavir Hospital - 9 Mins
- Sanjivani Hospital - 12 Mins



SCHOOLS & COLLEGES

- Sri Chaitanya Techno School - 4 mins
- St. James English High School - 5 Mins
- Muljibhai Mehta International School - 5 Mins
- Sakshi Institute - 7 mins
- Viva College - 7 Mins
- NP Shah English School - 7 mins
- MGM High School & Jr. College - 7 Mins
- John XXIII CBSE School - 9 Mins
- Rustomjee Cambridge Int. School - 10 mins



HOTELS & RESTAURANT

- Hotel M.M. - 2 Mins
- Domino's Pizza - 9 Mins
- McDonald's - 9 Mins



SUPER MARKETS

- Vijay Sales - 7 Mins
- Reliance Digital - 7 Mins
- D Mart - 9 Mins



RELIGIOUS PLACES

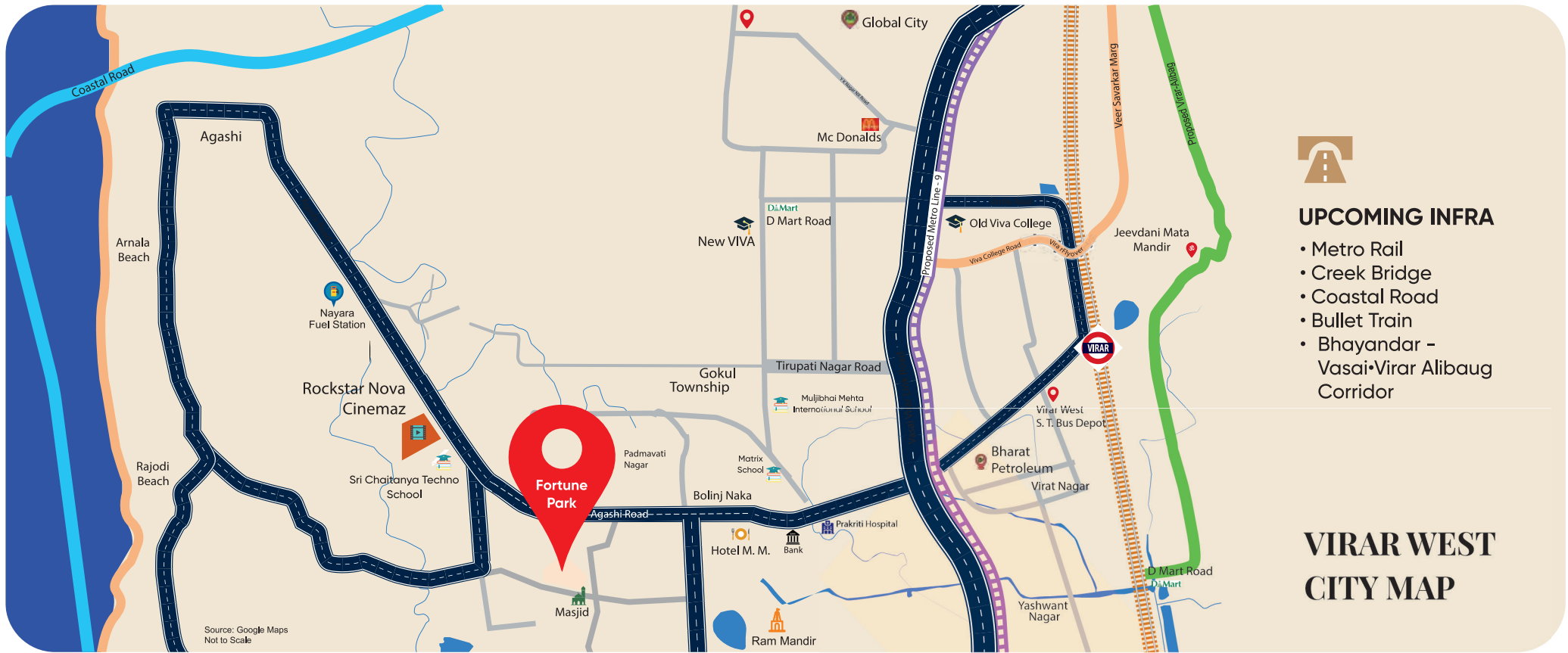
- Masjid - 2 Mins
- Ram Mandir - 3 Mins
- St. Mathews Church - 2 Mins



Fortune Park
live amidst nature...



Roof Top View



Project by

R.D.Developers

☎ **88288 19993 | 98192 44442**

✉ **suhanarealtors786@gmail.com**

Site Address : Fortune Park, Bldg. 2,
Haji Shaikh Mohammed Marg, Near Jama
Masjid, Bandarpada, Bolinj, Virar (W)-401303



MahaRERA Reg. no. : P99000056108

Liaison Architect – Sanjay Maloo & Associates | RCC Consultant : GR Consultants

Disclaimer : The plans, designs, dimensions and elevations are as per current sanctioned plans and approvals, specifications, amenities and facilities will be set out in the agreements for sale and images are artistic impressions and purely for representational purposes. The same may be subject to changes/revisions/alterations in terms of approvals, orders, directions and/or regulations of the concerned/relevant authorities, and/or for compliance with laws/regulations in force from time to time. In view of the above, and in line with our customer policies, we may change/alter the above in consonance with approvals, orders, directions, applicable laws, regulations, etc. Unless otherwise stated, all the images, visuals, materials and information contained herein are purely creative/artistic concepts and may not be actual representations of the product and/or any amenities. None of the above may be construed to form any basis of, or serve as an inducement or invitation for payment of any advance and/or deposit, to be made by a prospective customer, under relevant provisions of law or otherwise. Solely the amenities/ specifications, features mentioned in the agreement for sale (if any) shall be final. For more information refer to 'https://maharera.mahaonline.gov.in/'